

Hardt Auctions GmbH



Fine International Art Sale No. 18

Saturday - September 30, 2023

Fine International Art Sale No. 18



1: ELEPHANT

EUR 200 - 300

White Jade China , 19th century or earlier Dimensions: Height 4 cm Wide 2 cm Depth 8 cm Weight: 65 grams cut from white jade , with brown speckled fields, the back of the elephant with archaic line patters. The elephant symbolizes happiness, cheerfulness, wisdom, protector of fertility.



2: BHUDEVI / LAKSHMI

EUR 200 - 300

Bronze India, Nayak style 19th century Dimensions: Height 24 cm by 11 cm by 5 cm Weight: 1.700 grams A sculpture of the Hindu Goddess Bhudevi, an incarnation of Lakshmi. Bhudevi is wearing a conical crown. At the back of her head there is a chakra symbol. The slightly flexed body is dressed in a dhoti. The goddess is holding a lotus bud in her right hand. The statue is cast in one piece with a round base.



3: BUDAI (HOTEI)

EUR 200 - 300

Lapis lazuli, wood China Dimensions: Height 7 cm by 7 cm by 5.5 cm Weight: 440 grams A figurine of seated Budai depicted with elongated ears, a big belly and a sack in his right hand. This figure of Happy Buddha or Laughing Buddha is made of dark blue lapis lazuli stone with yellow pyrites. The sculpture is placed on a fitted wooden stand.



4: MOUNTAIN CARVING

EUR 200 - 300

Jade China Dimensions: Height 18 cm Wide 11 cm Depth 4 cm without base Weight: 1019 grams without base A white jade carving in the form of a rounded mountain with pine trees and houses done in deep relief. In the lower part there are two lovers standing on a bridge over a waterfall.



5: VAJRADHARA AND WHITE TARA

EUR 300 - 400

Bronze Nepal , 18th century possibly earlier Dimensions: Height 19,2 cm Wide 21,2 cm Depth 9,5 cm Weight: Purchased October 2019 from www.burmese-art.com , dated by burmese-art.com



6: TWO PAINTINGS DEPICTING LOTUS FLOWERS

EUR 300 - 500

Watercolour on Paper China 20th century Dimensions: Height 82 x 43 cm without frame , Frame size : 98 cm x 61 cm each Weight: 5,1 Kilograms both with frame two framed paintings depicting lotus flowers and leaves and Chinese characters and red seals, framed in handmade bamboo frames



7: YELLOW-GROUND FAMILIE ROSE YUHUCHUNPING VASE

EUR 2,000 - 3,000

Porcelain with Jiaqing Mark China 20th century The pear-shaped vase is well-enamelled around the bulbous body with four large stylized Indian lotus blooms each enclosing a Chinese character. A network of scrolling tendrils bearing other minor blooms, all reserved on a yellow-ground and upright lotus petals around the base. The interior and the base are enamelled turquoise.

Fine International Art Sale No. 18



8: CROWNED AND JEWELED BUDDHA

EUR 600 - 800

Bronze India, ancient kingdom of Kashmir, 9th century Dimensions: height 14 cm, width 9 cm, depth 7 cm Weight: 630 grams Seated in a yoga posture, Buddha wears a high three-part crown and fully articulated robe. His lowered hand bestowed blessings on the male donor, who kneels before him and offers an offering, probably a garland. The crown with flying ribbons shows the strong influence of Sasanian royal images on later Kashmiri art.



9: ROSE CANTON BOWL

EUR 100 - 150

Porcelain China, 19th century or earlier Dimensions: Height 5 cm Diameter 14 cm Weight: 239 grams Flower-shaped rose canton bowl with turquoise enameled flowers, flowers and butterflies, wear on the inner surface of the shell; a hair on the mouth.



10: BUDDHA

EUR 800 - 1,000

Bronze Thailand, 16th century Dimensions: Height 25 cm Width 15 cm Depth 13 cm Weight: 2225 grams Seated Buddha on double reverse lotus base with beaded rim with legs crossed, hands forming bhūmispharṣa mudra and dressed in simple robe draped over his left shoulder, the right arm and shoulder exposed. The round face is smiling gently, eyes downcast and the nose long, the urna very delicate on the forehead. The ears are slightly elongated, the ushniṣa rather large and covered in tiny dots as the head, cast in lost wax method



11: PLATE

EUR 100 - 150

Porcelain China, 18th century, Qianlong (1736 - 1795) Dimensions: Height 3 cm Diameter 23 cm Weight: 366 grams blue and white porcelain with floral motives



12: SET FROM A NOBLE TIBETAN

EUR 400 - 600

Iron Silver and brass with Stones Tibet, 18th century Weight: 518 grams These items were attached to the belt and were essential to survive on long journeys in the remote Himalayas and Tibetan plateau. The pouch is called meeche and holds the flint and cotton needed to make a fire as well as an iron striker to ignite it. The inner reserve is decorated with three flowers with large stone inlays surrounded by a beaded frame with ornamental sprays and flowers. The wallet has the shape of a shell with one large stone inlay as flower bud in the center, two silver flowers above it and one seemingly missing on the other side. The elongation of the wallet is almond-shaped with a large stone in the center, the face of a kirtimukha on the bottom. This set made of leather, brass, silver and various stone beads is a unique piece.



13: BUZI

EUR 1,000 - 1,200

Embroidery China, 19th century Dimensions: Width 23 cm Depth 24,5 cm Weight: 20 grams Made for a civil official of the ninth rank and worked in stitch and couched thread, the white, long-tailed bird (lanque) shown facing the sun as it stands on one leg atop a rock emerging from waves above a broad gold stripe, and surrounded by the bajixiang (Eight Buddhist Emblems) and the wufu amidst lingzhi-shaped clouds, within a border of flower scroll, all picked out in shades of blue, coral, white, green and yellow, and outlined in couched gold thread

Fine International Art Sale No. 18



14: HEAD OF BUDDHA

EUR 1,000 - 2,000

Bronze Mandalay , South East Asia , 18th century Dimensions: Height 28 cm Wide 16 cm Depth 18 cm without base Weight: 7942 grams with base Bronze head attached to metal base. Buddha head showing the Buddha in meditation and with features characteristic of the the enlightened being. The heart-shaped face has a friendly expression with smiling lips, downcast eyes and thin eyebrows. Earlobes are elongated. a headband on the forehead separates the tiny dots of the hair and ushnisha.



15: BUDDHA AMITHABA

EUR 2,000 - 3,000

Sandstone India, 12th century Dimensions: Height 49 cm Wide 39 cm Depth 9 cm Weight: 28 Kg Stone fragment of Buddha Amithaba seated on a lotus flower on a throne in an alcove held by pillars. He is flanked by two standing devotees and two seated Buddhas in meditation pose are hovering beside his head. The Buddha is holding the vessel containing the nectar of immortality. He is dressed in simple robes and is wearing a tiara. His eyes are closed in a meditative state. A makara face decorates the arche's top. At the very top of the stone fragment are three small alcoves with seated Buddhas in dhyanasana pose. Provenance: Collection Madeleine und Erich Dammann , 1950 -2012 The journey Newlyweds Madeleine and Erich Dammann took their first trip in 1950. Their travel route was determined by their great shared curiosity about foreign cultures, by climactic circumstances, and by the financial resources available to them. In 1963, they settled in Switzerland with the birth of their first child. Erich became an editor for Swiss television, and worked for the Rundschau known for their reports. His focus: exciting reports from around the world That made it possible for him to travel to the most remote corners of the world, and to bring back and collect art and other objects from these places. His wife Madeleine regularly accompanied him. For more than 50 years, the couple pursued their shared passion and went exploring together " on a journey through many cultures. The collection The collection developed completely situationally. It was influenced by the couple's great fascination for life in other cultures. This is how the collection came to include everyday objects, furniture, weapons, masks, musical instruments, and jewelry, as well as representations of revered figures, minerals, and many other interesting items. Madeleine and Erich Dammann visited countries more as observant "guests" than as tourists, living in the respective cultures and becoming a part of them. Together with their three children, Madeleine and Erich lived with and in their collection, which influenced the family's home visually and atmospherically.



16: ARCHAIC WINE JAR , FANGHU

EUR 1,500 - 1,800

Bronze China Warring states period , 5th to 4th century BCE Dimensions: Height 17 cm Wide 10 cm Depth 9 cm Weight: 496 grams The four-sided fanghu is set with loose rings suspending loose ring handles on opposite sides. The bronze has a brownish-red and green patina. TL Test , confirms the age of 3700 year , +/- 18,7%



17: VERY LARGE NARASHIMA WITH CONSORT SCULPTURE

EUR 3,000 - 4,000

Bronze India , 19th century Dimension: Height 55 cm Width 35 cm Depth 28 cm Weight: 34 Kg The Destroyer of Evil and Fear seated with one leg pendant, the other leg drawn to his thigh, on a lotus flower on a square base with expansive foot incised with lotus petals. Narasimha has four arms, one is wrapped around the hip of his consort sitting on his left knee. Both are dressed in long, striped dhotis and wearing anklets, armllets and bracelets. Their bodies are adorned with jewellery and chains. With one hand Narasimha is gesturing the abhaya mudra, with the other two he is holding the sudarshana chakra and shankha, while his consort a closed lotus flower. Narasimha has a prominent nose, fangs as teeth and bulging eyes. Both are wearing patterned, conical headdresses with domed top and lotus bud finial. The back of the statue is created with the same detail except for Narasimha's ritual weapons which have a flat background.



18: TWO SMALL SQUARE PLATES

EUR 500 - 700

Canton-enamele China 19th century with seal Dimensions: Height 1,5 cm Width 10 cm Depth 10 cm Weight: 88 grams each Dishes in square shape with rounded corners. Each plate's rim in gold colour, followed by a band with ornamental sprays. The wells of the plates are both painted with reserves framed by a red line. One reserve shows a scene at a garden in front of a building and trees with rocks in the garden. A man is sitting on a chair or throne made of natural rock, dressed in elegant robes, another person, eighth companion or servant standing next to him. They are both looking at a kneeling servant delivering a red letter or parcel. The second plate shows another scene in the court garden, The same person standing from the other scene is here shown standing on the steps to the pavillion, holding a fan in one hand while pointing towards the pavilions inside with the other. He is talking to an older man in a wide, purple robe with black hat, who is holding a folding fan. The bottom of the dishes show a mark in red.

Fine International Art Sale No. 18



19: SHIVA AND PARVATI DANCING

EUR 400 - 600

Bronze India 16th century Dimensions: Height 15 cm Width 8 cm Depth 5 cm Weight: 768 grams Bronze statue of Shiva and Parvati dancing on a small round base attached to square base. Parvati has two arms, with her right hand she is holding a large trident and her left hand is holding one of Shiva's hands embracing her chest. Shiva has four arms and he is holding the battle axe in one, while embracing his wife with two other hands. One hand is raised and forming a mudra. They both seem enchanted in a harmonious dance, smiling and moving elegantly.



20: EAR CUP WITH FLOWERS AND BIRDS

EUR 600 - 800

Silver China , Tang Dynasty Style Dimensions: Height 4 cm Width 13 cm Depth 13 cm Weight: 322 grams Low ear cup with floral design inside, the outside body decorated with grooved shapes of flowers and tendrils, birds and leaves.



21: YOUNG NANDI

EUR 100 - 200

Bronze India , 16th century Dimensions: Height 4 cm Wide 2,5 cm Depth 1,5 cm Weight: 22 grams Statue of a young bull on a double reverse lotus flower base, standing proudly with one foreleg resting on a small stone, the gaze looking up to the horizon. The bull is draped with a saddle fastened around the chest, one horn is missing.



22: GROUP OF SIX INROS

EUR 450 - 600

wood and Lacquer Japan Meiji Period (1868 - 1912) Dimensions: Height 5 cm to 7 cm Weight: 283 grams Collection of six inro, a case for storing small objects and suspended from the sash when wearing a kimono. The stack of boxes is held together by a cord that is laced down one side, under the bottom, and up the opposite side. The ends of the cord are secured to a netsuke, a kind of toggle that is passed between the sash and pants and then hooked over the top of the sash to suspend the inro. An ojime bead is provided on the cords between the inro and netsuke to hold the boxes together. This bead is slid down the two suspension cords to the top of the inro to hold the stack together while the inro is worn, and slid up to the netsuke when the boxes need to be unstacked to access their contents, which were usually medicine.



23: JUN KILN TEA CUP

EUR 1,200 - 1,500

Pottery glazed China , 10th to 13th century Dimensions: Height 4,5 cm Diameter 9 cm Weight: 123 grams Beautiful tea cup in purple glaze. Jun Kiln is one of the five famous kilns in Song Dynasty, which has always been called "national treasure". This Jun kiln tea cup has rose purple color from the inside to the outside.



24: FRAMED MEDICINE THANGKA

EUR 400 - 600

Distemper on cloth Tibet 19th century Dimensions: 35 cm by 35 cm without frame Weight: 180 grams Rare Medicine thangka with the wheel of life in the center topped by Vajrapani and Amithaba, at the bottom two richly inscribed Yantras. Front and backside richly inscribed , lost of colour due to age.



25: VAISHRAVANA | JAMBHALA

EUR 3,600 - 5,000

Bronze gilt with turquoises ans semi precious stones Tibet , 19th century Dimensions: Height 26 cm Width 20 cm Depth 13 cm Weight: 3654 grams This glorious, richly patterned sculpture depicts Vaishravana, guardian (lokapala) of the north and bestower of wealth. This ancient Indian god assumed many iconographical forms that incorporated elements from various local traditions, since he was worshiped in India, China, and Central Asia before becoming popular in Tibet. Dressed in the garb of a mythic warrior-king, Vaishravana wears heavy, highly ornamental armor with lion heads acting as lappets; the sleeves of his upper garment flutter as though moved by the wind, revealing armor-covered lower arms. He holds a victory banner (dhvaja) and, tucked under his left arm, a mongoose spitting gems. Vaishravana's long dark tresses wrap around his upper ears and then fall onto his shoulders and upper torso. Kubera, the god of wealth and the regent of North is also known as Vaishravana and Jambhala. According to Hindu mythology Kubera was the son of a sage called Vishravas, hence his he is also called Vaishravana or Vishravana. He is also the god of wealth and guardian of North in Brahmanical Pantheon. Kubera has both Yi-dam and Dharmapala forms of great antiquity in India and Nepal. As Yi-dam he is called Jambhala, probably from the jambhara (citron or lemon) this form always carries in his right hand. In

Fine International Art Sale No. 18

Tibet Kubera or Vaishravana has been one of the primary protectors of the Gelugpa sect since the fourteenth century. He has two main aspects, that of a warrior protector and that of deity of wealth. As a guardian of the North he is called Vaishravana by Buddhists, and his abode is Alaka in the Himalayas, abounding in wealth and magnificence, where he is attended by Yakshas and horse-headed men called kinnaras. It is believed that performing prosperity rituals to Kubera or Jambhala will increase wealth and prosperity. There is a special ceremony in Tibet for imploring Kubera for riches, which is called Yanyung. Kubera or Vaishravana or Jambhala is popular in Tibet, Mongolia, China, Nepal and Japan where he is known as Bishamon.



26: AMITABHA

EUR 500 - 700

Bronze China , 18th century Qing Dynasty Dimensions: Height 16 cm Wide 10 cm Depth 7 cm Weight: 826 grams Buddha Amithaba seated on double reverse lotus base with beaded rim, legs crossed and hands forming the dhyana mudra. Dressed in flowy robes, a thin shawl wrapped around the elbows, jewellery decorating the body. The broad face has fleshy lips and a chubby nose, the eyes are downcast with arched eyebrows. The elongated earlobes are adorned with floral pendants. A five-pointed tiara encloses the fine hair done up in a two-tiered chignon. The statue is hollow.



27: THREE TANTRIC GODDESSES , VAJRAPANI - KURUKULLA - HAYAGRIVA

EUR 1,200 - 1,500

Wood painted Tibet , 18th century Dimensions: approx. Height 35 cm Wide 23 cm each without base Weight: approx. 7 Kg all three Three wooden statues of wrathful tantric goddesses, each standing on a lotus flower backed by a red, fiery aureole. One has black skin and is standing in wide stance, one hand lifted holding a vajra, the other holding a ghanta. The center statue depicts a four-armed deity of red skin, holding a kapala and kartika while trampling on a prostrate figure. The third statue shows Hayagriva, a wrathful deity in wide stance wearing tiger skin, holding a mace up high and another weapon or ritual object, black wings spreading from the back. A small horse head emerges from his head.



28: LARGE STANDING BUDDHA

EUR 1,000 - 1,500

Bronze gilt Thailand , about 1900 in Ayutthya Style but later Dimensions: Height 156 cm Wide 45 cm Weight: approx. 29 Kilograms The Buddha stands upright and holds an alms bowl with both arms. This posture is said to recall the first morning in Kapilavastu after visiting his father's palace. Early in the morning the Buddha made his rounds through the city to receive food from his father's subjects, although his own relatives had made all preparations to receive him at the Nigrodarama. However, they had neglected to ask him the night before if he wanted to have breakfast with them. Traditionally, this statue is associated with people born on a Wednesday morning.



29: FENG ZI KAI (1898 - 1975)

EUR 200 - 400

Colour on paper China , 20th century Dimensions: 45 cm x 38 cm Ants Moving Home Feng Zikai's paintings are full of childishness and compassion. This painting, ANTS MOVING HOME, aims to teach children to cherish and protect the lives of small animals. The ants in the corner are moving home in a long line, and a child moves a lot of small stools together to set up the "corridor" to prevent the ants from being trampled to death. By children's protection to the weak life, the painter expresses his expectation to people that to be compassionate.



30: MURANO VASE IN THE STYLE OF PICASSO

EUR 250 - 350

Murano Glas with Vetro Artistico Murano Label Dimensions: Height 32 cm Wide 24 cm Depth 12 cm Weight: 4559 grams Italian hand blown Glass Sculpture, in the style of Picasso made in Murano, Italy



31: BUMPA TIBETAN RITUAL VASE

EUR 800 - 1,000

Copper repousse with gilding Tibet , 16th century Dimensions: Height 17 cm Wide 10 cm Depth 13 cm Weight: 410 grams Ritual vase with foot created like a lotus flower, the body has a smooth surface with some indents, the spout extending from the head of a makara, the lid decorated with ornamental sprays and endless knots.

Fine International Art Sale No. 18



32: LUCKY BUDDHA

EUR 200 - 400

Clay or stone with gilding China , 19th century Dimensions: Height 15 cm by 18 cm Weight: 1692 grams Also known as Happy Buddha or Laughing Buddha or Budai in Chinese. He was a Chinese monk used to wander around carrying a large sack symbolizing abundance. He is usually depicted seated or lying comfortably, dressed in a wide robe with his large belly and chest exposed, sometimes accompanied by children. The statue is closed at the bottom.



33: VAJRAPANI

EUR 300 - 500

Bronze Tibet , 19th century Dimension: Height 25 cm Width 16 cm Depth 8 cm Weight: 2074 grams Here depicted in human form kneeling on his right leg and foot lifted, the left leg in a lunging position. With one hand raised holding the ghanta or bell while the other arm placed at the hip grasping a vajra or thunderbolt. He is standing on a double reverse lotus base, wearing trousers and anklets, a belt and shirt with beaded necklaces and belts, armlets and bracelets. His head is gazing towards his raised hand. The bearded face with moustache and small goaty is smiling slightly with attentive eyes, the curls of hair peaking out underneath a five-pointed tiara encircling the high chignon. Looking at the back we see a rectangular opening of the statue, the bottom reveals two small holes.



34: FU BAO SHI (1904-1965) 傅抱石 "WATCHING THE WATERFALL"

EUR 1,500 - 1,800

Paper China , 20th century Dimensions with frame: 88 x 47 cm Painting: 74 x 37 cm Two scholars, one with a glass and one with a bottle, kneel down to admire the waterfall. Although they do not speak, they express their worship for the natural world. This work by Fu Bao shi came from a Taiwanese collector. The collector bought it from Shanghai temple in 1966, the picture was damaged already, and almost all the inscriptions and postscripts on the right side were burned down. The collector restored the painting in 2006. In order to meet the needs of the auction, this painting is specially remounted.



35: JOSE YÁÑEZ-ARTEAGA (1898 - 1961)

EUR 1,500 - 2,000

Öl auf Leinwand "Flußlandschaft in Ecuador" Größe: 38 cm x 54 cm Signiert: rechts unten Literatur: Thieme-Becker



36: STANDING VARAHI

EUR 300 - 400

Bronze India , 18th century Dimensions: Height 13 cm Wide 6 cm Depth 5 cm Weight: 437 grams Varahi is the feminine energy of Varaha, the boar avatar of Vishnu and typically depicted with a sow head on a female human body, here with six arms. She is dressed in a striped dhoti, her pot-belly is protruding over the belt. Two hands are forming the varada and abhaya mudra, four hands are holding the danda or staff of punishment, khetaka or shield, khadga or sword and pasha or noose. She is wearing a conical crown called karanda mukuta. Varahi is one of the seven Mother Goddesses and associated with darkness and night.



37: GARUDA HEAD

EUR 400 - 600

Bronze with Silver and Copper India , 18th century Dimensions: Height 32 cm Wide 20 cm Depth 18 cm without base Weight: 5860 grams with base Garuda is Vishnu's mount and often pictured as a human body with a bird's head and wings, therefore he is also known as King of Birds and Kites. This mask shows a human face with a beak-like nose, huge eyes with a piercing gaze, a curled moustache and prominent bushy eyebrows. The ears are pierced with small pendants. The hair is done up in a high bun encircled in a two-stepped tiara decorated with flowers.

Fine International Art Sale No. 18



38: CHAKRASAMVARA PAINTING

EUR 500 - 800

Tibet , 18th century Dimensions Painting: 32 x 26 cm Buddha Shamvara, also called Chakrasamvara, belongs to the Anuttarayoga Tantra series. The Buddha has a blue body, wearing a crown on the head. Each foot is stamping on a four-armed male or female. The Buddha crosses the arms in front of the chest, holding a bell and a vajra. Other arms stretch to the sides, each holding a ritual implement.



39: VASE

EUR 900 - 1,100

Red glazed Porcelain China , Dao Guang period Dimensions: Height 25 cm Wide 18 cm Depth 18 cm Weight: 1553 grams Exquisite vase in red glaze in the shape of bailuzun or "hundred deer" vase. The base shows the Dao Guang mark.



40: SHIVA , PARVATI AND SKANDA

EUR 600 - 800

Bronze India , 18th century Dimensions: Height 21 cm Wide 19 cm Depth 8 cm Weight: 1863 grams Rectangular throne with three bases, two larger circular one on the side and one smaller in the center. Shiva is seated with one leg pendant, dressed in short dhoti with decorative brim and pattern, his four arms holding a deer, a shell and showing mudras. The body is adorned with jewellery and chains, the hair is done up in a high chignon encircled by headbands and jewellery. Parvati is seated also with one leg pendant, dressed in a striped long dhoti, the torso and arms covered with jewellery and beaded chains. She is forming two mudras, she is wearing a high conical headdress with decorative pattern. In the center stands Skanda in youthful form, their son, only wearing a belt and necklace, holding two lotus flowers in his hands, his hair done up in a bun. The family is framed by an aureole with a kirtimukha at the top. The backside of the deities' is created with same detail as the front, the aureole is flat.



41: BUDDHA MAITREYA

EUR 600 - 800

Bronze Swat Valley , 10th century or later Dimensions: Height 12 cm Wide 7 cm Depth 5 cm Weight: 291 grams Buddha of the Future seated on drum-shaped lotus flower with beaded rim with legs crossed and dressed in a striped, long dhoti. The sacred thread runs along the naked upper body decorated with jewellery. The right hand is raised with palm facing the front, abhaya mudra, the left hand is holding a small flask containing the elixir of life or amrita. The face is smiling with a raised urna on the forehead, a tiara with floral spikes on the head, the elongated earlobes are adorned with large floral ear pendants. A metal noose on the back of the statue.



42: SRI DEVI

EUR 300 - 400

Bronze India , 18th century Dimensions: Height 11 cm Wide 4 cm Depth 3 cm Weight: 110 grams Shown in her usual position on the right of Vishnu. She holds in her left hand a lotus stem with the lotus flower, and has a horizontal breast band (kucha-bandha). She is dressed in a striped dhoti, a belt with tassel hanging down in front of her thighs. Her right arm is hanging down at the side of her body gracefully. Her head is adorned with a high conical headdress encircling her done up hair.



43: WOOD BOX

EUR 400 - 600

light wood Japan 19th century Dimensions: Height 10 cm Width 5 cm Depth 2 cm Weight: 69 grams Delicate container made of several stacked parts usually held together by a string running through a hole in the side of each boxes. The whole piece is decorated with a geometrical pattern with a reserve on each side showing birds. One side shows a bird of prey sitting on a branch and the other side shows two cranes standing underneath a pine tree.

Fine International Art Sale No. 18



44: CLOISONNE BOWL

EUR 1,500 - 2,000

Cloisonne China , 19th century with mark Dimensions: Height 11 cm Wide 22 cm Depth 22 cm Weight: 1162 grams Cloisonne bowl with gold gilden lip. The outside of the bowl is decorated with ornamental, gold clouds on blue as main background interrupted by mystical creatures in different colours, showing similarity to a lion or bull. The well of the bowl is decorated with a circular reserve showing a red mystical animal. The mark is on the bottom.



45: PORCELAIN BOWL

EUR 400 - 600

Porcelain with mark China , 19th century Dimensions: Height 22 cm Width 22 cm Depth 22 cm Weight: 1925 grams Round bowl with lid and small handles on the upper part of the body. The bowl is decorated with a garden scenery and some architectural structures, patches of grass, trees, rocks and flowers. Children are playing with toys, an aristocratic man is standing among them holding his hat. A young lady is seated on the steps, holding a baby. The lid is also decorated with frolicking children in play, a knob in the shape of a small lion, which has lost part of its golden colour. The lip of the lid is decorated with gold gilding and painted floral sprays.



46: UTAGAWA KUNISADA (1786 - 1864) TRIPTYCH

EUR 100 - 200

Woodprint Japan 19th century Dimensions: 35 cm x 24 cm each



47: CROWN LEAF DEPICTING BUDDHIST SCULPTURES

EUR 400 - 600

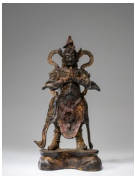
Bronze with turquoises Nepal or Tibet Dimensions: Height 7 cm Wide 6 cm Depth 3 cm Weight: 90 grams Bronze leaf depicting a standing Goddess with two sidefigures on a Lotus base



48: ERICH HASENCLEVER (1886 - 1967) EHRINGHAUSER SOMMER

EUR 200 - 300

Bleistiftzeichnung signiert: unten rechts , E. Hasenclever - Burg? unten links: "Ehringhauser Sommer" Original Maßße: 57 cm x 37 cm



49: WEI TUO VEDA STATUE

EUR 600 - 800

Bronze China , Ming Dynasty Dimensions: Height 27 cm Wide 13 cm Depth 8 cm Weight: 1285 grams Wei Tuo Bodhisattva, also known as Skanda, is the Divine Protector of Chinese Buddhism, usually shown in majestic general armor. Here he is standing solidly on a rock, his hands joined together in front of his chest in serving gesture with a smiling face. His armor is intricately designed with patterned details, bands of cloth billowing around his head. The statue is hollow.



50: BUDDHA

EUR 3,000 - 4,000

Bronze gilt China , 19th century Dimensions: Height 38 cm Wide 26 cm Depth 16 cm Weight: 8955 grams A Sino-Tibetan Bronze Buddha seated on double reverse lotus base with beaded rim. Dressed in a simply, wavy robe with ornamental brim covering the shoulders, his right arm is exposed. He is gesturing the bhumispharsa mudra, one hand resting on the knee with fingers almost touching the earth, the other hand hovering above his lap with palm facing upwards. The gaze is calm and friendly with fleshy lips, long nose and distinctive eyelids. A raised urna between the arched eyebrows. Elongated earlobes frame the face. Black, tiny curls cover the head and ushnisha which is topped by a diamond.

Fine International Art Sale No. 18



51: VASE

EUR 700 - 900

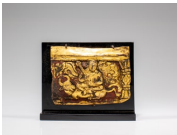
Blue glazed Porcelain China , Yong Zhen Mark Dimensions: Height 21 cm Wide 14 cm Depth 14 cm Weight: 720 grams Pear-shaped vase in pigeon blue colour with winded handles on the side of the long neck.



52: CENSER

EUR 300 - 500

Bronze China , 18th century Dimension: Height 7 cm Width 13 cm Depth 12 cm Weight: 506 grams Censer in shape of a low pot with circular foot with rounded key fret decoration. Two small handles on both sides, a band with smaller rounded key fret decoration as background and mystical birds facing each other. There's a mark on the bottom.



53: YAMA ON BULL

EUR 400 - 600

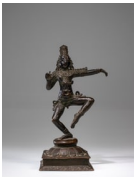
Copper repousse gilt Nepal , 16th century Dimensions: Height 7 cm Wide 9 cm Depth 1 cm Weight: 157 grams with base This repousse could be depicting Bhairava or Yama, holding a club and showing a mudra while sitting on a prostrate bull. He is surrounded by ornamental shapes with a vajra-shaped pillar to his left. The repousse is attached to a stand.



54: SILVER TEACUP

EUR 150 - 200

Dimensions: Height 14 cm Width 11 cm Depth 11 cm Weight: 193 grams The silver teacup and lid with various Tibetan floral motifs and Chinese auspicious signs, teacup consisting of a cup with foot and flared lip with no decoration. The lid is made of three tiers, the lower two with incised and relief decoration of flowers and ornamental patterns. The top tier is shaped like a reverse flower with a red bud finial. The bud finial bents slightly to one side. The red bead stained. Minor scratches and abrasions consistent with age. Overall good condition.



55: DANCING KRISHNA

EUR 600 - 800

Bronze India , 17th / 18th century Dimensions: Height 27 cm Wide 14 cm Depth 10 cm Weight: 2008 grams Krishna standing on a lotus flower on a square platform. He is balancing on his right leg, the left knee is bent and the foot hovering in mid-air. His right hand is raised in front of his body gesturing a mudra, the left arm stretched out to his left side. He is dressed in a loincloth, the whole body adorned with beaded belts and jewellery. His face is smiling, an elaborate high conical headdress on his head.



56: NARASIMHA

EUR 300 - 500

Bronze India , 15th century Dimensions: Height 13 cm Wide 12 cm Depth 7 cm Weight: 1870 grams Seated Narasimha, god of protection, destruction and yoga with legs crossed, dressed in a long dhoti. He has four arms, two raised in the air holding Vishnu's attributes, the dharma chakra and shanka, as he is one of his avatars. The other two arms are placed on an asura lying on his lap, he is disembowling the asura. The deity has large, bulging eyes, the tongue is sticking out. He is wearing a high, winged crown.



57: ADOLPH DIEDRICH KINDERMANN (1823 - 1892)

EUR 2,200 - 3,000

Äl auf Leinwand Signiert unten links Größe: 48 cm x 38 cm Literatur: Thieme-Becker Motiv: Lesende Dame

Fine International Art Sale No. 18



58: YE QIAN YU (1907 - 1995)

EUR 200 - 400

Watercolour on paper China , 20th century Dimensions: 47 cm x 36 cm Stem-shaped drum. Ye Qian yu has three wonders "cartoon, dance painting and sketch". Among these three, he is well known for dance painting. This painting "stem-shaped drum" was painted in 1981, depicting a folk instrument of Dai nationality, stem-shaped drum. In the painting, a young male Dai nationality dressed in ethnic costume and carrying a traditional drum, is dancing merrily. By standing on one foot and beating drums rhythmically with his hands, the dancer shows us a vivid glimpse of ethnic life. This is the typical feature of Ye Qian yu's works, "full of ethnic flavor".



59: SURYA WITH CONSORTS

EUR 800 - 1,000

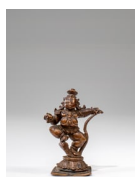
Lime Stone Nepal , 15th century Dimensions: Height 26 cm Wide 19 cm Depth 7 cm without base Weight: 4424 grams with base Female Surya accompanied by three consorts and an animal with missing head. The group is standing on a base with beaded rim, Surya is dressed in a striped dhoti, her arms are hanging down to her side. Her hair is done up in an elaborate style, large ear pendants hang from her ears. An aureole surrounding her is missing. The goddess is smiling, as are her consorts.



60: SCHOLAR - IV DONG BIN

EUR 1,000 - 1,200

Bronze China , Ming Dynasty (1368 - 1644) Dimensions: Height 28 cm Width 20 cm Depth 13 cm Weight: 4306 grams Lu Dong Bin is a scholar and poet living in the Tang Dynasty and he was elevated to the status of an immortal by Daoists and also known to belong to the group of deities known as the Eight Immortals. Here he is presented sitting casually on a pillow dressed in robes with a long goat beard and wearing a headdress. The statue is hollow.



61: DANCING KRISHNA

EUR 400 - 600

Bronze India , 18th century Dimensions: Height 7 cm Wide 5 cm Depth 3 cm Weight: 108 grams The child god stands on his left leg. His right leg is bent over the head of a snake whose tail he holds with his left hand. His right hand holds a lump of butter. He wears a belt with pendants, a tiara, necklaces and bracelets.



62: GOBLET

EUR 900 - 1,100

Blue and White Porcelain with dragon China , Ming Dynasty Dimensions: Height 10 cm Wide 15,5 cm Depth 15,5 cm Weight: 210 grams Blue and white underglazed goblet with floral tendrils and sprays pattern all over, the highlight being a mystical dragon extending its body over the goblet's body.



63: GUANYIN CANDLE HOLDER

EUR 300 - 500

Celadon China , 14th century Dimension: Height 24 cm Width 12 cm Depth 8 cm Weight: 883 grams Bodhisattva Guanyin seated on a lotus flower on top of hexagonal roof of small lantern with decorative holes. Guanyin is wrapped in flowy robes covering the whole body, her head bowing towards the ground.



64: TAOIST GOD ZHANG DAOLING

EUR 400 - 600

Bronze Northern China , Wanli period (1573 - 1620) Dimensions: Height 9 cm Wide 7 cm Depth 4 cm Weight: 229 grams Sitting on a tiger , with serene smile. Zhang Daoling (34-156CE), or Zhang Ling ¼ é™µ of Sichuan province, is generally recognised as the founder of Daoism as a religion. He claimed Laozi appeared before him to reveal the Daodejing in 142 CE. Thereafter, he established the first Daoist sect, known as Wudoumi Dao (ä"æ—ç±³é", literally "Five Pecks of Rice Dao"™.) He hailed himself "Celestial Master" (Tianshi ä"â,") , claiming indirectly to be an earthly counterpart of Laozi himself. Zhang's appeal laid in his exorcist powers and use of talismans to cure sickness.

Fine International Art Sale No. 18



65: Skulptur von "Friedrich der Große"

EUR 800 - 1,000

Bronze auf Marmorsockel Maße: Höhe 46 cm Breite 35 cm Tiefe 15 cm Gewicht: 19,2 Kg Dieses Denkmal stellt eine der bedeutendsten Skulpturen des 19. Jahrhunderts dar, dessen Grundsteinlegung im Jahr 1840 erfolgte. Das Original dieses monumentalen Reiterstandbildes befindet sich im historischen Stadtzentrum Berlins "Unter den Linden", künstlerisch des Brandenburger Tor und wird von den Berlinern liebevoll "der alte Fritz" genannt. in faszinierender Formvollendung gefertigt und von meisterhafter Handwerkskunst



66: CENSER WITH PHOENIX

EUR 300 - 500

Bronze China , Qing Dynasty Dimensions: Height 17 cm Wide 14 cm Depth 11 cm Weight: 842 grams Bronze censer with handles in the shape of makara heads, the foot decorated with band of repetitive pattern. The top of the censer is decorated with a band with ornamental background highlighted with abstract shapes of birds. The bottom shows a mark.



67: MANDORLA

EUR 600 - 800

Bronze gilt Nepal , 18th century Dimensions: Height 35 cm Wide 24 cm Depth 7 cm Weight: 3569 grams Mandorla of elaborate open-work with various figures and ornaments. The main body is created by a gate carrying the circular mandorla, altogether surrounded by a dynamic composition of mystical creatures, deities and symbols. The gate has ornamental incisions, the mandorla on the top is flanked by lying lotus flowers. Next to the pillars of the gate starting from the bottom is a flower, a flying angel-like torso, followed by a ball of flames, topped by a warrior on a horse-like creature swinging a club or sword above his head. On top of the gate is a makara with open mouth, the tail embracing a ball of flames. The winding, scaled body of a snake or dragon follows, leading to the center of the mandorla. Two torsos extend from there, the three-headed hood covering each devotee who are holding one hand up high with the wheel of dharma. On top of them stands Garuda with the feet and wings of a bird, the torso and head of a man, his arms spread wide and his head backed by a flaming mandorla. The mandorla is attached to a plinth, the back shows heavy patina. This was most likely the mandorla for the Hindu god Vishnu.



68: TWO BIRDS

EUR 300 - 400

Bronze China 12th century Dimensions: Height 10 cm Wide 7 cm Depth 1,5 cm each without base Weight: 239 grams both with base two birds mounted on acryl base, both with greenish underground patina.



69: BUZI

EUR 600 - 800

Embroidery China , 19th century Dimensions: Height 20 cm Width 22,5 cm Weight: 19,7 grams Made for a civil official of the ninth rank and worked in stitch and couched thread, the white, long-tailed bird (lanque) shown facing the sun as it stands on one leg atop a rock emerging from waves above a broad gold stripe, and surrounded by the bajixiang (Eight Buddhist Emblems) and the wufu amidst lingzhi-shaped clouds, within a border of flower scroll, all picked out in shades of blue, coral, white, green and yellow, and outlined in couched thread



70: VINE VESSEL

EUR 500 - 700

Bronze Nepal 17th century Dimensions: Height 27 cm Width 13 cm Depth 13 cm Weight: 1042 grams Pear-shaped vase. The neck takes shape of a ghanta bell, the longer neck extending from a lotus flower and ending with a flaring lip. The foot is decorated with beaded rim.

Fine International Art Sale No. 18



71: SEATED BUDDHA

EUR 400 - 600

Bronze China 20th century or earlier Dimensions: Height 24 cm Width 14 cm Depth 10 cm Weight: 1161 grams This statue was cast in two parts. Bronze statue of a seated Buddha in juvenile appearance on a large, flaring lotus flower, whose stem is growing from a hexagonal stand with six feet, two small lotus flowers extending from the sides. The Buddha is seated cross legged, wavy robes covering his body, his barefoot soles showing. His right hand is placed in front of his belly holding a small vessel, the left hand is raised gesturing a mudra. The broad face is calm with small, smiling lips, slender nose and downcast eyes. He is wearing a crown with a small Buddha effigy in the center.



72: BOWL

EUR 100 - 200

Bowl with flared petal-shaped lip bearing two alternating symbols resembling a heart and a star. The outside painting shows a hunting scene with one man and one rider and several animals running across patches of grass, some architectural structures in the background. The bottom shows a mark with year of production.



73: PADMAPANI LOKESHVARA

EUR 1,200 - 1,500

Bronze with Silver eyes Kashmir , 12th century Dimensions: Height 19 cm Wide 12 cm Depth 6 cm Weight: 949 grams Bodhisattva Lokeshvara seated on a lotus petal throne with legs crossed, dressed in a pleated robe. The upper body is adorned with jewellery and strings. A thin scarf is wrapped around the shoulders. One hand is showing the varada mudra, gesture of offering, welcome and charity. The other hand is holding the stem of a flower while touching thumb and index finger. The long wavy hair is flowing down his shoulders, topped by a crown. Large, circular pendants hang from the ears. The downcast eyes are decorated with silver inlay. The statue is hollow.



74: THREE DZI BEADS

EUR 100 - 200

Agate Size and Weight: 1) 2,4 x 1,4 cm - 7,4 grams 2) 4,4 x 2,8 cm - 17,6 grams 3) 5,6 x 1,3 cm - 16,2 grams Three dzi beads of various shapes and sizes with different ornamental patterns.



75: HUANG BIN HONG (1865-1955)

EUR 200 - 400

Paper China Dimensions with frame: 205 x 44 cm Painting: 110 x 34 cm Huang Bin hong is a prolific painter. Besides excelling at landscape painting, his paintings of flowers and plants are also unique. In this picture the flowers are in full bloom or budding lively, the thorns are clearly visible.



76: JAMBHALA , GOD OF WEALTH

EUR 300 - 500

Bronze China , 19th century Dimensions: Height 21 cm Wide 17 cm Depth 12 cm Weight: 1366 grams Jambhala seated on lotus flower with beaded rim and extending smaller flower to the front supporting one foot of the deity. Dressed in garment with intricate pattern fastened around the waist, belly protruding and chest and upper body adorned with extensive jewellery. In his right hand he is holding a citrus fruit, symbol of wealth and fertility. The other hand is holding his jewel-spitting mongoose Nehulay. A small pile of jewels is resting in front of his left leg. Jambhala's face is smiling with bulging eyes and a curly beard is covering his chin. His crown is made of conches, a scarf is billowing around him. An inscription is written on the back of the lotus throne. The statue is hollow.

Fine International Art Sale No. 18



77: DRAGON SEAL | FROM HUANG SHI LING (1849 -1902)

EUR 500 - 700

Shoushan stone seal China , late Qing Dynasty (1645-1911) Dimensions: Height 6,5 cm Width 3,9 cm Depth 4,7 cm Weight: 220 grams Seal of strong amber colour with carving of a dragon with long body flying on clouds.



78: CHAMUNDRA

EUR 1,200 - 1,500

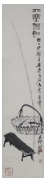
Bronze sculpture on repousse Lotus Nepal , 18th century Dimensions: Height 40 cm Wide 40 cm Depth 12 cm Weight: 2352 grams Large copper repousse of a flower petal surrounded by ornamental sprays. The center of the flower is decorated with a bronze depiction of Chamundra standing in side lunge, dressed in decorative garment, a scarf running down between her arms. The deity has four arms, holding a sword in one raised hand, a skull cup and another object while one hand is forming a mudra. Her face has a skeletal shape, she is wearing a tiara.



79: ADOLF RHEINERT (1880 - 1958)

EUR 200 - 400

Ä-I auf Leinwand Rechts unten signiert GrÄ¶Äÿe: 60 cm x 81 cm Literatur: BÄ©nÄ©zit Motiv: Hafen



80: QI BAI SHI (1864 - 1957)

EUR 300 - 500

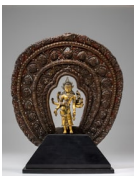
Ink on paper China , 19th to 20th century Dimensions: 210 cm x 47 cm ä...¶ä'ä½•ä!, Qi Baishi was over 80 years old when he made this "fishing picture". He expressed his deep longing for his hometown. The picture depicts a grey bench, a fishing rod wrapped with a thin silk thread, and a bamboo basket with two small fish in it, which takes us to the country life. Although no figures appear, the whole painting is very imaginative. It seems possible to imagine a living world full of vigor and vitality. This is the unique artistic language of Qi Bai shi.



81: LARGE OPIUM WEIGHT

EUR 600 - 800

Bronze Laos , 18th century Dimensions: Height 25 cm Width 20 cm Depth 14 cm Weight: 14,25 Kg The weight has the shape of an abstract lion on an octagonal base and with a handle between head and tail.



82: AMOGHAPASA WITH MANDORLA

EUR 8,000 - 12,000

Bronze gilt and copper repousse Nepal , 14th century and 16th century Dimensions: Amoghapasa = Height 16 cm Wide 10 cm Depth 5 cm Mandorla = Height 33 cm Wide 32 cm Depth 1,5 cm Amoghapasa Weight: 525 grams Mandorla Weight: 2571 grams with black stand Bodhisattva Amoghapasa standing in the center of a three-banded mandorla, the first band containing ornamental sprays, the middle one various flowers and the outside one with flames. His name means "unfailing lasso" because his noose or pasa never fails to bind and secure devotees. The bodhisattva is standing in slight tribhanga pose and has eight arms fanning out to the side holding attributes or showing mudras. He is usually depicted with four faces. His body is adorned in jewellery, large ear pendants hang down onto his shoulders and a winged tiara encloses his high chignon. He is smiling benevolently.



83: MORI YOSHITOSHI (1898 - 1992)

EUR 1,000 - 2,000

Kappa-Zuri Japanese Woodprint 1973 Signature Yoshitoshi Mori '73 Number 9 of 50 Benkei and Ushiwakamaru on the Gojo-bridge Dimensions: 87 cm x 62 cm The Technique of the "KAPPA-ZURI" Stencil Prints It is impossible to separate Yoshitoshi Mori's stencil prints from his "Kappa-Zuri" technique. His style represents a near perfect fusion of the two. In producing his prints, Mr. Mori first produces a sketch. When the sketch is finished to his satisfaction, he then places it on the top of a brown paper stencil, which consists of several thin layers of feather-like paper, bound together with lacquer and moisture-proofed with tannin. (Kappa means binding feather together, and zuri means print). Mr. Mori then proceeds to cut away the stencil with a tiny, sharp knife until the sketch has been transferred onto the stencil. In adding color to the print, he protects the rice paper with a special paste, so that the vegetable pigments are applied only where he wants them. On occasion he uses brushes to apply hal-tone colors. When the print is completed, the paste is washed off in the final stage.

Fine International Art Sale No. 18



84: STUPA

EUR 800 - 1,000

Bronze Tibet , 12th century Dimensions: Height 25 cm Wide 12 cm Depth 12 cm Weight: 1420 grams Bronze stupa with circular flower petals and beaded rim at the bottom elevating to a bell-shaped body followed by an inlaid pedestal followed by 13 conical rings surmounted by a circular canopy with encarved lotus petals. Topped by a pinecone-shaped diamond or closed lotus blossom. The stupa is sealed.



85: BLUE AND WHITE VASE

EUR 1,000 - 1,200

Porcelain China , Kang Xi Style Dimensions: Height 16 cm Wide 11 cm Depth 11 cm Weight: 630 grams Chinese Kangxi style blue and white vase, of ovoid form with a short neck, having a reeded body with four round roundels, three containing 'bogu' or ancient things and one with a colophon and seals, flanked at top and bottom by bands of precious objects and auspicious cloud forms, having no apparent mark.



86: VAJRAPANI

EUR 400 - 600

Bronze gilt Tibet , 18th century Dimensions: Height 16 cm Wide 11 cm Depth 7 cm Weight: 935 grams Bronze statue of Vajrapani in wide stride and one leg bent, one leg straight, standing on a lotus flower with beaded rim. He is wearing lots of beaded jewellery all over his body, a shawl is billowing around his upper body. His right hand is lifted next to his head holding the name-giving vajra, the other hand is raised in front of the chest holding a knife. He has a moustache and bushy eyebrows, fleshy lips, a broad nose and the urna is incised on his forehead. The deity is wearing an opulent crown which is also decorated with blue stone inlay like the circular ear pendants. The statue is sealed with an engraved double vajra symbol on the bottom. Base can be separated



87: VISHNU

EUR 400 - 600

Bronze India 16th century Dimensions: Height 16 cm Width 8 cm Depth 4,5 cm Weight: 607 grams Vishnu standing on a slightly expanding base and a double reverse lotus flower. Vishnu has four arms, holding his distinctive attributes: the sudarshana chakra, lotus flower, the gada and the shankha. A large garland with flower is hanging down to his knees, jewellery adorning his whole body. He is smiling mysteriously with half-closed eyes. A conical headdress with geometrical incised pattern decorates his head. His hair is done up at the back of his head.



88: WU CHANG SHUO (1844-1927)

EUR 200 - 400

Paper China Dimensions with frame: 223 x 53 cm Painting: 138 x 34 cm This painting was painted in the winter when Wu Chang shuo was 72. A number of plums blossom proudly no fear of cold. The inscription on the left reads "ç"Yæ"é"çY³è, i¼CEä, è, -á) ä°çf-.", express his proud heart will not change for anyone.



89: WOOD TRAY

EUR 300 - 400

Lacquered and Perlmutter China , 19th century Dimensions: Height 3 cm Wide 45 cm Depth 28 cm Weight: 897 grams Rectangular tray with rounded corners showing a reserve created by a line of small triangles framing a branch with leaves and flowers. A small bird is standing on a branch, picking at it with its beak.



90: RARE SEATED GANESHA

EUR 500 - 700

Bronze with silver and copper inlays India , 18th to 19th century Dimensions: Height 8 cm Wide 6 cm Depth 4 cm Weight: 411 grams Ganesha seated on a round base with small flower decorations and his vehicle or vahana the mouse crouching underneath him. Ganesha's has a pear-shaped body with big belly, a garland is draping from his knees, a belt tied around his belly and the sacred thread running along his torso. Ganesha is wearing anklets, armllets and bracelets and multiple necklaces. He has four hands, two are raised at the back holding a mace and a conch shell, both have a curved shape with decorative pattern, giving him a stylized look. Two hands in the front are holding his broken tusk and a ball of sweet laddu, he is reaching for the sweet with his trunk. Ganesha is wearing a conical, patterned crown, his hair is done up nicely at the back. The statue is hollow.

Fine International Art Sale No. 18



91: CANDLE HOLDER

EUR 300 - 400

Bronze India 18th century Dimensions: Height 16 cm Wide 6 cm to 17 cm opened Weight: 653 grams Candle stand in the shape of a closed lotus bud with long, slender petals which can be opened to expose the candle holder.



92: MANJUSRI

EUR 400 - 600

Bronze firegilt with Symbols and Inscriptions Tibet , 17th century Dimensions: Height 16 cm Width 12 cm Depth 8 cm Weight: 756 grams Seated Bodhisattva on double reverse lotus base with beaded rim, cross-legged and showing the dharmachakra mudra. The base has inscriptions in the flower petals and on the bottom. The legs are covered by a dhoti with floral decoration and beaded brim. The body is adorned with beaded necklaces and bracelets with stone inlay. A thin shawl billows around the deity's shoulders. A winged, five-pointed tiara encircles the chignon. The square face has small features, red lips, downcast eyes and a large urna between the thin eyebrows. Two flowers are growing beside the Buddha, one carrying a holy script. The statue is sealed. Very unusual to see tibetan symbols and the eight auspicious symbols of luck engraved in the Lotus base



93: MIRROR DEPICTING FLOWERS

EUR 400 - 600

Bronze China , Dynasty Dimensions: Height 13 cm Wide 13 cm Depth 1 cm Weight: 435 grams Chinese mirror in Lotus shape with two horses, floral and vegetal motifs.



94: JADE COMB

EUR 300 - 500

Jade China , Hong Shan culture ? Dimensions: Height 6 cm Width 10,5 cm Depth 0,5 cm Height 4,5 cm Width 1,8 cm Depth 1,8 cm Weight: 52,5 grams + 31,4 grams Jade comb in the shape of a tao tie face, hook-cloud PEI, with 5 small holes, mainly used for sacrificing.



95: SEATED BUDDHA

EUR 600 - 800

Bronze China , 19th century Dimensions: Height 50 cm Width 39 cm Depth 28 cm Weight: approx 20 Kg Large seated Buddha with legs crossed, dressed in flowy robes. His right hand is raised in front of the chest with palm facing towards the viewer, the left hand placed in front of the belly with palm facing the sky and middle finger bent towards the thumb. The robe is placed over his left arm. The round face has small features with cherub cheeks, smiling lips, downcast eyes and thin eyebrows. Elongated earlobes frame the face, the hair in tiny curls. The statue is hollow.



96: BROKAT DEPICTING PEACOCK

EUR 200 - 400

Thailand , 20th century Dimensions: Height 56 cm x Width 56 cm In golden frame, designed with sequins and embroidery in golden colours. Various ornamental patterns and shapes surround the center piece, a peacock in stride gazing back at its tail.



97: TWO SEATED BUDDHAS

EUR 500 - 800

Bronze China Northern Wei Dynasty , 6th century with Inscriptions Dimensions: Height 12 cm Wide 6 cm Depth 3 cm Weight: 170 grams

Fine International Art Sale No. 18



98: WU CAI PORCELAIN DISH

EUR 1,000 - 1,200

Porcelain with mark China , Qing Dynasty , Kang xi mark Dimensions: Height 8 cm Diameter 42 cm Weight: 3008 grams Round dish in wu cai style meaning a limited use of arranged glazes. The inside of the dish is decorated with a band on the lip filled with geometric pattern interrupted by six reserves containing various objects possibly attributes to the persons depicted in the center of the dish. A lively and dynamic scene with various men and riders hunting deer and foxes, other noblemen arguing standing on a small terrace and another man of lower status tending to two horses. The outside of the dish is decorated with three branches with a red flower. The battle scenes in classical novels such as The Romance of The Three Kingdoms and Grant Titles to Gods are depicted with the themes of sword (weapon), horse (war horse) and people (warrior), which have a strong national style and folk flavor.



99: RUDOLF HERZSPRUNG (geb. 1904)

EUR 150 - 300

Aquarell Größe: 47 cm x 60 cm Signiert: unten rechts Motiv: Priel und Juist



100: TEMPLE ELEPHANT

EUR 600 - 800

Bronze with Silver eyes Tibet , 17th century Dimensions: Height 15 cm Wide 9 cm Depth 15 cm without base Weight: 2404 grams with base A standing elephant supported by a pillar attached to a flat surface in the center and attached to a plinth. The elephant is adorned with anklets and an ornamental saddle is attached by quasseled belts which are incised on the animal's body. A small noose is attached to the center of the back. Its' trunk is lowered gently, eyes are inlaid with silver.



101: BUDDHA

EUR 800 - 1,000

Bronze Kashmir , 12th century Dimensions: Height 9 cm Wide 7 cm Depth 3 cm Weight: 147 grams Seated Buddha on lotus throne with legs crossed and showing the varada mudra. Dressed in a flowy garment. The eyes are open gazing with attentive expression, tiny curls cover head and ushnisha. A small metal noose is attached to the back.



102: SAN CAI JAR

EUR 400 - 600

Pottery China , Tang style (618 - 907) Dimension: Height 22 cm Width 22 cm Depth 22 cm Weight: 2755 grams Three-glaze plum vase with characteristic colours green, brown and creamy white or beige.



103: VIRABHADRA

EUR 400 - 600

Bronze India , 17th century Dimensions: Height 20 cm Wide 12 cm Depth 5 cm Weight: 1060 grams Virabhadra is a fierce form of God Shiva, here standing in a striped, long dhoti tied around the waist, a curved knife placed inside a belt pocket. A garland is hanging down from the shoulders, the chest decorated with armor and jewellery. The deity has four arms, the hands are holding a bow, a decapitated head, a sword and a bow. Virabhadra has a moustache, his glimpse is serious. He is wearing a winged conical crown.

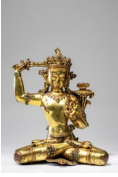


104: KNEELING HANUMAN

EUR 800 - 1,000

Bronze India , 16th century Dimensions: Height 14 cm Width 9 cm Depth 13 cm Weight: 1180 grams The King of Monkeys and Kites kneeling on one knee on a lotus pedestal on a rectangular, flat surface. Dressed in armour and a short dhoti, the hands both stretched out as if paying respect to something or someone. He is forming a kind of aureole around his head with his own tail.

Fine International Art Sale No. 18



105: MANJUSRI

EUR 5,000 - 6,000

Bronze firegilt Nepal 15th century Dimensions: Height 21 cm Width 21 cm Depth 14 cm Weight: 4000 grams Manjusri is the Buddha of great wisdom and the sanskrit name is translated as 'Gentle Glory'. Here he is seated with legs crossed, his right arm wielding a sword with which he cuts through ignorance. The left hand is holding the stem of flowers while forming karana mudra to ward off evil. The prajnaparamita sutra script is lying on the flower's blossom. The deity is bent at the waist forming an elegant curve with the body. The face is smiling with downcast eyes, the urna a stone inlay. Dressed in beautiful garment covering the legs decorated with stone inlay and incised ornamental pattern. Manjusri is adorned with elaborate jewellery, wearing a five-pointed tiara with small wings.



106: RARE FORM OF JAMBHALA

EUR 1,000 - 2,000

Clay Nepal , 19th century Dimensions: Height 51 cm Wide 33 cm Depth 25 cm Weight: 13,8 Kilograms Rare depiction of Jambhala, the God of Wealth and Abundance, seated with the soles of the feet touching on a rectangular base. The hands are resting on the knees, holding something, possibly a hint to the mongoose and a fruit. The round belly is sticking out, the fleshy arms adorned with bracelets, a necklace with pendant is hanging down on to the chest. Large floral earrings with small garlands decorate the ears. The hair is parted at the center in the front, creating two small curls. The broad face looks almost child-like with downcast eyes, a small nose and soft eyebrows.



107: CENSER WITH MARK

EUR 300 - 500

Bronze with Xuande Mark China , Qing Dynasty Dimensions: Height 6 cm Width 14 cm Depth 11 cm Weight: 695 grams Censer with two handles attached on the side. The bottom of the censer is decorated with grooved depiction of two dragons playing with the magical ball, encircling the Xuande mark and production year.



108: BRACELET

EUR 300 - 500

Jade Weight: 87,9 grams Bracelet made of pearls in bright green colour threaded on a string.



109: STANDING BUDDHA

EUR 3,000 - 5,000

Black Stone North-India , 12th century Style Dimensions: Height 68 cm Width 38 cm Depth 19 cm Weight: 60 Kg Standing on a lotus base with his right hand in varada mudra and his left holding the folds of his diaphanous sanghati, the folds of which fall in elegant, concentric cascades, the face with full cheeks and downcast eyes flanked by pendulous earlobes, the hair in tight curls over the ushnisha, backed by a flaming nimbus and flanked by attendant figures in adoration, and diminutive stupas at top, all within a flaming border.



110: RITUAL JADE WEAPON GE

EUR 300 - 400

Bronze and Jade China , Warring States ? Dimensions: Height 33 cm Wide 5 cm Depth 4 cm Weight: 739 grams

Fine International Art Sale No. 18



111: BROKAT DEPICTING RIDER ON HORSE

EUR 200 - 400

Thailand , 20th century Dimensions: Height 52 cm x Width 52 cm In golden frame, created with sequins and embroideries in golden colours, ornamental patterns framing the center piece, a rising horse with opulent bridles carrying a rider dressed in armour.



112: COSMIQUE FORM OF SHIVA

EUR 1,000 - 1,500

Gouache on paper , (Framed under glass) India , Kashmir or Himachal-Pradesh 19th century Dimensions: 22 cm x 17,5 cm Rare apparition of Shiva with five faces and nine pairs of arms holding Parvatā sitting on his left thigh. The feet of the god are supported by a red ascetic deity with four arms. The exact identification of this aspect is not clear S Kramrish would have liked to see an aspect of Svachchanda Bhairava, which Dr. Pal thinks is unlikely. This is probably a rare form specific to the foothills of the Himalayas in northwestern India. The miniatures that use this iconography are usually executed in an oval, which here is denoted only in the upper part of the composition. Bibliographic information: P Pal Desire and Devotion Baltimore 2002 p.47 S Kramrisch Manifestations of Shiva Philadelphia Museum of Art 1981 p. 170, 171 Provenance: Josette and Théo Schulmann Collection Acquired in the 1970s



113: PADMAPANI LOKESHVARA

EUR 3,500 - 4,000

Bi-Metall Bronze with Inscription Tibet , 15th century Dimensions: Height 22 cm Width 13 cm Depth 10 cm Weight: 1785 grams Bronze figure of Buddha seated in dhyanasana posture on a double reverse lotus flower on square expansive base with mandorla at the back. One hand is lifted showing the abhaya mudra with prayer beads, gesture of fearlessness and protection, the other hand is resting gently on the knee holding prayer beads and forming a mudra. The face is smiling benevolently. A flower is growing on the side. The back of the base shows an inscription. The statue is sealed.



114: VISHNU AND LAKSHMI ON GARUDA

EUR 300 - 500

Bronze India , 18th century Dimensions: Height 13 cm Wide 6 cm Depth 6 cm Weight: 581 grams Statue of Vishnu and his wife Lakshmi seated on his left knee both on top of the coils of five-headed Shesha and the whole of them is carried on a palanquin by their moun Garuda, here depicted with a human body with beak. The king of birds is kneeling with one leg, holding the palanquin in his hands. Vishnu has four arms, showing the abhaya mudra and holding the discus wheel and conch shell. Lakshmi is holding a lotus flower bud. All three deities have a welcoming smile on their face and they are wearing conical crowns.



115: TRIPOD INCENSE BURNER TYPE 'DING'

EUR 2,000 - 2,400

Cloisonne China , about 1800 Qianlong Dimensions: Height 22 cm Width 17 cm Depth 11 cm Weight: 665 grams Elaborate cloisonne incense burner in archaic ding-shape. On three feet extending from the mouths of makaras or lions, all decorated floral sprays and flowers in colours of green, blue, pink, red and yellow. The lid is interrupted by open-work design of sprays and creatures. A lotus flower stems from the center of the lid followed by a knob decorated with celestial dragon.



116: GANESHA

EUR 1,000 - 1,500

Bronze with Silver inlays India , 19th century Dimensions: Height 38 cm Wide 29 cm Depth 27 cm Weight: 10 Kg Seated Ganesha on a lotus flower on top of a throne with four paw legs. The throne back also creates an aureole of flames, a snake creating a small cover over the deity's head. The elephant king has four arms, with one he is holding his consort who is sitting on his left knee. The other is holding sweets which he is reaching for with his trunk. Two hands at the back are lifted holding a broken tusk and a conch shell. He is wearing a conical headdress, the sacred thread runs over his large belly. His forehead bears a symbol looking like a trident tip.

Fine International Art Sale No. 18



117: DENG ZHONG YUE (1674-1748)

EUR 300 - 500

Ink on paper China , 18th century Dimensions: 240 cm x 68 cm Deng Chong yue was the champion of Kang xi in the sixteenth year, an official in the Qing Dynasty. As the champion, Mr. Deng is not famous for his talent, but for his handwriting. Even the Kang xi Emperor praised his calligraphy attainments as the best in this period. This calligraphy by Deng Zhong yue comes from an ancient poem of the Yuan Dynasty. The key point is his calligraphy, not the poem. His running script is free and unstrained, which is popular among officials.



118: PORCELAIN VASE

EUR 300 - 500

Porcelain China , 16th century Dimension: Height 13 cm Width 8 cm Depth 8 cm Weight: 189 grams Porcelain vase apple shaped, with long cylindrical thin neck, and a pair of symmetrical tubular ears at the top of the neck. The overall shape is beautiful and harmonious.



119: HANUMAN

EUR 900 - 1,200

Bronze India , 18th century Dimensions: Height 25 cm Wide 15 cm Depth 11 cm Weight: 3168 grams Anjaneya is the name of Lord Hanuman that expresses His identity as the son (â€™yaâ€™) of Anjana. He is the son of Vayu and Anjana, known for His invincible strength and valour. On the pistil of an upturned lotus bloom He stands, tall and stately with the right hand raised in blessing, while the left hand holds a gada or mace. He is dressed in armour and adorned with jewellery, a large garland dangling down from his shoulders to the ankles. As such, the stance is gentle and generous, as opposed to the usual warrior iconography of Hanuman. Below a kneeling Garuda with hands in anjali mudra.



120: RAYMOND CHARMAISON (1876 - 1955)

EUR 1,600 - 2,000

Ã–l auf Leinwand Signatur: unten links signiert, 1903 datiert GrÃ–Ã–e: 33 cm x 41 cm Literatur: Thieme Becker , BÃ–nÃ–zit Motiv: Im Park von Versailles



121: TWO CHINESE PAINTINGS

EUR 500 - 800

Paper painted with Gold China , 18th century Dimensions: 35 cm by 24 cm and 33 cm by 18 cm without frame Weight: 3041 grams with frame Two paintings of Chinese Bodhisattva, each in similar pose as mirror image and painted with different colours. The Bodhisattva might be showing Guanyin, the female equivalent in of Avalokiteshvara in Sanskrit. The deity is dressed in fine and noble robes, seated with legs crossed on a mystical lion only partly visible, her head enframed by a circular aureole. The deity is holding the slim stem of a long lotus flower growing to the side, a sutra script is placed on top of the blossom. Guanyin has the fine features of a noble woman with oval face, small lips and nose, eyes downcast and high eyebrows. Her head is adorned with an opulent jewellery headpiece, a necklace on her chest.



122: SECOND DALAI LAMA

EUR 2,000 - 3,000

Bronze with Copper and Silver inlays Tibet , 17th to 18th century Dimensions: Height 16,5 cm Wide 14 cm Depth 9 cm Weight: 1334 grams Dalai Lama seated on a double reverse lotus throne with legs crossed, one hand resting on the leg, the other resting in the lap with palm facing upwards. The religious leader is dressed in prosperous robes showing several different pattern designs in many details. The Lama's head is rather small with large ears and short hair. The statue is sealed.

Fine International Art Sale No. 18



123: BHUTA MASK JUMADI

EUR 400 - 600

Bronze India , 18th century Dimensions: Height 45 cm Wide 50 cm Depth 25 cm Weight: 6,8 Kilograms with base Mask most likely from Tamil Nadu, South India which was used in Bhuta ceremonies or to worship. This one most likely represents Jumadi, here wide grin exposing two fangs in the corner, a broad nose and bulging eyes with bushy eyebrows. The crown is decorated with many small serpent hoods, followed by larger serpent hoods intermitted by decorative spikes.



124: SNUFF BOTTLE

EUR 400 - 600

Jade China , 19th century Dimension: Height 6,5 cm Width 4 cm Depth 2,5 cm Weight: 84,1 grams Jade snuff bottle with lid in bright, mesmerizing green colour with cloudy hues.



125: ROTER MENSCH

EUR 150 - 200

Ä-I auf Leinwand , gerahmt Maßße: 25 cm x 14 cm rÄ¼ckseitig beschriftet: MÄ¼ller



126: INK BOX

EUR 250 - 350

white Jade China 19th century Dimensions: Height 2,5 cm Width 10 cm Depth 8 cm Weight: 232 grams Jade ink well of bright, white colour with carving of a celestial dragon on the lid.



127: GANESHA

EUR 300 - 400

Silver India , 18th century Dimensions: Height 7 cm Wide 5 cm Depth 4 cm Weight: 272 grams Seated Ganesha on round lotus base attached to square surface. He has four arms holding his attributes, his trunk is reaching for the sweets in his right hand. He is wearing a short dhoti with incised pattern and a conical tiara with diamond bud finial.



128: VASE

EUR 1,600 - 1,800

Blue and White Porcelain China , 14th century Dimensions: Height 25 cm Width 16 cm Depth 16 cm Weight: 937 grams Huluping vase in blue and white underglaze. The bulbous body is and the neck both have a band of ornamental petals on the bottom. The main part of the body is painted with a scenery of children frolicking in nature holding pinwheels and toys. The view is obstructed by leaves and flowers. The beck is painted with a landscape of barren trees on rocks and mountains shrouded in clouds far in the distance.



129: PAIR OF GARUDAS

EUR 800 - 1,000

Clay India , 19th century Dimensions: 48 cm by 31 cm and 47 cm by 33 cm without bases Weight: approx. 25 Kilograms both with base Two almost identical clay statues of Garudas, the King of Birds, seated on a small throne. Garuda is depicted as mostly zoomorphic creature except for a pair of arms, the ears and some part of the face. The main body is covered in feathers, the feet are crawls holding the heads of two snakes which are coiled around the deity's body, the wings and arms are spread and also holding the body of the snake. Both Garudas wear jewellery of different shape.

Fine International Art Sale No. 18



130: BUDDHA

EUR 600 - 800

Bronze with Silver eyes Swat Valley , 10th century Dimensions: Height 9,5 cm Wide 7 cm Depth 3 cm Weight: 239 grams Swat valley Buddhist sculpture's characteristics are large, unadorned lotus bases and primarily Buddha figures like Maitreya and Bodhisattva Lokeshvara are depicted. Here we see the Buddha on a large double lotus base with bulbous petals, seated with legs crossed in a flowy robe covering the body. He is gesturing the vajra mudra, standing for knowledge and enlightenment. His face is highlighted with silver eyes, the head backed by an aureole with decorative brim.



131: SHIVA DAKSHINAMUTRI

EUR 2,000 - 3,000

Bronze India , 19th century Dimensions: Height 55 cm Wide 40 cm Depth 40 cm Weight: 31,2 Kilograms Dakshinamurti represents Shiva as teacher of yoga, wisdom, music and meditation. Four-armed Shiva is seated with the left foot placed on the right knee on a rocky mound, surrounded by four bearded rishis listening to Shiva's words. With his other foot he is crushing Apasmara, the demon of forgetfulness. He is holding a hand drum in his hand resting on his knee, the other hand is raised with index finger and thumb touching and holding prayer beads. Two raised hands are holding the fire agni and a hand drum with a wrapped around serpent. He is wearing a short dhoti and a belt with a kirtimukha buckle. Shiva is sitting beneath the banyan tree whose branches are occupied by birds and a serpent.



132: AVALOKTISHVARA

EUR 2,600 - 3,000

Bronze Ladakh / West-Tibet, 13th to 14th century Dimensions: Height 32 cm Wide 15 cm Depth 8 cm Weight: 3414 grams Bodhisattva standing on round surface with head gazing slightly to the sky although with eyes closed, his left knee slightly bent. Belts are hanging below the waist, armlets, bracelets, necklace and anklets adorn the body. A flower garland hanging down from the arms, a three-pointed tiara on the head enclosing the hairbun. Flower pendants hanging from the ears. From the back the different strands of hair can be seen, first three layers of wavy strands followed by braids hanging down on the shoulders.



133: PENSIVE BUDDHA

EUR 300 - 500

Bronze Kashmir , 14th century Dimensions: Height 7 cm Wide 4 cm Depth 3 cm Weight: 55 grams Small bronze of Buddha seated on a rectangular cushion with tassels on the corners on a throne with circular holes. The Buddha's left leg is pendant from the edge, touching the floor with the toes. He is dressed in a striped dhoti with belt. One arm is resting on the thigh holding the stem of a flower. The other hand is placed at the shoulder as if in the middle of resting the cheek in it. The torso is bare except for some jewellery. The head is calm with fleshy lips and a large nose, drop-shaped pendants hang from the ears and a tiara presses the wavy long hair to the head. A small noose is attached to the back, the statue is hollow.



134: BLUE AND WHITE CENSER OR 'GUI'

EUR 1,000 - 1,200

Porcelain China , Kang Xi Style Dimensions: Height 9 cm Width 12 cm Depth 12 cm Weight: 374 grams Chinese Kangxi style blue and white 'gui' or porcelain censer, decorated with pointed arch lappets filled with lotus scrollwork, joined by ruyi symbols, the underside having a blue double circle mark.



135: VAJRA

EUR 250 - 450

Bronze China , 17th century ? Dimension: Height 6,5 cm Wide 20 cm Depth 2 cm Weight: 375 grams Flat, abstracted vajra with three knobs as handle, the prongs rising from the face of a makara and symbolically represented by two-dimensional shape.

Fine International Art Sale No. 18



136: PAIR OF CLOISONNE BOWLS

EUR 500 - 700

Cloisonne China or Japan , 19th century Dimensions: Height 13 cm Wide 26 cm Depth 26 cm each Weight: 991 grams each Both bowls with flaring lips and round foot, main colour blue and highlight colours gold, black and brown. or formerly red. The well of the bowl show a circular reserve with ornamental waves and gushing water, a large carp fish looking up from the waves, gazing at a sun. The walls of the bowl are decorated with ornamental background, the same waves and gushing water. Four winged horses intermitted by ornamental clouds run along the side, the outer edge decorated with clouds in alternating colours. The painting on the well of the other bowl is slightly different but same in nature. The outside of the bowl is decorated with branches and floral sprays. A mark and small pictogram can be found on the bottom.



137: CARL HILGERS (1880 - 1890)

EUR 900 - 1,200

Motiv: "Heimkehrende Fischer" Material: Äl auf Holz Signatur: Unten links signiert, (18) 77 datiert Größe: 23 cm x 27 cm Literature: Thieme-Becker, Müller-Singer, BÄ nÄ zit, Boetticher, DÄ sselldorfer Malerlexikon



138: MIRROR

EUR 800 - 1,000

Bronze China , Zhan Dynasty (475 - 221 BC) Dimensions: Height 21 cm Wide 21 cm Depth 1 cm Weight: 1009 grams Bronze mirror with intricate pattern, a small knob at the center enframed with circular band. The main background pattern consists of dotted areas interrupted by lines forming ornamental shapes like clouds. This pattern is highlighted with randomly placed raised hoops and large grooved geometric shapes converging from the raised rim.



139: VISHNU SHRINE

EUR 300 - 400

Bronze India , 19th century Dimensions: Height 18 cm Wide 13 cm Depth 5 cm Weight: 1235 grams This is a classic representation of Vishnu with his consorts Sri Devi and Bhudevi, on a rectangular t-shaped base with six feet, the front supported by a kneeling Garuda with hands in anjali mudra. On top of the base are three lotus flower bases, from the back extends a large mandorla gate-like opening in the center, followed by a row of small standing adorants and lastly a row of flames centered by the fearsome face of a kirtimukha. Vishnu is standing in the center with one hand in varada mudra, the other palm facing the floor, two hands at the back raised holding the dharma chakra and shankha. He is flanked by two consorts ,Sri Devi and Bhudevi, in slight tribhanga pose, the outer hand gently hanging down next to their hip, the other holding a lotus bud. The back is flat.



140: BRIDGE-EAR CENSER

EUR 400 - 600

Bronze China , Qing Dynasty (1636-1912) Dimensions: Height 8cm Width 14,5 cm Depth 14,5 cm Weight: 1326 grams Tripod incense burner with bridge ears, bowl shaped , three short legs , a flattened globular belly and two bridge ears as handles attached to the lip. Xuande Mark written in six characters on its bottom.



141: A FRAMED LEATHER CARVING

EUR 200 - 300

Leather painted China , modern artist Dimensions: Height 28,5 cm by 20 cm without frame Weight: 708,5 grams with frame Modern leather carving by a Chinese artist in a frame. A little winged pixie or fairy is sitting on a branch with acorns and leaves wearing an acorn cupule as hat. With signature: Tae Ho

Fine International Art Sale No. 18



142: VAJRA

EUR 300 - 500

Bronze Tibet , 18th century or earlier Dimensions: Length 13 cm Height 3 cm Weight: 130 grams Small eight-pronged vajra.



143: STANDING BUDDHA

EUR 5,000 - 7,000

Bronze Pagan , 12th century style but 18th century Dimensions: Height 113 cm Width 30 cm Depth 30cm Weight: 26,7 Kg Standing Buddha with right hand gesturing abhaya mudra, gesture of protection and peace, the left hand is holding the robe's brim. The head is distinctive for this era. Tight curls, ushnisha at the back of the head, crowned with a lotus flower. Pagan had it's peak from the 11th to 15th century but continued to be protectorate of Burmese kings including the monarch Thibaw. The Glass Palace Chronicle paid much attention to the fact that Pagan was originally a Pyu realm and therefor closely tied to Thayekhittaya, Beikthano, Halin and other Pyu-reigns in central myanmar in the first millenium. The recording of the Pyu-scripts in the Myazedi inscription in 1113 proves a continuing presence in Pagan. The Pyu people were excellent craftsmen.



144: STONE LADLE

EUR 200 - 300

Achat China 19th century Dimensions: Height 3 cm Wide 14 cm Depth 6 cm Weight: 85 grams Decorative ladle with a monkey head on the end of the handle, the spoon decorated with ornamental sprays on the outside.



145: SMALL TIGER

EUR 1,300 - 1,500

Bronze China , Han Dynasty Dimensions: Height 4 cm Wide 9 cm Depth 9 cm Weight: 184,4 grams Small tiger attached to round, flat surface, with mouth agap and fine hairlines incised over the whole body. The lifted tail and backwards-motion of the body creates the look of a tiger in defensive action.



146: HUANG BIN HONG (1865-1955)

EUR 2,000 - 3,000

Mountain and Birds in autumn Dimensions: Height 136 cm Width 69 cm Hanging Scroll depicting landscape painting of trees and mountains



147: SMALL PLATE

EUR 300 - 400

Blue and white Porcelain with mark China , Qing Dynasty Dimensions: Height 4 cm Diameter 16 cm Small plate with painting of ornamental sprays, leaves and large flowers on the outside, the well painted with a circular reserve showing ornamental sprays and large flowers. The inside of the lip decorated with a band filled with ornamental patterns and the flower in side view.



148: EARLY SITTING JAIN

EUR 300 - 500

Bronze with Silver India , 12th century Dimensions: Height 9 cm Wide 6 cm Depth 5 cm Weight: 365 grams Jain seated in dhyanasana on a slanted base with inscription at the front bottom. The jain is dressed in a robe covering his left shoulder, elongated earlobes frame the face and his downcast eyes reveal a silver glimmer. The raised urna in the front is worked in silver as well. Circles define the curls o his head and the ushnisha raises from the head.

Fine International Art Sale No. 18



149: LAMA TSONG KHAPA

EUR 100 - 300

Bronze Tibet , 18th century Dimensions: Height 16,5 cm Width 10 cm Depth 7 cm Weight: 653 grams Seated lama Tsong Khapa, Tibetan Buddhist monk and teacher, on a double reverse lotus base with beaded rims, cross-legged. Dressed in a flowy robe with pointy hood, tied around the waist with a belt, flowers are growing besides him. He is gesturing the dharmachakra mudra, the teaching of the dharma. His expression is welcoming and friendly.



150: PRAJNAPARAMITA

EUR 2,000 - 3,000

Copper repousse with cast hands firegilt Nepal , 15th century Dimensions: Height 14 cm Wide 8 cm Depth 3 cm Weight: 117 grams A personification of "Perfection of Wisdom" or "Transcendental Knowledge" in form of a female bodhisattva, here standing with her left knee bent, the right knee straight in a wider stand, framed by a fiery mandorla. Dressed in a long dhoti with ornamental brim, the upper body adorned with jewellery. She has four hands, holding the Prajnaparamita script and akshamala, two hands forming mudras. Her face is smiling, a third eye between the highly arched eyebrows, wearing a crown. A separate mandorla surrounds her head.



151: BUDDHA ON THRONE

EUR 4,000 - 6,000

Bronze with cold gilt face Tibet or Kashmir Dimensions: Height 23 cm by 14 cm Weight: 1877 grams Seated Buddha with legs crossed and soles showing. The throne is made of a double reverse lotus flower attached to a thin surface and two lions stand on the flower, supporting the throne on the side, a carpet or reserve in the middle. The Buddha is holding his right palm upwards resting on the knee, left hand is raised also palm facing to the sky. The robe is covering his torso and legs forming waves. The ears are elongated, the face is smiling widely, the eyes are open and attentive. The hair and ushnisha is black. Two eyelets are attached to the back of the statue. The statue is hollow.



152: POURING VESSEL

EUR 800 - 1,500

Bronze China , Han Dynasty Dimensions: Height 13 cm Width 24 cm Depth 11 cm Weight: 482 grams Bronze ewer with long spout and cylindrical body decorated with engraved mystical animal resembling a snake.



153: VAJRA AND GHANTA SET

EUR 300 - 500

Bronze Tibet 19th century Dimensions: Ghanta 21 cm , Vajra 16 cm Weight: 832 grams both Five-pronged vajra, each prong stemming from a makara's face. The handle consists of a circular knob followed by a line of beads and a lotus flower on each side. The ghanta bell-shaped body is decorated with a line of repetitive vajras between beaded lines. The main body is decorated with an alternating pattern of kirtimukhas and a reserve shaped by garlands hanging from their heads. Inside the reserves are the Eight Auspicious Symbols of Buddhism. On top of the kirtimukhas' heads lie vajras. The bell dome is decorated by flower petals extending into the handle. The ghanta's handle consist of Buddha heads with circular earrings and spiked tiaras, followed by prongs extending from the mouths of makaras.



154: UNTERTISCH OFEN

EUR 800 - 1,000

Bronze Deutschland , 19. Jh. Maße: Höhe 30 cm Breite 48 cm Tiefe 33 cm

Fine International Art Sale No. 18



155: VAJRACHARYA PRIEST'S CROWN

EUR 600 - 800

Copper repousse with gilding Nepal , 17th century Dimensions: Height 28 cm Wide 20 cm Depth 20 cm without base Weight: 715 grams Conical crowns like this one are unique to Newari Buddhism. This crown entitles its holders to perform reserved priestly functions. It consists of three levels with several diadem plaques placed all over depicting emanations of the Buddha. All is surmounted by a five-pronged thunderbolt scepter or vajra.



156: ZHANG DA QIAN (1899 - 1983)

EUR 300 - 500

Watercolour on paper China , 20th century Dimensions: 122 cm x 55 cm Teacher and scholar in the center while to the left and lady serves tea and food.



157: SQUARE BOTTLE

EUR 400 - 600

Red glazed Porcelain China , Qing Dynasty Dimension: Height 37 cm Width 17 cm Depth 17 cm Weight: 3581 grams Four-sided vase with square foot and opening covered in ornamental sprays and flowers all over interrupted by bands of repetitive patterns like key fret pattern. The lip is free of painting. The neck shows some signs of wear in colours on two sides. This glazed red square bottle has very unique shape with double dragon pattern and wrapped branch lotus pattern on the body, the color fades because of the age. Small crack on the mouth, and a star-shape cracks at the bottom.



158: KARL KAUFMANN (1843 - 1905)

EUR 250 - 400

Öl auf Leinwand signiert: unten links , B. Lamert (Pseudonym von Karl Kaufmann) Maße: 25 cm x 20 cm Motiv: Gebirgslandschaft



159: PADMAPANI LOKESHVARA

EUR 400 - 600

Bronze Kashmir , 10th century Dimensions: Height 9,5 cm Wide 5 cm Depth 2 cm Weight: 132 grams The Lotus-Bearer seated on two crouching animals, probably lions or tigers, with one leg drawn close to his body, the other standing on the floor. He is showing the varada mudra with his right hand, the other is holding the stem of a flower which is resting on his left shoulder. Wearing a headdress and circular earrings, his expression is serene with downcast eyes. The bronze shows some patina especially around edges and nooks.



160: FIVE HOLE RECEPTACLE

EUR 150 - 250

China Porcelain Dimensions: Height 7 cm Wide 17 cm Depth 17 cm Weight: 614 grams The five-hole receptacle is popular in Ming and Qing dynasties. There are five holes standing on the porcelain pot, normally, the middle hole is highest, the other four holes are relatively short. This is used for flower arrangement.



161: BROKAT DEPICTING RIDER ON ELEPHANT

EUR 200 - 400

Thailand , 20th century Dimensions: Height 51 cm x Width 51 cm Worked with sequins and embroidery in elaborate patterns centering the main piece, a rider in opulent clothes on a striding elephant.

Fine International Art Sale No. 18



162: TWO SMALL CONTAINER

EUR 200 - 300

Dimensions: Height 2 and 3,5 cm red lacquer China 19th century Dimensions: Height 2,5 cm and 4 cm Weight: 27 grams both Two small containers of red lacquer and ornamental sprays and leaves. The flatter container has some string attached to the top part.



163: RARE BHAIRABA WITH CONSORT

EUR 2,000 - 3,000

Bronze gilt Nepal 17th century Dimensions: Height 13 cm Width 11 cm Depth 7 cm Weight: 923 grams A depiction of a four-armed deity, possibly Bhairaba, kneeling on one leg while the other leg is bent, sitting close to the ground. He is sitting on a floral base with small adorants to his feet. Three arms are spread to the sides, one is raised in the front and all are forming mudras. A consort is hugging him from the front, holding ritual objects and with her legs wrapped around the god's hips. The wrathful emanation is wearing long garlands with severed heads and skulls, a scarf is billowing down besides him. His face with the third eye is gazing upwards, the crown decorated with skulls and a celestial moon and sun in the center. The statue is hollow, the back is kept simply without details.



164: SHADAKSARI LOKESHVARA

EUR 300 - 500

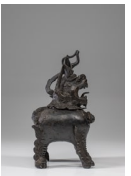
Bronze Nepal , 19th century Dimension: Height 15 cm Wide 9 cm Depth 5 cm Weight: 676 grams Seated in dhyanasana on a double-lotus base, the primary hands folded in anjali mudra in front of the chest and the secondary hands holding a beaded mala and lotus, clad in a diaphanous dhoti and adorned with jewelry and a tiara , the hair piled into a high chignon , the base opened.



165: WU SHI XIAN (1845 - 1916)

EUR 200 - 400

Landscape Painting China , Qing Dynasty Dimensions: 220 cm x 52 cm Sunset glow, Streams & Mountain Wu Shi Xian, a modern painter of the Shanghai style, was born in Nanjing. His landscape has a unique style, and he is good at depicting the misty and ethereal scene of Jiang Nan. Wu Shi xian's greatest contribution to painting art is not ink or skills, but that his paintings are mostly based on natural life. This picture of "sunset glow, streams and mountains" depicts the landscape of Jiang Nan in autumn. Under the sunset glow, there are birds flying back home. In a nearby attic, two scholars are reading and discussing. The whole painting does not reflect the bleak autumn, but makes people feel full of life.



166: LU DUAN

EUR 700 - 900

Bronze China , Ming Dynasty Dimensions: Height 22cm Wide 12 cm Depth 10 cm Weight: 1034 grams A luduan is an auspicious creature, a mixture of lion, rhino, dragon, bear, fish and ox. This one is standing erect with mouth agape as if growling towards the sky.

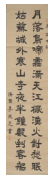


167: DANCING KRISHNA

EUR 1,200 - 1,500

Bronze India 16th century Orissa Dimensions: Height 23 cm Width 9 cm Depth 8 cm Weight: 1354 grams Bronze statue of Krishna, god of protection and an avatar of Vishnu, here standing on a square elevated socket supported by two horses facing each other on the front. Krishna is balancing on his left foot, his right leg bent at the knee, the foot hovering midair. He is wearing a short dhoti with dot pattern, fastened around the waist with beaded belts. He has four arms, one is missing from the wrist, another from the elbow. The remaining arms are lifted in the air, one thrown backwards over his shoulder, the other hand hovering in front of his face. It is most likely Krishna was originally holding a flute to his lips. His chest is adorned with multiple necklaces, large circular earrings are dangling down from his elongated earlobes. The face is very broad with a distinctive nose. The hair is done up in a double chignon.

Fine International Art Sale No. 18



168: LI YAN ZHI

EUR 200 - 400

Ink on paper China , 19th century Dimensions: 194 cm x 43 cm Li Yan zhi, a famous court calligrapher in the late Qing Dynasty, he wrote this calligraphy on the Mid-Autumn Festival in 1911, quoting the famous poet Zhang Ji's poem "æœ`è½á¹CEá¼éœœæ»jâ©i¼CEæ±Yæž«æ,"ç«`â¹æ,çœ`â€¸,âS`è`ràYZâ±-â`â±±â`o¼CEâœáSé`Yâ£°`â°â`çè`¹ " Although Li Yanzhi was called a court calligrapher and painter, he was actually still famous for his calligraphy. At present, the popular calligraphy works are mainly regular script; this work is one of his masterpieces.



169: SET OF JADE JEWELLERY

EUR 750 - 1,000

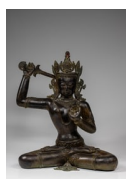
Weight: total 85,6 grams Set of necklace, bracelet, finger ring and earrings.



170: SEVEN ANCIENT JADES

EUR 100 - 200

Jade Total weight: 274 grams Seven different ancient jades in various shapes and sizes of various colour hues.



171: MANJUSHRI

EUR 2,000 - 4,000

Bronze Nepal , 19th century Dimensions: Height 69 cm Width 65 cm Depth 35 cm Weight: Approx. 20 Kg Powerful image cast in bronze depicts the Bodhisattva of wisdom seated with his legs locked, brandishing a sword to cut through ignorance™ . His left hand makes a gesture to bestow patience (tip of the middle finger on tip of the thumb). His heavy belt is made of thick roundels featuring lotus flowers. Manjushri is the Bodhisattva of keen awareness. A disciple of the historical Buddha Shakyamuni, he represents wisdom, intelligence and realization, and is one of the most popular Bodhisattvas following Avalokitesvara.



172: HEAVENLY CHICKEN VASE

EUR 400 - 600

Bronze China , 19th century Dimension: Height 23 cm Width 18 cm Depth 8 cm Weight: 2619 grams Chicken shaped bronze standing on woodbase, the beak tip is sharp and hooked, the tail and feet are rolled inside its bottom, and its back carries a vase. This bronze in the shape of a bird is generally called the "Heavenly Chicken Vase". The "Heavenly Chicken Vase" means treasure, exorcise evil spirits, and it is also a symbol of heroism sometimes.



173: TIGER

EUR 300 - 400

Oil on canvas Thailand , 20th century Dimensions: 80 cm x 60 cm Calligraphic painting of a tiger with fat brush strokes. Signed low right corner.



174: SMALL DISH

EUR 400 - 600

Canton-enamele China 18th - 19th century Dimensions: Height 2 cm Width 13 cm Depth 13 cm Weight: 76 grams Small round dish on three feet. Golden lip with blue rim decorated with golden ornaments. The middle of the dish painted in yellow background colour with colourful floral sprays surrounding a central large blossom.

Fine International Art Sale No. 18



175: PENDANT WITH GRAIN STRIPES

EUR 1,800 - 2,000

Yellow Jade China , The Warring States period (B.C.475-B.C.221) Dimensions: Height 10,5 Width 10,5 cm Depth 0,4 cm Weight: 80 grams Bi-Disk with grain pattern. The whole disk is decorated with grain patterns.



176: LAMA TSONG KHAPA

EUR 3,000 - 5,000

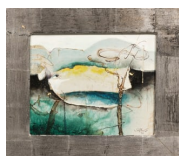
Bronze gilt Tibet 19th century Dimensions: Height 24 cm Width 28 cm Depth 13 cm Weight: 1500 grams Statue of the Tibetan Buddhist monk, philosopher and tantric yogi seated on a double reverse lotus throne with beaded rim with his legs crossed, dressed in robes and shawls. He is holding a small vessel containing the nectar of immortality in his left hand resting in his lap, the other hand is raised in front of his chest with thumb and index finger touching. His broad face is smiling with downcast eyes. He is wearing the traditional headdress of Buddhist monks. He is holding the stems of two lotus flowers which are towering next to his head, one holding the sword of wisdom, the other the scripture of perfection of wisdom. The statue is still sealed. On the back of the throne is an inscription.



177: STANDING VISHNU

EUR 6,000 - 8,000

Bronze Himalya Region , 12th century Dimensions: Height 48 cm Wide 21 cm Depth 7 cm Weight: 4286 grams Standing Vishnu dressed in translucent garments fastened around the waist with belts, body adorned with elegant jewellery like armlets and bracelets. The Hindu god has a slim waist and is standing erect, two arms hanging down at the side of the body holding a small, circular object in his right hand while thumb and index finger touching and also the panchajanya. Two raised arms are holding weapons, the sudarshana chakra and the kaumodaki. Three necklines are clearly visible, the oval, fleshy face has small lips, an edgy nose, the eyes have a piercing look and a small urna on the forehead. Elongated earlobes are decorated with pendants, the hairlines are visible underneath a five-pointed tiara enclosing the hair bun. A fiery mandorla surrounds his head. The backside shows slightly less detail, the mandorla is flat at the back.



178: HERBERT FINSTER (1930 - 2000)

EUR 100 - 200

Mischtechnik auf Leinwand Signiert: H. Finster 86 MaÃŸe: 31 cm x 25 cm



179: OSKAR MULLEY (1891 - 1949)

EUR 2,400 - 3,000

Material: Ã–l auf Malpappe Motiv: Haus am See GrÃ¶ÃŸe: 50 cm x 61 cm Signatur: links unten Literatur: u.a. Thieme Becker



180: BLUE AND WHITE DISH

EUR 50 - 100

porcelain China 19th century Dimensions: Height 3 cm Diameter 15 cm Weight: 214 grams Blue and white underglaze dish with few painting on the outside, a repetitive pattern of strokes and circles. The inside is painted with a circular main piece in the center showing a landscape with water in the back and a bird standing on a rock between plants. The border of the dish is separated into eight reserves showing decoration and ornamental paintings.

Fine International Art Sale No. 18



181: DOUBLE GOURD SHAPED VASE

EUR 700 - 900

Porcelain China , Ming Dynasty Dimensions: Height 28 cm Wide 14 cm Depth 14 cm Weight: 1222 grams Huluping vase in hexagonal shape. The main background decor is a red tile geometric pattern. Turquoise lines create reserves on each side. A circular reserve in each square area contains paintings of golden flowers like chrysanthemums. The neck's circular reserves are painted with golden Chinese characters. One side of the vase has suffered more paint loss than the other.



182: JU JIE (approx 1530-1585)

EUR 600 - 800

Calligraphy ink on paper China , 16th century Dimensions: 205 cm x 55 cm æ½@æ» ;æ~¥æ±ÿâ»¼ Ink on paper Ju jie was a famous painter and poet in Ming Dynasty. This "Tidewater Filling the Spring River" is his classic masterpiece. In the top left corner of the painting, he wrote a poem himself æ½@æ» ;æ~¥æ±ÿâ»¼ ä, æµi¼Œä, œéŒŽæ%tæš-æÿ³â^æÿ"ã€ ,âµ•é~³é¥èšé'á±±è%²i¼Œä'ç 'æµ@ä°è½â°è`ÿã€ , This painting was painted in February of Xin youi¼^circa 1561i¼%. It depicts a warm day in spring when the river is full of tidewater and the east wind is blowing. The trees on the mountain began to turn green, and the willows by the river began to sprout. The whole picture is quiet and beautiful, and the painting style is elegant and fresh.



183: HUANG MIAO ZI (1913-2012)

EUR 300 - 500

Paper Dimensions with frame: 176 x 50 cm Painting: 80 x 37 cm Mr Huang is a well-known cartoonist, calligrapher and writer. This seal character couplet reads" æ±ÿæµâµ@äœ°âµ-i¼Œä±±è%²æœ%æ— ä, -ã€ ,? Provenance: â€œâšâµæ-(?on 5th July, 2014 in Shang hai, LOT283, the hammer price is 13800 RMB.



184: ROBERT HOLL (1913) Kirche im Wald

EUR 800 - 1,000

Ä-I auf Leinwand Signiert: unten rechts , R. Holl MaÃÿe: 79 cm x 58 cm



185: ELEPHANT

EUR 300 - 500

Bronze Cambodia , 13th century Dimensions: Height 12 cm Wide 9 cm Depth 18 cm Weight: 1062 grams Standing elephant with trunk hanging down to the floor gently. The bronze shows different green and brown hues from patina.



186: GREEN TARA

EUR 5,000 - 7,000

Gilt Bronze Tibet , 19th century Dimensions: Height 28 cm Wide 18 cm Depth 11 cm Weight: 2631 grams Figure of a Tara cast seated in dhyanasana on a double lotus base, the right hand lowered in varada mudra, the left hand raised to the chest with thumb touching ring and little finger, wearing a patterned dhoti and a celestial scarf around the body, adorned with beaded jewellery at the waist, arms, and feet, the face tilted downward and the hair pulled into a high chignon. The statue is sealed with an extra piece. This is an exquisite piece in good condition with beautiful details, highlighting the Tara's beauty.



187: WHITE BRACELET

EUR 100 - 200

Jade China Dimensions: Height 1,3 cm Wide outside 8 cm Depth 6 cm Weight: 56,2 grams Circular jade bracelet in very bright and shining white colour.

Fine International Art Sale No. 18



188: BUDDHIST SHRINE

EUR 600 - 800

Bronze India , Pala Style revival , 18th century Dimensions: Height 25 cm Wide 13 cm Depth 7 cm Weight: 1162 grams Shrine with two-tiered base on multiple feet and a fiery aureole topped by one of the Eight Auspicious Symbols of Buddhism and with an open-work flower in the center at the back of the Buddha. The Buddha is seated on a double-reverse lotus throne attached to a stem. The stem also has two branches extending to the sides, each carrying a seated adorant on a lotus petal. One adorant is seated with crossed legs and hands joined in front of the chest, two other hands raised with one holding a flower. The other adorant is seated casually with one leg drawn to the hip, the other knee drawn close and holding a lotus flower. Buddha in the center is seated cross-legged and has four arms. Two are joined in anjali mudra, two other hands are holding a lotus flower and weapon. The Buddha is adorned with jewellery and ear pendants, a crown and he is smiling.



189: BIRD SHAPED INCENSE BOX WITH LID

EUR 500 - 700

Bronze and gold plated Japan , 20th century Dimension: Height 8 cm Width 10 cm Depth 8 cm Weight: 459 grams A seated bird, possibly a pheasant or phoenix, on ground with some flowers. The object can be separated into three parts, the ground, the lower body and head and the wings. The body is covered with golden feathers. The phoenix bird is in prone position, fitted with a rosewood base. It can be opened. Incense boxes were often used as decoration.



190: PORCELAIN JAR

EUR 600 - 800

Porcelain glazed China , Ming Dynasty Dimensions: Height 10 cm Width 10 cm Depth 10 cm Weight: 349 grams Jar with small circular foot and the shape becoming smaller at the top making the opening of the jar smaller than the rest of it. Beautiful coloration in various blue shades.



191: GUANYIN

EUR 900 - 1,000

Bronze China , 13th century Song Dynasty Dimensions: Height 22 cm Width 11 cm Depth 8 cm Weight: 1372 grams Bodhisattva Guanyin seated with legs crossed on a round, double reverse lotus base, holding an underplate and flask in his hands resting in the lap. Dressed in gowns fastened around the waste and a robe over the shoulders. The round face emanates a peaceful bliss with squinted eyes, small urna on the forehead. An opulent crown with lotus petals decorates the head. The backside of the statue is kept simple, hollow from the bottom.



192: PORCELAIN VASE

EUR 300 - 500

Porcelain Blan de Chine China , 19th century Dimension: Height 25 cm Width 13 cm Depth 13 cm Weight: 1282 grams Rotating vase with open-work reserve on the lower body on opposite sides of the vase showing a repetitive geometrical flower pattern. The hexagonal foot is decorated with ornamental sprays. The upper part of the vase is decorated with garlands of pearls and flower pendants leading to pine-shaped ornaments. Two handles in the shape of a makara face with rings on their trunk. The hexagonal opening of the vase is flared. The "revolving vase" is composed of an inner bottle, an outer bottle and a base. When turning the inner bottle, you can see different pictures through the outer bottle, like a merry-go-round.



193: FALKEN SKULPTUR VON H. JSSINGER

EUR 800 - 1,000

Bronze Maßße: HÖhe 48 cm Breite 18 cm Tiefe 14 cm Gewicht: 3736 Gramm

Fine International Art Sale No. 18



194: HEAD OF A BUDDHA

EUR 2,000 - 2,500

Sandstone Southern Cambodia , 7th century Dimensions: Height 30 cm Wide 16 cm Depth 16 cm with Stand Weight: 7600 grams with Stand Buddha head attached to rod, the face is smiling with smooth lips, the eyes almost closed, elongated earlobes. The curls are worked in tiny spirals. Happiness emanates from this sculpture.



195: GAU WITH JAMBHALA INSIDE

EUR 300 - 500

Silver and Copper Tibet , 18th century Dimensions: Height 14 cm Weight: 486 grams A portable miniature shrine with textile case embroidered with celestial dragons and peonies. In the center of the gau is an effigy of Jambhala, God of Wealth, seated with legs crossed. He is holding the mongoose Nehulay in his left hand, the right hand is holding a citrus fruit. The effigy is surrounded by a beaded circle, followed by a decorative band with depictions of the Eight Auspicious Symbols of Buddhism: a parasol, a pair of golden fish, the great treasure vase, a lotus, the right-turning conch shell, the endless knot, the banner of victory and the wheel of dharma.



196: BUDDHA

EUR 500 - 700

Bronze gilt China , 18th century Dimension: Height 27 cm Width 18 cm Depth 12 cm Weight: 3485 grams Seated Buddha on double lotus flower on foot with legs crossed. One hand is placed in the lap, the other is touching the ground with stretched index and little finger, palms facing towards the viewer. The Buddha is wearing a lower garment with ornamental brim, the torso covered by a robe with floral ornaments. The broad face has small features with downcast eyes. The ears are slightly elongated, the ushnisha not very dominant with a crystal on the forehead. The lotus throne can be detached.



197: LAMA

EUR 200 - 400

Bronze Tibet , 19th century Dimensions: Height 8 cm Wide 7 cm Depth 6 cm Weight: 281 grams Lama seated on a lotus cushion with beaded rim on the bottom. His legs are crossed and a robe is wrapped around his shoulders, fastened around the waist, the foot is peeking out underneath the cloth. The hands are calmly placed on his knees. The round face has fleshy lips which are smiling peacefully, the eyes have a friendly and attentive look. His hair is short. The statue is sealed at the bottom.



198: AUSPICIOUS SYMBOL OF LUCK

EUR 80 - 100

tibetan Silver Tibet 19th century Dimensions: Height 23 cm Wide 12 cm Depth 12 cm Weight: 408 grams One of the eight auspicious symbols of luck in buddhism.



199: WALDEMAR KNOLL (1829-1909)

EUR 900 - 1,500

Motiv: Kaukasus Material: Ālleinwand dubliert Signatur: signiert GrĀĀŸe: 118 cm x 79 cm



200: JAMBHALA

EUR 300 - 400

Stone Tibet , 18th century Dimensions: Height 8 cm Wide 6 cm Depth 1,5 cm Weight: 126 grams Stone fragment with a carving of Yellow Jambhala, God of Fortune and Wealth. He is seated on a lotus flower on a step supported by three conch shells and flower buds. His right leg pendant over the flower and foot resting on a small lotus flower bud. His left foot is drawn close to his lap. In his right hand he is holding the neck of mongoose Nehulay who is spewing a string of jewels onto the ground and a fruit-shaped diamond in the other hand. He has a big belly, beaded jewellery adorns his body. He is wearing a tiara enclosing his three-tiered haibrung topped by a diamond, a scarf is billowing around his shoulders. Two apsaras are hovering in the top corners holding a garland. The back of the stone is flat.

Fine International Art Sale No. 18



201: LACQUER CHEST

EUR 900 - 1,000

Wood lacquered China , 19th century Dimensions: Height 20 cm Wide 42 cm Depth 22 cm Weigth: 2800 grams Black wooden chest with lacquer, two hinges at the back, a lock at the front and two metal handles on the short sides. The chest bears a removable level on the inside. All sides are decorated with gold paintings of various flowers in pots and fruit on dishes.



202: STANDING BUDDHA

EUR 400 - 600

Bronze gilt on wood base Thailand , Bayon 13th century Dimensions: Height 14 cm Wide 5 cm Depth 3 cm without base Weight: 645 grams with base In this depiction, Buddha is depicted as welcoming everyone with the hand gesture of encouragement. Another description comes from the literal translation from Sanskrit. There it is referred to as a "gesture of fearlessness" or a "gesture of protection". Buddha standing with encouragement gesture right arm The illustration shows the right hand raised at shoulder level, but usually at chest level. The palms of the raised hand point forward towards the viewer. The Buddha's hand position - gesture of welcoming arose from the idea that Buddha is the highest priority and of course does not have to show respect to anyone. This means that Buddha is never depicted with the usual welcoming gesture, the "Wai" in Thailand. This gesture of "Wai" is also carried out under a different name in some Asian countries. A legend says that Buddha had supernatural powers of sense. He can see with the supersensory eye (divyachakras) what others cannot see. With supersensory hearing (divyaśrotra) he can hear what others cannot hear. This scared many people off that another person could read their minds. This is how the gesture of encouragement came about, in which Buddha shows people not to be afraid.



203: CHAKRASAMVARA

EUR 400 - 600

Bronze Nepal , 20th century Dimensions: Height 33 cm Wide 22 cm Depth 12 cm Weight: 5454 grams The Binding of the Wheels Tantra, a practice and a deity of Buddhist Tantra. Here standing in alidhasana pose, entangled in yab-yum position with his consort Vajravaraḥi, both trampling on multiple prostrate and crouching figures on a large circular lotus platform. He has twelve arms creatively angled holding various ritual implements, including a skull cup, a noose, a battle axe, a hand drum, a crescent-shaped knife and severed heads. Vajravaraḥi is wrapping her right leg around his waist, her gaze turned towards one of Chakrasamvara's four faces. He cradles her in his primary arms, showing vajrahumkara mudra by crossing the vajra and ghanta in his hands. His hair are done up in a high bun, a crescent-moon and vajra extending from the top. The upper body of Vajravaraḥi can be removed. Together they symbolize enlightenment attained through the perfect union of wisdom and compassion.



204: STUPA

EUR 300 - 500

Wood carved Tibet or Bhutan , 19th century Dimensions: Height 21 cm Wide 10 cm Depth 10 cm Weight: 308 grams Wooden stupa with square base, four-stepped tapering followed by a dome. In the center of a dome rises a pillar with ten encarved circles, topped by a diamond. The front of the stupa shows a small alcove. Parts of the base are broken off at the edge.



205: SIX-ARMED SHIVA

EUR 400 - 600

Oil on canvas India , 20th century Dimensions: 97,5 x 67,5 cm Six-armed Shiva sitting in dhyanasana posture on a lotus throne flanked by standing devotees, musicians and two apsaras. The deity is holding a battle axe, mala prayer beads, a small deer and a ghanta bell. Signed: Bottom right 2017



206: GANESHA

EUR 200 - 400

Bronze India , 1950 Dimensions: Height 9 cm Width 7 cm Depth 5 cm Weight: 491 grams Bronze statue of Ganesha sitting on a round, hollow lotus base with beaded rim on a square surface. Sitting in ease position with one leg pendant supporting itself on a small lotus flower, his consort is sitting on his other knee. His consort is dressed in a striped long dhoti, adorned with jewellery and conical headdress, she is holding a conch shell in her hand. Ganesha is also dressed in a short dhoti, adorned with jewellery and wearing a conical headdress. He has four arms and is embracing his consort with one hand. With his trunk he is reaching for the ball of sweet laddu balls which is placed in his right hand, the upper right hand is holding his broken tusk. Looking at his back we see the pattern of his dhoti and belt as well as his hair decoration.

Fine International Art Sale No. 18



207: ERIC SURYIASENA - BATIC WORK DEPICTING PEACOCK

EUR 600 - 800

Sri Lanka Dimensions: Wide 126 cm x 96 cm Intricate batik work in frame showing a peacock.



208: MYSTICAL CREATURE

EUR 600 - 800

Grey Schist Gandhara , 4th century Dimensions: Height 8 cm Wide 9 cm Depth 17 cm without base Weight: 2752 grams with base Stone fragment of a mystical lion with wings on a cornice.



209: PORTABLE HAND WARMER

EUR 500 - 700

Bronze China , Liao Dynasty (907-1125) Dimensions: Height 14 cm Wide 33 cm Depth 7 cm Weight: 470 grams Portable hand warmer in the shape of a lily.



210: MAHAKALA

EUR 500 - 600

Bronze India , 18th century Dimensions: Height 23 cm Wide 10 cm Depth 14 cm Weight: 1345 grams Bronze decor element, possibly a wall mounting, with the head of a mahakala emerging from a conical base with elaborate engraved ornamental pattern. On top of the mahakala's head and trunk stands a lion-like creature with coiled up tail and gaping mouth.



211: HEATING VESSEL IN FORM OF AN ANIMAL

EUR 1,000 - 1,500

Bronze China , 5th century BC Dimensions: Height 15 cm Wide 14 cm Depth 26 cm Weight: 818 grams Heating vessel in the shape of a chicken-like animal on three high feet, a tail, small ears and a beak, the tail also takes the shape of an animal head. The beak opens and forms a spout. The body is decorated with ornamental feathers.



212: RARE SCULPTURE OF KALKI AND PADMA

EUR 300 - 500

Bronze India , 18th century Dimensions: Height 10 cm Wide 7 cm Depth 6 cm Weight: 678 grams Kalki is the tenth and last incarnation of Vishnu, here depicted as his mount Devadatta, the white horse. He is seated on a high throne with one leg pendant, his consort Padma sitting on his left knee. She is holding a lotus flower. Kalki has four arms and is holding Vishnu's attributes, one hand is showing the abhaya mudra. The head has the shape of a horse wearing a conical headdress.



213: LINGAM

EUR 200 - 300

Bronze India , 18th century Dimensions: Height 15 cm Wide 10 cm Depth 7 cm Weight: 584 grams A lingam is an abstract representation of God Shiva, usually a short pillar-like symbol of Shiva, made of stone, metal, gem, wood, clay or other material. This piece is added by a face of the God. He has a short beard and a curly moustache on the upper lip, a prominent nose, large eyes, broad eyebrows and a diamond-shaped urna on the forehead. His ears are decorated with floral pendants. His hair is done up in a headdress with geometric pattern.

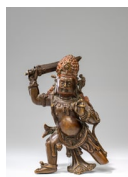
Fine International Art Sale No. 18



214: BUDDHA

EUR 600 - 800

Bronze Gandhara Style , 19th century Dimension: Height 20 cm Width 14 cm Depth 7 cm Weight: 1580 grams Seated Buddha on open-work throne consisting of two tiers, the lower showing kneeling and praying devotees. The upper tier shows two prostrate lions flanking a seated devotee supporting the god with raised hands, two raising deers at the front corners and two kneeling devotees on each side of the throne. The Buddha is dressed in a flowy robe, his hands are raised in front of his chest forming the gesture of teaching or dharmacakrapravartana. His head is slightly bowing to the chest with a faint smile and downcast eyes, the urna between the fine eyebrows. Curls cover the head and ushnisha. There is a small hole in the back of the Buddha.



215: STANDING ACALA

EUR 2,000 - 3,000

Bronze Tibet , 15th century Dimensions: Height 18 cm Wide 12 cm Depth 6 cm Weight: 995 grams Acala is the 'Immovable' and a wrathful deity, here with his left leg kneeling but missing from the knee, standing in a wide stance, wearing a tiger skin loincloth, a large garland dropping down from his shoulders. He is wielding a broad sword with one hand, the other is holding a noose. His broad face is bearded and he is wearing a winged crown with a floral decor at the center. His face looks grim with bulging eyes, a moustache, the teeth clenching and bushy eyebrows.



216: TWO TSUBA

EUR 150 - 200

Bronze Japan 19th century Dimensions: Height 0,2 cm Diameter 7 cm each Weight: 183 grams both A tsuba is a guard at the end of the grip of bladed Japanese swords and alike. These are two different tsubas, one showing a scene with two seated persons underneath a pine tree. The other tsuba has decorative open-work. Tsuba are popular collection items.



217: DZI BEAD

EUR 1,000 - 1,500

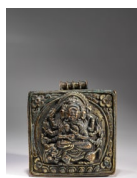
Agate Tibet / China Dimensions: Height 1,1 cm Wide 4,2 cm Depth 1,1 cm Weight: 12,5 grams Dzi bead with stripes and circle pattern threaded on a string.



218: VIRABHADRA

EUR 200 - 400

Bronze India , 18th century Dimensions: Height 20 cm Wide 11 cm Depth 2 cm Weight: 356 grams Virabhadra is a fierce form of Shiva and here depicted standing wide-legged in an alcove with fiery arch, the head of a cobra with diamond finial in the center. Two consorts are standing next to his legs, humbling their god. The auspicious hero is holding objects, probably weapons, in his four hands. He is wearing a conical headdress. Details of the face has been lost due to rub-off.



219: GAU DEPICTING TANTRIC GODDESS

EUR 300 - 500

Copper repousse with gilding Tibet , 19th century Dimensions: Height 11 cm Wide 10 cm Depth 3 cm without base Weight: 228 grams Small gau with wrathful tantric deity on a prostrate lion on a lotus flower, seated in dhyanasana pose, with eight arms and at least three faces. Holding various battle arms, showing mudras with the main hands, the three faces each of other nature. Backed by a mandorla and framed by ornamental flowers.



220: PAUL MAGER

EUR 100 - 150

Motiv: "Kirche" Signatur: signiert unten rechts GrÃ¼Ã¼e: 44 cm x 34 cm E.A.

Fine International Art Sale No. 18



221: FAN PAINTING ZHAO ZI JUN

EUR 800 - 1,000

Paper painted China , Ming Dynasty (1368-1644) Dimensions: Height 18cm Width 50 cm Paper fan painting on golden background with gold sprinkles, a river scenery with close-up of poppy flowers on the left side. To the right we see a colourful parrot sitting on a tall rock. With Chinese calligraphic writing and signature stamp in the center.



222: VASE

EUR 500 - 800

Blue and White Porcelain with bo gu carving China , Qing Dynasty Dimensions: Height 26 cm Wide 16 cm Depth 16 cm Weight: 1186 grams Beaker vase or gu vase with painting of the Eight Auspicious Symbols of Buddhism.



223: DREI SCHWARZ-WEISS VASEN

EUR 300 - 400

Konvolut on 3 Glas Vasen Maße: Höhe 9 cm bis 36 cm Gewicht: 3373 Gramm



224: VASE

EUR 300 - 500

Bronze Japan , 19th century Dimension: Height 22 cm Width 10 cm Depth 10 cm Weight: 728 grams Cylindrical Vase with smaller base widening at the top and again tapering to a bottle neck. The vase is covered in ornamental sprays and flowers, birds frolicking in between and large reserves with nature scenes.



225: SET OF CLOISONNE BOXES

EUR 900 - 1,000

Cloisonne China , 19th century Dimensions: Height 4 cm Width 6 cm Depth 6 cm Weight: 130 grams each Small, round cloisonne boxes in blue cloisonne with golden lines and colourful floral sprays and blossoms.



226: DEARS WITH WHEEL OF LIFE

EUR 300 - 500

Mountain Crystal Nepal , 19th century Dimensions: Height 9 cm - 16cm Weight: 1152 grams all Two prostrate deers with their gaze looking up to a dharmachakra on a pillar. The pillar has flower petals at the base, the center decorated with lines and beads while the bhavachakra consists of a flower petal trapped in a mandorla with ornamental sprays.



227: LANDSCAPE & FIGURES by UNKNOWN

EUR 300 - 500

Paper China Dimensions with frame: 187 x 70 cm Painting: 107 x 59 cm This elaborate-style painting depicts two different kinds of landscape & figures. In the near distance, people are reading or chatting in the pavilions, we can see artificial hills and peach trees in blossom; in the far distance, some people are chatting on horseback, moving forward slowly. The overall painting style is warm and cozy. The painter is unknown, but it writes "Zhang Zhi" in the lower right.

Fine International Art Sale No. 18



228: SEATED BUDDHA

EUR 8,000 - 10,000

Bronze Tibet , 14th century Dimensions: Height 14 cm Wide 11 cm Depth 8 cm Weight: 518 grams Seated Buddha on double reverse lotus throne with beaded rims showing the bhūmisparsa mudra, calling the earth to witness. The deity is dressed in a robe thrown over the left shoulder. Elongated earlobes frame the face. The eyes are closed in deep meditation, warding off every evil. The bottom is incised with a double vajra symbol.



229: STANDING BUDDHA

EUR 24,000 - 30,000

Bronze Tibet , 12th century Style Dimensions: Height 39,5 cm Width 16,5 cm Depth 6 cm Weight: 2783 grams Standing Buddha on lotus flower on square plinth backed by a pin-shaped open mandorla. The Buddha is standing in slight tribhanga pose with one hand raised in the gesture of welcoming and fearlessness. The other hand is hanging down on the side of his body holding a piece of his robe, the middle and ring finger are bent towards the thumb, index and small finger are stretched. The wide robe covers the whole body. The eyes are closed and a somber expression is on his face. Elongated earlobes frame the face. The back of the statue is kept simpler, the mandorla is flat at the back.



230: ELEVEN-HEADED AVALOKITESHVARA

EUR 1,500 - 2,500

Bronze China Dimensions: Height 28 cm Width 14 cm Depth 8 cm Weight: 1318 grams Statue of eleven-headed Avalokiteshvara Bodhisattva with eight arms standing on a double reverse lotus base with beaded rim. The eight arms represent the eight directions. The eleven heads are arranged in a pyramid with three rows, the last two heads placed singularly on top of each other, the lower one showing a fierce emanation and the top being a peaceful Amithaba Buddha. The nine lower heads have calm expressions and are wearing crowns. The deity is dressed in a flowy garment covering his legs, decorated with lots of jewellery and belts, a flowy scarf billowing around his legs. The arms are fanning out to the sides, two are joined together in front of the chest gesturing anjali mudra, the others forming various mudras. The deity's jewellery has stone inlay highlights. The statue is hollow.



231: TWO PLATES

EUR 700 - 900

Blue and White Porcelain China Qing Dynasty Dimensions: Height 2 x 11 cm & 4 x 17,5 cm Weight: 52 & 262 grams Two small plates in underglaze blue. The bigger plate shows abstract clouds with the magic ball and two dragons hovering in the air, the center of the inside decorated with one fearsome dragon amidst clouds, the magic ball hovering in front of him. The smaller plate shows three flowers with tendrils spread over the body, the inside is compartmented in eight reserves with alternating scenes of a farmer in the countryside and flowers. The rim decorated with a band of ornamental sprays, while the center is also painted with a single flower and leaves in a round reserve. Both plates have a mark on their base, the larger plate with Guangxu (1875-1908) mark and the other a mark showing the year of production.



232: MAKARA

EUR 600 - 800

Bronze Tibet or Nepal , 16th century Dimensions: Height 14 cm Wide 12 cm Depth 11 cm without base Weight: 1395 grams with base Makara head on rod, showing its' teeth with snout raising up and mouth agap. The fierce bulging eyes are complemented by a wild, fiery mane.



233: BUDDHA

EUR 400 - 600

Bronze China , Ming Dynasty (1368-1644) Dimensions: Height 16 cm Width 10 cm Depth 8 cm Weight: 903 grams Seated Buddha on lotus base with beaded rim, with legs crossed and dressed in a robe with ornamental brim draped over his left shoulder. The left hand is placed in the lap, the right hand lifted showing a mudra. The oval face has a friendly expression with smiling lips, thin nose and downcast eyes. The ears are slightly elongated. The head and ushnisha are covered in tiny curls, a diamond finial on the top.

Fine International Art Sale No. 18



234: CAVED CASKET

EUR 50 - 100

wood carved China or Japan Dimensions: Height 4 cm Width 9 cm Depth 6 cm Weight: 91 grams Small casket carved from a piece of wood in the shape of a peach or fruit with relief of a plant.



235: BUDDHA VAIROCANA

EUR 800 - 1,000

Bronze Tibet , 19th century Dimensions: Height 19,5 cm Wide 12 cm Depth 8 cm Weight: 1040 grams Seated Buddha Vairocana on double reverse lotus base with rim, dressed in cloth , wearing anklets, bracelets, armlets and several necklaces. The hands forming the dharmachakra mudra. His broad face looks peaceful and friendly with smiling lips, downcast eyes, a small urna on the forehead. The head adorned with an opulent, winged tiara. A thin scarf is billowing around his body. The statue is hollow.



236: SILK TEXTILE

EUR 200 - 300

Silk India 19th century Dimensions: Length approximately 600 cm x 100 cm Weight: 530 grams



237: CENSER

EUR 400 - 600

Bronze with Xuan de mark China , Qing Dynasty Dimensions: Height 6 cm Width 14 cm Depth 12 cm Weight: 622 grams Round low censer on circular expansive foot with two handles in the shape of makaras, a decorative band with flower and rounded key fret ornament and mystical animals in side view. The bottom carries a mark with year of production.



238: HARITI

EUR 300 - 500

Grey Schist Gandhara , 4th century Dimensions: Height 20 cm Wide 10 cm Depth 4 cm without base Weight: 1411 grams with base Hariti in Buddhist culture is believed to be the Mother of Children and Fertility and has similarities with the Greek goddess Tyche. Gandhara art was heavily influenced by greco-roman art which can be very well seen in the sculptures of that time. This deity is seated on a stool wearing a toga and a necklace with large circular pendants. Her wavy hair is done up underneath a flat-topped crown, her face is smiling. Her right hand is missing, most likely she was holding grapes or a pomegranate. Hariti's iconographic likeness to the Greek goddess Tyche via her wheat and flat topped crown further indicates the Greek influence on the region.



239: INCENSE BURNER WITH DRAGON MARK

EUR 400 - 600

Bronze China , 16th century Dimensions: Height 9 cm Width 13,5 cm Depth 12,5 cm Weight: 840 grams Three footed incense burner with two handles. A dragon inside and a mark at the bottom



240: GYANKAR BAJRACHARYA (1961-2023)

EUR 2,000 - 3,000

Nepal , 20th century Dimensions: 55 cm x 44 cm

Fine International Art Sale No. 18



241: SMALL STUPA

EUR 400 - 600

Bronze Nepal , 18th century Dimensions: Height 12 cm Wide 9 cm Depth 9 cm without base Weight: 327 grams Small bell-shaped stupa. The bottom decorated with a line of piles of jewels, followed by lotus petals, then the dome-shaped middle continued with the top consisting of discs with a finial.



242: CARL EMIL UPHOFF (1885-1971)

EUR 2,200 - 3,000

Material: Öl auf Leinwand Signatur: oben rechts signiert Größe: 57 cm x 79 cm Literatur: Thieme-Becker Motiv: Dame im schwarzen Kleid



243: BUDDHA

EUR 1,000 - 1,200

Bronze Kashmir , 10th century Dimensions: Height 10 cm Wide 6 cm Depth 4 cm Weight: 235 grams Kashmir bronze showing Buddha seated in dhyanasana on a double reverse lotus flower with larger petals on the bottom and smaller ones above. His right hand in varada mudra, his left upraised holding the hem of his pleated robe. The whole body is covered in a flowy robe, the oval face looking serene. A minimalist depiction of Buddha without any jewellery or other decoration.



244: FAN PAINTING DEPICTING A FAMILY AND A FARMER

EUR 250 - 500

Painting China Fan Dimension: 52,5 cm by 18,5 cm Fan painting showing a family of a man and a woman with their two children standing in nature between rocks talking to a farmer, who is holding a hoe and is tending to a ram lying on the grass. A text is written on the left handside.



245: SEATED BUDDHA

EUR 2,000 - 3,000

Malachit Pre-Khmer , 7th century Dimensions: Height 14 cm Width 9 cm Depth 5 cm Weight: 413 grams Seated in dhyanasana on a rectangular plinth, the hands in dhyanamudra, the face with downcast eyes below gently arched eyebrows, flanked by two elongated ears, the hair in tight curls, surmounted by an ushnisha. Left ear slightly broken. Extensive wear, some losses and cracks, traces of erosion, minor nicks. Very good condition considering the high age of this statue. Style of Angkor Borei, Ta Keo region of the Mekong Delta, 7th century. Angkor Borei was an important early center of Buddhism and Buddhist temple construction before the establishment of the Khmer Empire. The present figure is characteristic of Angkor Borei sculpture, as seen in the subtle protuberance of the ushnisha and the large snail-shell curls. Sculpture from this early period exhibits the naturalism and grace that echoes the treatment of the body in Gupta-period India, where ornamentation is minimized to emphasize the smooth volume of the form. Compare a related bronze figure of Buddha, dated 7th-8th century, in the collection of the Metropolitan Museum of Art, accession number 1981.462.2.



246: LACQUER CHEST

EUR 800 - 1,000

Wood and lacquer China , 19th century Dimensions: Height 18 cm Wide 28 cm Depth 19 cm Weight: 1067 grams Exquisite lacquer chest which can be separated into three parts, base with foot, box and lid. The box has six subdivisions and is placed inside the bases' frame. The lid then covers the box and reaches the foot. The lid is decorated with fine ornamental sprays surrounding larger flowers and butterflies swirling in the air. The box is plain while the base is decorated with single floral sprays.

Fine International Art Sale No. 18



247: MALEREI MIT LORIOT

EUR 100 - 200

signiert Rollo 2000 RÄ¼ckseitig beschriftet: FÄ¼r Claudia und Rainer "fÄ¼r 20m Ä¼bers Sofa hÄ¼ngen" Ach was , Rollo und Tina
MaÄ¼ße: 98cm x 68 cm



248: BHU DEVI

EUR 1,500 - 2,000

Bronze India , 17th century Dimensions: Height 42 cm Wide 16 cm Depth 11 cm Weight: 6200 grams Hindu goddess personification of the earth, standing on round base attached to square platform. Her left knee slightly bent, hip tilted to her right, dressed in striped garment fastened around her waist with a belt. Her right arm is hanging down beside her body, the left hand forming mudra in front of her chest. She has a benevolent smile on her face, large circular earrings decorate her head as well as a high, multi-tiered conical headdress with diamond finial.



249: DANCING GANESHA

EUR 1,200 - 1,500

Bronze Nepal , 19th century Dimensions: Height 31 cm Width 19 cm Depth 14 cm Weight: 2975grams Eight armed Ganesha standing on a round base with his right foot slightly hovering above the ground, his hip lifted to the left and eight arms fanning out in a circle showing various mudras. Dressed in short dhoti and adorned with beads and jewellery, the trunk curled slightly to his left. He is wearing a crown and a feather decoration, his forehead is showing the trishula a trident, a divine symbol, commonly used as one of the principal symbols in Hinduism. The name trishula ultimately derives from the Sanskrit word त्रिशूल (triśūla), from त्रि (tri-), meaning "three", and शूल (śūla), meaning "a sharp iron pin or stake", referring in this case to the weapon's three prong It is wielded by the god Shiva and is said to have been used to sever the original head of Ganesha.



250: PADMAPANI

EUR 200 - 400

Stone Nepal 19th century Dimensions: Height 28 cm Width 13 cm Depth 9 cm Weight: 2951 grams The Lotus Bearer standing on a lotus flower with beaded rim and backed by a pin-shaped aureole with flames. The Bodhisattva is dressed in a translucent robe with wide sleeves. He is showing the abhaya mudra with his right hand, the left hand is lowered and holding a script. Elongated earlobes frame the oval face, a tiara with a Buddha Amithaba effigy in the front is pressing down his hear on the forehead.



251: CRAP

EUR 100 - 150

Bronze Japan 19th century Dimensions: Height 3,5 cm Width 14 cm Depth 7 cm Weight: 178 grams Statue of a realistic crab with holes in the legs.



252: SITTING BUDDHA

EUR 500 - 800

Bronze Thailand 18th century Dimensions: Height 78 cm Wide 53 cm Depth 25 cm Weight: approx 25 Kg Buddha Shakyamuni seated on a lotus base in lotus position. He is showing the bhūmispharsa mudra, calling the earth to witness. His eyes are closed in a deep meditative state and the urna raises between the eyebrows.



253: JAIN WITH INSCRIPTIONS

EUR 800 - 1,000

Bronze India , 17th century Dimensions: Height 18 cm Wide 15 cm Depth 7 cm Weight: 4451 grams Jain seated in dhyanasana with his hands folded onto each other in the lap, on a thin base with an elephant the center and inscriptions. Dressed in a loincloth, a flower protrudes from the center of the chest. The earlobes are elongated and resting on two large beads on the shoulders. The eyes are made with colour creating a piercing gaze. Tiny dots cover head and ushnisha. The statue is sealed.

Fine International Art Sale No. 18



254: BLUE AND WHITE DOU

EUR 400 - 600

Porcelain China , 18th century Dimension: Height 11 cm Width 10 cm Depth 10 cm Weight: 319 grams Porcelain dou with expansive round foot and bulbous body with blue and white underglaze painting of celestial dragons frolicking in the sky with the magic pearl surrounded by ornamental clouds. A Chinese writing with the year of production on the body. The blue and white dragon-pattern DOU is mainly used to hold food, such as sauces and pickles. The outer mouth is decorated with flower leaf patterns, the abdomen is painted with cloud dragon patterns, and the bottom is decorated with lotus and circle dots. Upper abdomen horizontal write "Daming Wanli year" six-character regular script.



255: FOUR LOTUS SHAPED DISHES

EUR 800 - 1,000

Canton enamel China , 19th century Dimensions: Height 4 cm Wide 16 cm Depth 10 cm each Weight: 67 grams each Small dishes in the shape of a lotus petal with three circular reserves surrounded by colourful lotus flowers on blue background. The reserve in the center shows a large lotus blossom, the smaller reserves show landscapes. The bottom is painted with two red bats, symbols for good fortune.



256: SITTING MANJUSRI

EUR 400 - 600

Bronze China , Qing Dynasty (1644-1911) Dimensions: Height 8 cm Width 8 cm Depth 4 cm Weight: 289 grams Seated Buddha Manjusri on lion, whose head is gazing at the god. The Buddha is dressed in wavy robes, his feet are crossed at the ankles, the hands forming a mudra and holding a vessel. Manjusri's hair is done up in a bun, the oval face has elegant features, a slight smile plays the lips cornered by plump cheeks.



257: VIRABHADRA

EUR 800 - 1,000

Bronze India , 18th century Dimensions: Height 27 cm Wide 22 cm Depth 24 cm Weight: 4789 grams The Hindu god seated on a high lotus throne on a square expansive base with four loops on each corner, the incised petals of a lotus flower. Virabhadra is sitting with one foot drawn to his lap, the right leg is hanging down to the base. Dressed in a striped dhoti, fastened around the waist with a belt, the upper body wearing armor and jewellery. He has four arms, holding a trident, a sword, a spear and a ghanta bell. He is wearing a winged conical crown with lotus bud finial. Virabhadra is a warrior manifestation of Shiva.



258: MODERN BUDDHA

EUR 800 - 1,000

Wood with stones Mandalay Birma , about 1850 , Mandalay leafs Dimensions: Height 128 cm Wide 120 cm Depth 30 cm Weight: approx. 5,6 Kilograms Modern sculpture of Buddha. The shape of a seated, cross-legged Buddha is created by a metal wire. Gilded wooden wings are attached to the metal at height of the knees, arms and shoulders. The largest pair of wings is attached to the tiara. The head is adorned with a spiked tiara. The wooden artefacts are decorated with stones of various colour.



259: CHAMUNDA

EUR 3,000 - 5,000

Blackstone India , 13th century Dimensions: Height 65 cm Wide 40 cm Depth 13 cm without base Weight: 74,5 Kilograms with base She is a fearsome form of goddess Chandi and known as Goddess of War and Epidemics. Chamundi is sitting on a prostrate demon she has defeated, dressed in an ornamental dhoti and body adorned with various jewellery. She has eight arms holding various attributes like a skull cup, a sword, a trident, a hand-drum and a severed head. Her hands have claws and her fang teeth are exposed. The ribs of her torso are showing. Her matted hair is done up like a crown called jatamukuta. She is wearing a large garland of skulls.

Fine International Art Sale No. 18



260: CELADON LION

EUR 900 - 1,500

Porcelain China Dimensions: Height 16 cm Wide 10 cm Depth 11 cm Weight: 739 grams Porcelain figurine of a mystical lion sitting on its hind-legs on a thin surface, its right front resting on a magic ball. A chain with bell tied around the neck, the mane made of curly strands of hair. The mouth is agape exposing the fangs. Figurines like these were usually placed somewhere in pairs as guardians.



261: MAYA HOLDING A TREE BRANCH

EUR 400 - 600

Grey schist Gandhara 4th century Dimensions: Height 10,5 cm Wide 5 cm Depth 2 cm without base Weight: 241 grams with base Maya is the mother of the Buddha. She was a virgin at her wedding but she got pregnant similar to the Virgin Mary in Christianity. In a dream one night, Maya saw a white elephant, that told her that the Buddha would arrive soon; however, she was unaware that she was carrying him. When she gave birth she did not experience any pain, but she died only a few days after giving birth to the Buddha. This statue is made of grey schist. How Maya is depicted is fitting to the various descriptions of her. She was described as having a radiant energy like gold and eyes shining like precious gems. Maya is also seen as a fertility figure, she stands here in a yakshi-like pose.



262: OSKAR MULLEY (1891-1949) ZUGESCHRIEBEN

EUR 600 - 800

Signatur: rÄ¼ckseitig signiert GrÄ¼ße: 48 cm x 38 cm



263: KINNARI

EUR 300 - 500

Bronze India , 18th century Dimensions: Height 11 cm Width 3 cm Depth 4 cm Weight: 213 grams Kinnari is a creature from Buddhist and Hindu mythology taking the shape of half human and half bird. They often appear as pairs. This female kinnari is dressed in a dotted, long dhoti standing on a square base, both hands are missing. She is wearing a headdress and earrings and has a pointy, beak-like nose. Kinnaris are known as creatures of music, dance and poetry.



264: SECHS JAGDPOKALE MIT TABLETT

EUR 500 - 700

versilbert Maßße: Höhe 15 bis 26 cm Gesamtgewicht : 4560 Gramm Italy M/M im Stile von Gucci



265: DRAGON-SHAPED PENDANT WITH CIRRHUS CLOUD STRIPES

EUR 1,200 - 1,500

Jade China , The Warring States period (B.C.475-B.C.221) Dimensions: Height 16 cm Width 7 cm Depth 0,5 cm Weight: 102 grams Dragon-shaped jade pendant with grain design. The jade pendant is with light grey and brown mottles. A dragon is carved on both sides with the same design. With its mouth open and head turned back, the dragon is wholly covered with grain designs. There is a circular hole on its body. The styling of the ornament is particular to that of the dragon ornaments of the Warring States period.



266: VAJRA

EUR 400 - 600

Bronze Tibet , 15th century Dimensions: 14 cm by 3,5 cm Weight: 187 grams Nine-pronged vajra. The center is the rounded hub that represents the Dharmata. On each side are three rings from which arises an eight petalled lotus on each side. These eight petals represent the eight bodhisattvas. Above them are the nine pronges, an axial square prong in the center and eight outer curved ones. The final tip of the vajra of both ends is shaped like a four faceted jewel. It also represent the Mount Meru. One of the pronges is broken and a small fragment missing.

Fine International Art Sale No. 18



267: STANDING PADMAPANI

EUR 600 - 800

Bronze with silver eyes Tibet , 16th century Dimensions: Height 19 cm Wide 10 cm Depth 5 cm Weight: 660 grams Standing Bodhisattva on a small double-reverse lotus flower with beaded rim backed by an open-work mandorla with ornamental flames. Padmapani is standing slightly bent at the waist dressed in a long dhoti with decorative pattern and fastened around waist by a belt with floral pattern. His right hand is lowered showing the varada mudra, the other hand raised in front of the chest with ring finger touching the thumb. The belly and chest look soft, the broad face has some features, expression calm and loving with downcast eyes and a raised urna. A winged tiara decorates the hair done up in a high bun. Large flowers are growing on each side of the Bodhisattva.



268: CENSER

EUR 400 - 600

Bronze with gilding Japan , 19th century Dimension: Height 11 cm Width 10 cm Depth 10 cm Weight: 650 grams Intricately designed censer on smaller, circular foot with lotus petals, the round body shaped like a step at the top with key fretdecor and the lid shaped like a hat with broad brim and a lotus bud as knob. The censer is decorated with ornamental clouds and celestial dragons frolicking with the magic pearl in between them. The bottom bears a mark.



269: BUDDHA

EUR 1,200 - 1,500

Bronze Nepal 15th century Dimensions: Height 9,5 cm Width 7,5 cm Depth 5 cm Weight: 313 grams Seated Buddha on double reverse lotus throne showing the bhumi-sparsa mudra, dressed in a simple robe covering his left shoulder, the end of the cloth spreading out underneath the crossed ankles. Elongated earlobes frame the broad, smiling face showing the meditative state of the Buddha. A diamond on top of the protuberance, the urna lightly incised on the forehead. The statue is sealed with a double vajra symbol on the bottom.



270: TWO CUPS

EUR 50 - 80

Pottery glazed China 15th century or later Dimensions: Height 3,5 and 4,5 cm Diameter 8,5 and 10,5 cm Weight: 245 grams both Two Cups of various size in brown and yellow glaze covering the cup from top to lower half, exposing the ceramic at the bottom.



271: STANDING BUDDHA

EUR 1,200 - 1,500

Bronze Gandhara , 4th century Dimensions: Height 13 cm Width 7 cm Depth 4 cm without base Weight: 453 grams with base The historical Buddha is depicted with his right hand raised in the fear-allaying gesture, the left hand holding the edge of his robe that covers both shoulders. He has a large head with large almond-shaped eyes, one lower than the other, thin pursed lips, a broad nose, a V-shaped hairline, no visible urna on his forehead. Early greco-buddhist sculptures of Shakyamuni often portray him in a rigid pose, with short legs and squarish feet, his long wavy hair gathered in a loose bun.

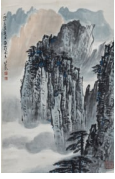


272: BUDDHA

EUR 1,000 - 1,500

Bronze Kashmir , 8th century or later Dimensions: Height 14,5 cm Width 9 cm Depth 5 cm Weight: 740 grams Buddha seated with legs crossed on a small square cushion, showing the abhaya mudra, gesture of protection and fearlessness with his right hand, the left hand is resting on the knee holding a hand drum. He is dressed in a simple robe with brim draped over his left shoulder. The smiling face is framed by elongated earlobes, a drop-shaped urna incised on the forehead. The hair and ushisha separated by a fine hairline. A small noose can be found on the back.

Fine International Art Sale No. 18



273: WEI ZI XI (1915-2002)

EUR 200 - 400

Paper Dimensions with frame: 190 x 60 cm Painting: 70 x 44 cm Wei Zixi is one of the main representatives of the New Jinling School of Painting. He has profound traditional skills in landscape painting and figure painting, and upholds the principle of "extending one hand to life and the other hand to tradition". This mountain painting was created in May of 1983, Nanjing.



274: SO SUK KO

EUR 2,000 - 3,000

Oil on Canvas Hawaii 1994 Dimensions: 60 cm x 48 cm Incheon-born artist So Suk Song Ko joined the Korean Artists Association of Hawaii in 1990. As vice-president of KAAH, she oversaw the Korean Children's Art Competition in 1997 and steered KAAH from 1998 through 2005 as its president. Through her efforts, KAAH started international art exchange exhibitions between Incheon and Hawaii. Following the celebration of the centennial of Korean immigration to America, Mrs. Ko was instrumental in establishing a sister-city relationship between Incheon Metropolitan City and the City and County of Honolulu. She was appointed by the Incheon government as an Overseas Honorary International Advisor in 2003. Under her guidance, artists from Hawaii and Incheon have steadfastly maintained an exchange exhibition program. Through her efforts, the name of the city's Pawaa Neighborhood Park was changed to Pawaa In-Ha Park in commemoration of the historical relationship between Incheon and Hawaii.



275: PORCELAIN DISH WITH CRANES

EUR 600 - 800

Porcelain with mark China , 19th century Dimensions: Height 4 cm Wide 24 cm Depth 24 cm Weight: 470 grams Porcelain plate with golden rim, the well decorated with painting of a rugged pine tree on rocky grass. Two red-crowned cranes standing on each side of the tree and two red bats are hovering above the crane. Cranes are a symbol of longevity, immortality, wisdom, the red bat stands for good fortune. The pine tree depicts longevity and endurance.



276: RED BOWL

EUR 400 - 600

Porcelain China , Qing Dynasty Dimension: Heigh 7 cm Wide 14 cm Depth 14 cm Weight: 202 grams Elegant bowl on small circular foot in red colour on the outside, inside white with plant painting in the center. Mark with year of production on the bottom.



277: VISHNU WITH CONSORTS

EUR 600 - 800

Bronze India , 12th century Dimensions: Height 26 cm Wide 13 cm Depth 8 cm without base Weight: 2164 grams with base Statue of Vishnu with two consorts on a t-shaped pedestal with two aodrants kneeling at the base, backed by an open-work mandorla with flames, the victory banner of the Eight Auspicious Symbols of Buddhism in the center top. Vishnu dressed in a short dhoti, the sacred thread running down his chest, a garland draping from his elbows. He has four arms, one is missing form the elbow, one showing the varada mudra, one holding the dharma chakra and another the kaumodaki. He is smiling, wearing ear pendants, a conical crown and the head surrounded by a mandorla. His consorts are smaller and each bending at the waist creating an elegant curve, holding instrument, therefor Saraswati, and lotus flowers, therefor Lakshmi. The back of the statue is flat.



278: HEAD OF VISHNU

EUR 1,500 - 2,000

Blackstone India , 12th century Pala or later Dimensions: Height 37 cm Width 24 cm Depth 18 cm without base Weight: 17,5 Kg with base Head of Hindu deity Vishnu attached to a black base. Focus of the head lies on the opulent conical crown created with lots of detail. Curly strands of hair are visible underneath the crown which is decorated with garlands and beads. The center of the crown is adorned with a repetitive pattern of erect lions intertwined with a mandorla. Vishnu is wearing beaded earrings.

Fine International Art Sale No. 18



279: A FLAMBE GLAZED MEIPING

EUR 1,000 - 1,200

Pottery glazed China , Qing Dynasty Dimensions: Height 26 cm Wide 14 cm Depth 14 cm Weight: 1355 grams A large Chinese Qing dynasty flambe glazed meiping vase, the high, rounded shoulder supporting a short, waisted neck, with a rolled lip, the lower body narrowing towards a biscuit foot enclosing a ochre-colored base, the copper red glaze with blue stripes.



280: SARASAVATI WITH BRAHMA

EUR 400 - 600

Bronze India , 19th century Dimensions: Height 17 cm Wide 12 cm Depth 5 cm Weight: 1147 grams This bronze shows Sarasvati as the main figure accompanied by the seated, three-headed deity Brahma and standing Vishnu. The group is placed on a t-shaped throne on feet, each standing on a smaller lotus base or throne. To the front of the throne is a peacock. The group is backed by a fiery aureole with a kirtimukha at the top sticking its tongue out. Four-armed Sarasvati is dancing and playing her instrument the sitar, smiling in ecstatic movement. Brahma is seated with one leg pendant with four arms and three visible faces, holding a conch shell and forming a mudra. Vishnu is standing with his left hand resting on the handle of his club and his other palm facing to the front, abhaya mudra. This scene emanates a festive ceremony with three of the most venerated deities in Hinduism. The backside is flat.



281: JUMADI BHUTA MASK

EUR 800 - 1,000

Bronze India , 18th century Dimensions: Height 40 cm Wide 30 cm Depth 10 cm without base Weight: 5638 grams with base Mask of Jumadi, a ferocious form of mother goddess Devi probably stemming from South India, Karnataka. Moustaches can be found on male and female bhuta masks, and Jumadi is also considered half-male half-female. Under her chin is a collar-like extension reaching to the flower earrings topped by a tripple-cobra-head. The mouth is grinning widely from side to side with two fangs at the corners, the eyes are wide open with two holes and bushy eyebrows. A third eye with a star incision sits on the forehead. There is a row of spikes close to the face, and on top of these, the crown is surmounted by nine cobra hoods. Bhuta masks were worn by impersonators for ceremonies or worshipped.



282: PAIR OF CLOISONNE VASES

EUR 3,000 - 4,000

Cloisonne China , Qing Dynasty about 1850 Dimensions: Height 40 cm Wide 27 cm Depth 15 cm Weight: 2539 grams each Two vases of extraordinary shape with two handles on each side. The vase is designed with red peonies, green leaves, butterflies and lotus flowers. Bands of key fret designs interrupt the ornamental pattern. The center part is decorated with a white beast face.



283: PAUL MAGER

EUR 100 - 200

Signatur: signiert unten rechts Motiv: Popelsdorferallee GrÃ¶Ã¼e: 44 cm x 35 cm E.A.



284: BUNDLE OF SMALL OBJECTS

EUR 100 - 200

Porcelain and wood China 1950's Bundle of four small objects, a small tea-pot in blue-and-white underglaze, a baluster-shaped vase with painting of a Chinese scholar, a small container and a plaquet of porcelain with painting of a small child in red clothes on a bike with Chinese writing.



285: BUDDHA OR ADORANT

EUR 300 - 400

Grey Schist Gandhara 4th century Dimensions: Height 10 cm Wide 5 cm Depth 2 cm without base Weight 306 grams with base Adorant kneeling and holding a square vessel.

Fine International Art Sale No. 18



286: MIRROR - NACHSCHAUEN

EUR 100 - 200

China , 19th century Dimensions: Height 2 cm Diameter 18 cm Weight: 713 grams Mirror with circular decoration surrounded by sun-shaped spikes followed by decorative bands. One band contains Chinese characters.



287: A VERY RARE WHITE TARA

EUR 2,000 - 3,000

Bronze with Silver inlays Tibet 13th century Dimensions: Height 10 cm Width 6 cm Weight: 222 grams The deity exquisitely cast in the round, seated in vajrasana with the upper body curving elegantly, her right arm resting on her right knee with the hand in charity giving varada mudra, the left hand raised with thumb and middle finger touching, adorned in a simple dhoti and elaborate beaded jewellery, the serene face with a gentle smile. She can be distinguished by the eyes on her palms and feet and the third eye on the forehead. Dressed in a simple gown fastened around her waist by a belt, wearing bracelets, armlets, necklace and ear pendants, a three-spiked, winged tiara enclosing her high chignon. Her eyes are downcast and lips smiling slightly and mysteriously. The White Tara stands for compassion, long life, healing and serenity. The statue is sealed



288: WATER-POT

EUR 80 - 100

Blue glazed Pottery China 19th century Dimensions: Height 8 cm Width 8,5 cm Depth 8,5 cm Weight: 189 grams Water-pot of bulbous shape with blue and white underglaze painting of flowers and sprays. A lotus flower painted around the opening of the vase.



289: RUDOLF HERZSPRUNG (GEB. 1904)

EUR 150 - 300

Aquarell Größe: 60 cm x 47 cm Signiert: rechts unten, dat. (19)58 Motiv: Stadtansicht Hannover



290: SIGNATUR VON A.R. PENCK (1939 - 2017)

EUR 300 - 500

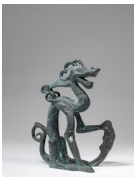
Rückseitig beschriftet: AR. PENCK "Piktogramm" Original (Unikat) 500,-



291: SEATED GANESHA

EUR 300 - 500

Silver repousse India , 19th century Dimensions: Height 9 cm Wide 9 cm Depth 6,5 cm Weight: 138 grams Ganesha seated on a flat throne, his vehicle the mouse to his left. The Hindu deity has his legs crossed , dressed in a wide robe with brim. His large belly and chest are exposed, a robe with decorative brim covering his shoulders. The large belly represents the entire universe called brahmanda. A necklace with pendant is resting on his belly, the sacred thread running across it. He has four arms, one is holding sweets, his curled trunk reaching for it. The two raised fists are clenched, a small hole therein indicates a missing attribute, possibly his weapons. A large, conical headdress decorates his head.



292: DRAGON

EUR 300 - 500

Bronze China 20th century Dimension: Height 19 cm Width 14 cm Depth 6 cm Weight: 1256 grams Elegant, modern statue of a mystical dragon seated on its hind legs, the neck extending in a tight s-shape, one front leg lifted. The mouth is wide open.

Fine International Art Sale No. 18



293: LARGE STUPA

EUR 3,000 - 4,000

Bronze Tibet , 13th century Dimensions: Height 35 cm Wide 16 cm Depth 16 cm Weight: 3130 grams Stupa with double reverse lotus base and beaded rims. The high dome is followed by a square intersection, the thirteen discs stemming from a lotus flower. The towering parasol has tassels with stone inlay of which some are still remaining, some missing. The top of the stupa is build by a large closed lotus flower bud. The stupa bronze is sealed at the bottom.



294: NARASIMHA

EUR 200 - 300

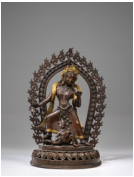
Bronze India , 19th century Dimensions: Height 12 cm Wide 6 cm Depth 5 cm Weight: 593 grams Small statue of Narasimha, God of Protection, seated on the coils of a snake and covered by a canopy formed by the five heads of serpent Shesha, who is one of Vishnu's mount. Narasimha is also an avatar of Vishnu. Narasimha is depicted as a human body with six arms and the torso of a man but the head of a lion. He is holding the same attributes as Vishnu, an array of weapons and religious artefacts. Two hands are sinking deep into the opened chest of the asura Hiranyakashipu disembowling him.



295: BLUE AND WHITE JARDINIÃˆRE

EUR 400 - 600

blue and white porcelain China , Qing Dynasty (1644 - 1912) Dimension: Heigh 18 cm Wide 21 cm Depth 21 cm Weight: 2229 grams Of hexagonal form, each side finely painted, depicting Cranes , within a decorative frame. Several breaks and cracks, repaired.



296: DURGA

EUR 1,200 - 1,500

Bronze Nepal , 18th century Dimensions: Height 31 cm Wide 21 cm Depth 10 cm Weight: 3301 grams Durga standing wide legged with her right knee bent on a lotus flower backed by a flaming aureole with skull band. Below her we see a kneeling consort holding a skull cup. Durga is holding a kartika or crescent-shaped knife and a kapala or skull cup. A shawl is billowing around her shoulders and winding down underneath her elbows. Her eyes are directed at the skull cup, with smiling face and gentle gaze. She is wearing an elabore crown with skulls, her hair done up in a bun.



297: STANDING WARRIOR

EUR 400 - 600

Bronze China , 19th century Dimension: Height 30 cm Width 13 cm Depth 9 cm Weight: 3067grams Chinese mythical warrior standing on rock, dressed in an armour showing a fierce beast face and pointy boots, a thin scarf billowing around his body. His hands are held above each other as if holding a spear. He has a goat beard and the hair is done up in a high bun.



298: DANCING GANESHA

EUR 1,000 - 2,000

Bronze India , 18th century Dimensions: Height 90 cm Wide 50 cm Depth 30 cm Weight: 25,6 Kilograms Ganesha's mount, the mouse, is standing on a lotus throne attached to flat surface. The mouse is wearing a saddle with ornamental pattern and necklace. On top of her Ganesha is dancing with his six arms fanning out to the sides holding attributes, like the trident, the noose, the battle axe, sweets and broken tusk. He is wearing a short, striped dhoti and anklets. The snake is wrapped around his big belly. With one hand he is showing the abhaya mudra. His head is decorated with beaded chains and a conical headdress.



299: STANDING BUDDHA WITH CONSORTS

EUR 800 - 1,000

Bronze Kashmir , 12th century Dimensions: Height 11 cm Width 7 cm Depth 3 cm without base Weight: 235 grams Statue of Buddha flanked by two consorts, each standing on a lotus flower on a throne supported by three lions. Buddha in the center is wearing a translucent flowy robe, he is showing the abhaya mudra with his right hand while he seems to be holding a flower in his left hand. His head is surrounded by an aureole with spiked center. The two consorts are wearing long dressed, they are both slightly bending outwards from their hips. They are also backed by mandorlas. The back of the statue is flat with patina.

Fine International Art Sale No. 18



300: KRISHNA PALYING THE FLUTE

EUR 400 - 600

Bronze India , 18th century Dimensions: Height 27 cm Wide 12 cm Depth 8 cm Weight: 2270 grams Krishna is standing on a drum-shaped lotus flower on a flat, square surface. He is wearing sandals, his right leg is crossed over the left, touching the ground only with the toes. He is wearing a short dhoti wrapped around the waist with a belt. His upper body is adorned with jewellery, the hands are both raised as if holding a flute to his smiling mouth. He has a cheerful look on his face and is wearing a high, conical headdress. Krishna's flute symbolizes his time spent herding cows.



301: IVAN ALEXANDROVICH SHEDOV (GEB. 1917)

EUR 150 - 200

Material: Öl auf Leinwand Rückseitig Künstlerstempel Größe: 47 cm x 33 cm Motiv: Winterlandschaft



302: JOSEPH BEUYS SIGNATUR MIT ZEICHNUNG

EUR 100 - 150

Tusche auf Papier ,gerahmt Maße: 25 cm x 21 cm Signiert mittig: Joseph Beuys Privatsammlung, Deutschland



303: STANDING BUDDHA

EUR 300 - 500

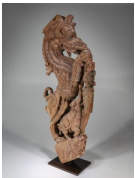
Stone Gandhara , 4th century Dimensions: Height 6 cm Wide 3,5 cm Depth 1,5 cm Weight: 42 grams Small stone figure of Buddha Gautama standing on a small base with beaded rim. He is wearing a flowy robe, his right hand lifted in abhaya mudra, left arm hanging down on the side. The face looks calm, strands of his hair are done up in a high bun. He is backed by a mandorla which is partly missing at the very top. The back of the stone is flat.



304: PORCELAIN DISH

EUR 200 - 300

porcelain China 19th century Dimensions: Height 5,5 cm Diameter 19 cm Weight: 829 grams Dish with red-brownish painting of floral patterns and sprays all over, a key fret border on the inside of the lip, outside border is painted with floral sprays and leaves.



305: YALI MYTHICAL CREATURE

EUR 1,000 - 1,500

Wood India 19th century Dimensions: Height 65 cm Width 7 cm Depth 24 cm Weight: 4699 grams with base The yali is said to be a guardian creature with head and the body of a lion, the trunk and the tusks of an elephant and sometimes equine features. This yali is raised while standing on its hind legs, the tail curled to the side, a smaller elephant underneath its belly. This wooden statue was probably part of an architectural structure.



306: LARGE VISHNU WITH SRI DEVI AND BHU DEVI

EUR 6,000 - 8,000

Bronze India , 18th century Dimensions: Height 36 cm to 56 cm Weight: 23 Kilograms all three Set of three statues. Vishnu is standing on a lotus flower attached to a base on four feet, an elaborate mandorla at the back. The front of the base has three tiny holes. The lower part of the mandorla is created by pillars with ornamental decorations, while the upper arch is extending from the mouths of makaras, the center topped by Kirtimukha, a swallowing fierce monster with bulging eyes. Vishnu has four arms showing mudras and holding the dharma wheel and conch shell. He is dressed in an ornamental dhoti and his whole body is adorned with elaborate jewellery, a winged crown on his head. He is smiling benevolently. The two consorts are standing on round bases on a square one with two tiny holes in the front. The consorts have the same position, in slight tribhanga pose and holding a lotus flower in one hand. They are both wearing decorated long dhotis and body jewellery, a winged high crown. They are also smiling welcomingly. This set is made with great detail.

Fine International Art Sale No. 18



307: TWO BOWLS

EUR 400 - 600

Blue and White Porcelain China , Qing Dynasty Dimensions: Height 6 x 12 cm & 5,5 x 15 cm Weight: 124 & 237grams Two small bowls in underglaze blue. One with simple pattern decoration on the outside, the inside painted with four reserves depicting floral decorations. The center is painted with a forest scenery and a fawn standing underneath a tree. The other bowl shows floral tendrils and sprays on the outside. The inside is mainly white with ornamental flowers decorating the side, the center painted with a wheel-like decorative element.



308: GE XIANG LAN (1904-1964)

EUR 200 - 400

Watercolour on Paper China , 20th century Dimensions: 52,5 cm x 37,5 cm Painting of two dogs, one black and one white with black ears wearing a leather collar. Both are lying on patches of grass close to a lake or sea, two birds hovering in the sky. Chinese writing with red seal stamp in the right top corner.



309: GLASSPIEL "FISCH" wahrscheinlich RBA Schweden

EUR 400 - 500

Maße: Höhe 66 cm Breite 26 cm Tiefe 20 cm Gewicht: 9667 grams RBA Schweden wurde 1967 von Rune Birger Axelsson gegründet und heute leitet sein Sohn Peter Axelsson das Unternehmen. Das Unternehmen konzentriert sich auf Kunstglas, Porzellan, Heimtextilien und Küchenprodukte. Viele kennen RBA nach den beliebten Porzellantieren, dem Weihnachtsgeschirr von Rolf Lidberg und Glasfiguren in verschiedenen Ausführungen.



310: BUDDHA

EUR 300 - 500

Bronze Thailand , 19th century Dimensions: Height 13 cm Width 7 cm Depth 3 cm Weight: 639 grams Seated Buddha with legs crossed on a square throne with backrest. The front of the throne shows a reserve with several praying Buddhas or devotees flanking a ritual object. The backrest shows some mystical creatures in profile. The Buddha is forming a mudra, the dharmachakra mudra, and is smiling peacefully. His head is surrounded by a circular aureole with pattern and beaded rims, two apsaras hovering above his shoulders.



311: STANDING VAJRAPANI

EUR 1,200 - 1,500

Bronze with traces of gold China , 12 - 13th century Dali Kingdom Dimensions: Height 12 cm Wide 7 cm Depth 3 cm Weight : 292 grams This sculpture depicts wrathful Vajrapani brandishing a dagger with a vajra handle in his right hand and making a wrathful gesture (tarjani mudra) with the left. He is adorned with snakes.



312: STANDING TARA

EUR 1,200 - 1,500

Bronze with Silver eyes Tibet 16th century Dimensions: Height 29 cm Width 15 cm Depth 9 cm Weight: 3246grams Tara is both female Bodhisattva or Buddha, here standing on a square surface in a long dhoti with elaborate ornamental pattern, fastened around the waist with a belt. A flower garland is hanging down from her elbow creases. She is holding a vessel in her left hand, the lifted hand forming a mudra and holding prayer beads. Her bare upper body adorned with beaded necklaces, she is wearing floral earrings and a three-spiked tiara.



313: NARASIMHA

EUR 600 - 800

Bronze India 18th century Dimensions: Height 13 cm Width 12 cm Depth 8 cm Weight: 1495 grams This image shows Narasimha, the man-lion, with his consort. The image has been cast using the lost-wax process and has then been refined with chiselling and engraving. Narasimha is shown seated and with four arms, and a dramatic face with bulging eyes, bulging cheeks and a gaping mouth. The consort here is Lakshmi (also known as Sri Devi). She sits on Narasimha's left knee. His lower left hand rests on her hip and her right hand is placed on the small of his back for balance. Narasimha also holds a chakra wheel and a conch in his upper pair of arms; these being symbols of Vishnu. His front right hand is in vitarka mudra. He is seated on a round throne comprising the coiled, scaly body of a naga, that is atop a two-tiered square dais that has been engraved with lotus petal motifs. Both Narasimha and Lakshmi have elegant and detailed dhoti garments and jewellery, and tall, conical headdresses. Narasimha is one of the eight avatars of Vishnu. The deity's name derives from two words: 'nara' meaning 'man' and 'simha' meaning 'lion'. Vishnu assumed the appearance of a half-man half-beast to overcome a demon king who could not be killed by either a

Fine International Art Sale No. 18

man or a beast. The lion characteristics as manifested in the deity's face are fierceness, bravery and independence. Representations of Narasimha often are found in stone relief in temples in Tamil Nadu, where this avatar of Vishnu is popularly portrayed. Narasimha is flanked by Hanuman and Garuda both standing on a lotus base next to the center sculptures.



314: LARGE MANDORLA

EUR 3,000 - 5,000

Bronze India , 18th century Dimensions: Height 160 cm Wide 90 cm Depth 9 cm Weight: 86 Kilograms with base Large mandorla gate of elaborate work. The bottom part is created by ornamental pillars supported by two Yalis. The yali is said to be a guardian creature with head and the body of a lion, the trunk and the tusks of an elephant and sometimes equine features, carrying vessels on their snouts. A smaller mystical creature sits on top of a cornice with its tongue stretched out. The upper half of the mandorla starts with bird-like creatures with feathery tails on each side and their beaks opened wide and exposing sharp teeth. The gate is three-banded, two of open-work floral repetitions and a beaded band in the middle. The outer edge is decorated with ornamental flames. The top center of the mandorla is decorated with the head of a bull-like creature with horns, bulging eyes, small ears and large nose called kirtimukha.



315: LARGE GUANYIN ON LION

EUR 1,200 - 1,500

Wood repainted China 15th century Dimensions: Height 60 cm Width 45 cm Depth 20 cm without base Weight: 3480 grams Guanyin, the Bodhisattva of Mercy, seated casually on a prostrate lion, one leg on top of the animal's back, one leg standing firmly on the ground in front. Supporting himself with his left hand on the lion's neck while the other arm is resting leisurely on his knee. Dressed in flowy robes, wearing bracelets, earrings and necklace, a tiara encircles the high chignon. The oval face has small, elegant lips, a slim nose, the eyes are downcast and eyebrows raised in a high arch. The urna inlay is missing, a circular indent remaining on the forehead. Some cracks and damages due to age



316: OFFERING VESSEL IN FORM OF A MYSTICAL BEAST

EUR 1,000 - 1,500

Bronze China 5th century BC Dimensions: Height 23 cm Width 29 cm Depth 13 cm Weight: 3125 grams Vessel in the shape of a mystical animal on four legs, a long tail, small ears and a beak. The body is decorated with incised patterns of feathers while the tail seems to have scales. The handle on the back of the creature has the shape of an elongated cat. The lid has a knob and can be removed.



317: GUANDI | GOD OF WAR

EUR 800 - 1,000

Bronze China , Ming Dynasty (1368 - 1644) Dimension: Height 27 cm Wide 15 cm Depth 11 cm Weight: 2780 grams Seated on a throne with four feet, one leg supported on a mystical creature. He is dressed in full armour with incorporated grim faces of beasts, a scarf is billowing around his body. His right hand is placed on his thigh in a fist, his left hand is placed in front of the chest showing a hand sign. The warrior has a smile on his face but his eyes are downcast, a long goat beard reaching his chest. The ears are slightly elongated, his long hair floating down his back.



318: HEAD OF BUDDA

EUR 600 - 800

Grey schist Gandhara , 4th century Dimensions: Height 18 cm Wide 10 cm Depth 12 cm without base Weight: 3005 grams with base Head of Buddha attached to black metal base. The head has an oval shape with slightly elongated earlobes. The eyes are downcast, the indent urna in the center of the forehead. The wavy hair is done up in a bun.



319: BHU DEVI

EUR 200 - 300

Bronze India 16th century Dimensions: Height 7 cm Width 4 cm Depth 2,5 cm Weight: 59 grams She holds in her right hand a lotus stem with the bud still closed, and she does not wear a breast band – these two attributes being identifying attributes allowing the image's differentiation from Sri Devi. She is dressed in a long, striped dhoti fastened around the waist and her body is tilted to the left from the hip, creating an elegant curve while her left arm is hanging down on the side of her body. She is smiling welcomingly.

Fine International Art Sale No. 18



320: HANUMAN PUPPET

EUR 1,200 - 1,500

Wood painted India , 19th century Dimensions: Height 75 cm Wide 24 cm Depth 15 cm Weight: 6064 grams with base Puppet with several joints attached to a metal base. Hanuman, devotee of Rama usually depicted half-man, half-monkey, here with the body of a human and the face of a monkey. He is adorned with a beaded necklace, simple anklets, armbands and bracelets. His neat hair is ending at his shoulders in a wave.



321: GANESHA PUPPET

EUR 1,200 - 1,500

Wood painted India , 19th century Dimensions: Height 70 cm Wide 24 cm Depth 15 cm Weight: 5194 grams with base A puppet with several joints in the form of Ganesha, Remover of Obstacles and son of Shiva and Parvati, shown without crown or majestic features, only wearing a necklace on his chest, simple anklets, armbands and bracelets. He has small ears, the eyes are open and both tusks seem to be intact. The trunk is curled to his left in a small circle.



322: JAPANESE MASK MAKER

EUR 1,500 - 2,000

Bronze Japan , 19th century Meiji era Dimensions: Height 16 cm Wide 15 cm Depth 13 cm Weight: 1358 grams Bronze statue of a mask maker seated with legs crossed and dressed in an opulent kimono with a detailed pattern showing faces of demons and bearded men, monsters and creatures. His robe shows ornamental pattern of clouds and mystical creatures and is fastened in the front of the chest with a knotted cord. The man is bald with a wrinkled forehead, he is doing a grimace with opened mouth and squinted eyes as if evaluating his piece of work. In his hands he is holding a mask of a demon or gruesome creature and a carving tool. The mask is loose.



323: ZHANG DA QIAN (1899-1983)

EUR 400 - 600

Watercolour on paper China , 20th century Dimensions: 174 cm x 68 cm Zhang da qian is famous for his green landscape painting, this is one of his works. In this painting, a scholar sitting on a stone and watching in the wind, with his pants rolled up. Sitting figure, stone, mountain, water, bridge, every detail shows the painter's skilled painting.



324: BROWN GLAZED VESSEL

EUR 50 - 80

glazed pottery China 19th century Dimensions: Height 14 cm Width 11 cm Depth 11 cm Weight: 437 grams Container or jug with round body, a slim neck and high lip, two handles reaching from the top of the neck to the body. The dish is of a shiny and dark brown colour.



325: HERBERT FINSTER (1930 - 2000)

EUR 600 - 800

Mischtechnik auf Leinwand , gerahmt signiert H. Finster 84 Motiv: "das Paar" Maße: 34 cm x 30 cm



326: UNBEKANNTER KÄSTLER

EUR 150 - 200

Tusche auf Papier circa 1930 - 1950 Größe: 51 cm x 40 cm Motiv: Selbstbildnis

Fine International Art Sale No. 18



327: STANDING HANUMAN

EUR 500 - 700

Bronze India , 16th century Dimensions: Height 18 cm Wide 6 cm Depth 5 cm without base Weight: 761 grams without base Hanuman, devotee of Rama, standing tall on a round platform attached to a four-legged base. His two hands are joined in front of his chest in anjali mudra. The deity is wearing a long striped dhoti tied around his waist with a belt, a conical headdress on his head and elongated earlobes framing his face. Forming a kind of aureole around his head with his long tail ending in a small coil. The statue's details show some rub-off.



328: BUDDHA

EUR 600 - 800

Bronze Kashmir , 12th century Dimensions: Height 9 cm Wide 5 cm Depth 3 cm Weight: 96 grams Statue of a seated Buddha on a lotus flower on rectangular base with inscription at the front. On top of the flower is a throne supported by two lions and a flower petal in the center. The Buddha is wrapped in flowy garments, he is forming the gesture of supreme generosity, the left arm folded towards him, wearing a thicker garment with concentric folds . His face has a welcoming expression with large eyes, the urna sits between the eyebrows and his curly hair is done up in a high bun. There are two metal nooses at the back of the statue.



329: STANDING BUDDHA

EUR 400 - 600

Clay Pre-Angkor , 8th century Dimensions: Height 45 cm Wide 18 cm Depth 10 cm without base Weight: 5511 grams with base Large statue of a standing Buddha dressed in a loincloth. The legs are missing from under the knee and the statue is attached to a square surface. The arms were bent at the elbows but are missing from there. The broad face is smiling, the earlobes are slightly elongated. The hair and ushnisha covered in curls. The statue shows heavy patina and rub-off on the face.



330: VAIROCANA

EUR 6,000 - 8,000

Bronze West-Tibet , 15th century Dimensions: Height 27,5 cm Wide 17 cm Depth 12,5 cm Weight: 954 grams The cosmic Buddha seated cross-legged on a double reverse lotus base with beaded rim. His legs are crossed, dressed in a garment with beaded brim and fastened around the waist with a belt. The hands are forming the dharmachakra mudra, sign of teaching. His upper body is adorned with opulent jewellery with stone inlay. The face is smiling widely, the eyes are downcast and a raised urna on the forehead. He is wearing large, circular earrings. A winged crown pressed down on the hair done up in a chignon topped by a flaming diamond finial. The backside of the statue shows no detailed decoration but is kept simple.



331: SCHOLAR

EUR 400 - 600

Bronze China , Ming Dynasty (1368 -1644) Dimensions: Height 15 cm Wide 6 cm Depth 5 cm Weight: 810 grams Bronze statue of a Chinese man dressed in a robe with belly exposed. The man seems to be a scholar, he is bald and gazing towards the ground. Around his shoulders he is carrying a rope with coins.



332: DANCING SHIVA

EUR 2,000 - 3,000

Bronze India , 19th century Dimensions: Height 83 cm Wide 55 cm Depth 33 cm Weight: 37 kilograms Shiva in his cosmic dance symbolizing the process of creation, destruction and preservation of the universe, called Nataraja. The base consists of a t-shaped base with lotus petals at the bottom and top. An elephant's head protrudes from the center, the trunk reaching to the front of the base. Shiva is standing on the elephant's forehead with his right leg, his hips are squared to the side and the left knee bent in midair, the foot rotating inwards. Dressed in short pants with ornamental pattern and adorned with elaborate jewellery. His body is twisted to the front and eight arms are spreading out in a circle holding ritual objects or instruments. He is surrounded by an aureole of fires. His face has a prominent nose and the eyes are wide open. A crescent moon, serpent and other symbols can be identified on his headdress or halo. Shiva is flanked by two adorants or devotees who have four arms, two raised in devotion while to others are holding castanets.

Fine International Art Sale No. 18



333: SEATED GANESHA

EUR 8,000 - 10,000

Bronze North India , 12th century Pala Dynasty Dimensions: Height 16 cm Wide 7 cm Depth 6 cm Weight: 404 grams Ganesha in front of flaming aureole with treasure vase at the top, seated on a double reverse lotus flower on square expansive base. One leg is pendant, standing on his vahana the mouse, the other foot is drawn close to the thigh. He has four arms, the ones in the front are lowered showing a ball of sweets and a round object, either a fruit or his broken tusk, the two arms at the back are raised and holding his battle arms, a trident and a mace. Ganesha's trunk is curled up to his left shoulder, he is wearing a high headdress.



334: REN BO NIAN (1840-1895) "BIRD STANDING ON THE PINE TREE "

EUR 200 - 400

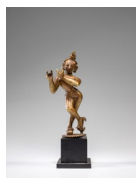
Paper China , 19th century Dimensions with frame: 328 x 60 cm Painting: 176 x 47 cm Mr. Ren is a painter of flowers & birds. A single bird is standing on a barren tree trunk, gazing at a peach blossom nearby. The bird has a light blue crown, next to the pink peach blossom, and appears lovely and cute.



335: BLUE AND WHITE BRUSH POT

EUR 1,000 - 1,200

Porcelain China Qing Dynasty Dimensions: Height 13 cm Width 10 cm Depth 10 cm Weight: 635 grams Porcelain cylindrical brush pot with Chinese script in blue writing all over.



336: KRISHNA PLAYING THE FLUTE

EUR 500 - 700

Bronze India , 18th century Dimensions: Height 20 cm Wide 10 cm Depth 6 cm without base Weight: 1906 grams with base Young Krishna standing on a round flat round flower attached to a square plinth. He is standing on one foot, his right leg crossed over the left and standing on its foot tip. The hip is tilted to one side creating an elegant curve in his body. The hands are lifted like holding a flute to his mouth. The face is smiling widely and has a prominent nose. The body is dressed only in a belt and wearing wooden toe sandals. The hair is done up in a two-stepped bun with finial.



337: ORIGINAL WOODBLOCK PRINT BY CLIFTON KARHU

EUR 1,000 - 2,000

Japan 1975 No 19/100 "Kyoto Winter" Dimensions: 65 cm x 47 cm Original signed woodblock print "Kyoto Winter", by Clifton Karhu, 1975. Original, signed woodblock print of exceptional size, by the highly popular American woodblock print artist Clifton Karhu (1927-2007). Born in Minnesota, Karhu moved to Japan in the 1950s, taking up a career in art later in the decade.



338: SERGEI SHOMIN (GEB. 1913)

EUR 200 - 400

Ä–I auf Leinwand rÄ¼ckseitig signiert, betitelt und 1953 datiert GrÄ¼Ä¼e: 80 cm x 65 cm Motiv: Landschaft mit BÄ¼umen



339: GAU DEPICTING BUDDHA SHAKYAMUNI

EUR 500 - 700

Copper repousse and Bronze Tibet 18th century , revival Style of the 12th century Dimensions: Height 8 cm Wide 6 cm Depth 5 cm Weight: 334 grams Buddha standing on a double lotus base, 2 adorants kneeling beside him. Images of the Buddha from the Himalayan region of Tibet and Nepal are characterized by graceful postures and elegant modeling. The palm of the Buddha's right hand is normally marked with the lotus flower and displays the gesture of charity.

Fine International Art Sale No. 18



340: RED CUP

EUR 300 - 500

Porcelain China , Qing Dynasty Dimensions: Height 7 cm Wide 9 cm Depth 9 cm Weight: 160 grams Small porcelain cup on foot with flared lip and red colour on the outside, white on the inside and year of production written on the bottom.



341: LARGE JAGUAR MOUNTED ON MARBLE BASE

EUR 700 - 1,000

Marble and chrome plated with mark: Milo - France Quality Dimensions: Height 35 cm Wide 60 cm Depth 14 cm without base Weight: approximately 23,7 Kg with base Miguel Fernando Lopez (1955 - present), better known under the pseudonym of Milo, is a Portuguese artist who was born in 1955 in Lisbon. Milo attended the Academy of Arts there and studied Arts and Sculpting. He specialized in modern abstract art as well as nude study sculptures and animal sculptures. In recent years, Milo's popularity has reached an international level. With this sculpture Milo created a great and quite realistic image of a jumping panther. The panther is one of the endangered animals and its species can be found in the list of the IUCN (International Union for Conservation of Nature and Natural Resources).



342: TIBETAND LIGHTER

EUR 50 - 100

Silver and Leather with iron strip Tibet 19th century Dimensions: Height 9 cm Width 13 cm Depth 2 cm Weight: 176 grams This item has spent a lifetime being used for the purpose of its creation with the original artist/user. Signs of this life lived heartily may be present on the piece in the form of stains, thread loss, loose threads, holes, tears, color run and other imperfections.



343: HEAD OF A BUDDHA

EUR 1,200 - 1,500

White marble China 6th century Northern Qi Dimensions: Height 19 cm Width 9 cm Depth 9 cm with base Weight: 1748 grams with base Head of a Buddha attached to rod, oval face with fleshy lips slightly smiling, broad cheeks and downcast eyes with high, arched eyebrows only slightly chiseled. The hair and ushnisha separated from the forehead by a fine hairline, earlobes slightly elongated.



344: BUDDHA SHAKYAMUNI

EUR 800 - 1,200

Bronze Tibet , 17th century Dimensions: Height 22 cm Wide 15 cm Depth 11 cm Weight: 1435 grams Finely cast with eyes downcast in meditative expression, seated in dhyanasana atop a double-lotus pedestal, with the right hand reaching down towards the ground in bhūmisparśha mudra, the left hand held gently in the lap holding a bowl, dressed in long flowing robes detailed with draping folds, with a prominent ushnisha formed with tightly coiled curls. The figure of Shakyamuni is one of the most widely represented subjects in Buddhist art. Modelled in the earth-touching gesture or bhūmisparśha mudra, the Buddha recalls the moment of his Enlightenment, in which he called upon the earth as his witness of his battle against the temptations and attacks of Mara and his demons. The serene countenance conveyed by the gentle facial features, with the eyes depicted half closed in meditation and the long earlobes symbolising long life, follows the standard rules for the depiction of Buddha to ensure the deity was shown embodying maximum power.



345: NACH LUDWIG KNAUS (1829 - 1910) A PLAYFUL BURDEN

EUR 400 - 600

Kupferstich handkoloriert , gerahmt Maße: 37 cm x 26 cm

Fine International Art Sale No. 18



346: SMALL BUDDHA FROM A STUPA

EUR 200 - 300

Bronze with Tourquoise Tibet , 14th century Dimensions: Height 5 cm Wide 3 cm Depth 2 cm Weight: 39 grams Small seated Buddha in calling the earth to witness pose, legs crossed and right fingers touching the earth while the other hand is placed in the lap with palm facing to the sky. Dressed in a simple robe, elongated earlobes frame the round face, a blue stone inlay as urna. The curly hair is topped by a blue stone inlay finial.



347: RAMA AND SITA

EUR 300 - 500

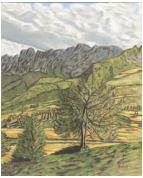
Bronze India , 18th century Dimensions: Height 13 cm + 16,5 cm Wide 7,5 cm + 8 cm Depth 3 cm + 4 cm Weight: 526 + 770 grams Two statues of the Hindu gods Rama and his wife Sita. Rama is standing on a square plinth with geomatric incisions on the sides, dressed in a long dhoti fastened around the hip with a belt. His hands are placed at his hip, he is wearing bracelets, armllets, a necklace and large earrings. He has a slim waist and broad chest, his facial expression is attentive with eyes open, a conical headdress covers his hair. Sita is also standing in the same manner on a smaller square plinth, dressed in a flowy dhoti wrapped around her hips with a belt. She is also wearing bracelets, decorative armllets and several necklaces with pendants. Her ears are decorated with creoles and her hair is held back by a headband, fastened together as a bun at the back. Her gaze is welcoming with a slight smile. The back of the statues is created with the same detail as the front.



348: PAIR OF CLOISONNE BOWLS WITH LID

EUR 1,000 - 1,500

Cloisonne China , 19th century Dimensions: Height 12 cm Width 15 cm Depth 13 cm Weight: 838 grams each Bowls on three long feet with lion-face-shaped knobs with ring. The main colour is a dark blue, the lid and bowl are designed with colourful branches, leaves and flowers. Birds fly among the plants. The lid's knob is designed with a flared lip.



349: IPSEN 75

EUR 200 - 300

Ä-I auf Leinwand signiert: unten rechts , Ipsen 75 MaÄÿe: 60 cm x 49 cm



350: GEORGE GROSZ (1893 - 1959)

EUR 150 - 200

Stammtischstudien aus: Ecce Homo Offsetlithographie auf Velin. 1919 20 cm x 27 cm Blatt 10 der Folge "Ecce Homo"



351: TIBETAN LAMA

EUR 300 - 500

Bronze gilt Tibet , 20th century Dimension: Height 13 cm Width 10 cm Depth 7 cm Weight: 435 grams Depictions of spiritual masters in Tibetan Buddhism show mostly deceased lamas who acquire divine features only after their death. They were made for commemorative purposes for the disciples. Representations were usually individualized and stereotypical, however they can bear small details which makes them distinguishable apart from a dedicatory inscriptions. This lama is seated cross-legged on rectangular cushions with decorative patterns on the side. His hands are gently lying on his knees, he is wearing flowy robes and a pleated cloak, a high headdress covers his presumably bald head. He has a broad, distinctive face and is smiling lightly. The statue is hollow.

Fine International Art Sale No. 18



352: INDRA

EUR 900 - 1,200

Bronze Nepal , 18th century Dimensions: Height 26 cm Wide 14 cm Depth 8 cm Weight: 2332 grams with base Indra seated with one leg pendant from the plinth, standing on a lotus flower, the other leg drawn close to her body. She has four arms, one is holding a skull cup, the other forming a mudra with thumb touching ring finger and two arms at the back are lifted holding ritual objects. She is dressed in a loincloth, body adorned with some jewellery. Her eyes have a piercing gaze, large hoops hang down from her ears. She is wearing a tiara on her head.



353: BODHISATTVA AVALOKITESHVARA

EUR 300 - 500

Bronze Indonesia , 18th century ? Dimension: Height 15 cm Width 9 cm Depth 7 cm Weight: 374 grams Seated deity, probably Bodhisattva Avalokiteshvara recognizable by the lotus flower he is holding in his hand. Seated with one knee lifted and one lying on the round lotus base, dressed in a short garment and adorned with jewellery and the sacred thread. His right elbow is resting on the right knee and the hand showing a mudra. The left hand is showing a mudra as well and holding the stem of a lotus flower extending to his left shoulder. The head is bent to his right shoulder and he has a friendly facial expression, the urna on the forehead. The head adorned with a high, winged crown with a central Buddha effigy, encircling the hairbun. His hair is running down in strands at the back. The statue is hollow.



354: XU SAN GENG (1826-1890)

EUR 200 - 400

Calligraphy ink on Paper China , 19th century Dimensions: 220cm x 60 cm Vertical calligraphy work with mainly text and a calligraphic drawing on the lower half.



355: PLATE WITH GOLD DRAGON

EUR 50 - 80

Porcelain Japan 20th century Dimensions: Height 2 cm Diameter 18,5 cm Weight: 257 grams Plate with deep blue colour on the surface and a golden lip, decorated with a black and golden celestial dragon soaring in the sky, the magic ball and abstract clouds hovering around him. The backside is plain white with two characters "Nihon".



356: PAIR OF APSARAS

EUR 800 - 1,000

Copper repousse Nepal , 18th century Dimensions: 35 cm by 53 cm and 38 by 40 cm without base Weight: 3200 grams with base Copper repousse quarters with apsaras, celestial beings in human form, often flanking deities or gods in the top corners. Here they are hovering in the sky amid ornamental clouds. They are dressed in robes and pointy hats with floral pattern. The apsaras are wearing sandals and jewellery. Both their wings are spread out wide. and each of them is holding a garland in their hands.

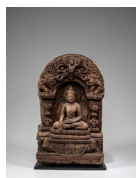


357: AVALOKITESHVARA

EUR 2,000 - 3,000

Bronze with silver eyes Swat Valley , 10th century or later Dimensions: Height 17 cm Wide 10 cm Depth 7 cm Weight: 1020 grams Avalokiteshvara in a serene mood, his right elbow supported by the raised knee, the forefinger pointing to his temple, his left hand placed on his thigh and holding the stem of a large lotus flower. The lower body is dressed in a striped dhoti, the sacred thread runs along the naked upper body also adorned with armlets, bracelets and a beaded necklace. The oval face has a calm expression, the eyes downcast and framed by elongated earlobes with earrings. The hair is done up in a bun enclosed by a crown with an effigy of Buddha Amithaba in the center. The matted hair running down in strands can be seen from the back, an eyelet attached to the back.

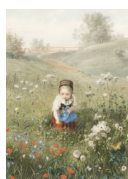
Fine International Art Sale No. 18



358: BUDDHA ON THRONE SURROUNDED BY TORANA

EUR 1,000 - 2,000

Sandstone with Puja traces Nepal , 19th century Dimensions: Height 64 cm Wide 38 cm Depth 13 cm without base Weight: 49,5 Kilograms with base Buddha seated on a double reverse lotus base on a throne with decorative carpet in the front and two lion heads. The Buddha is backed by a mandorla and showing the bhumisphasa mudra. A robe is covering his left shoulder, his eyes are downcast and he is smiling lightly in deep meditation. Elongated earlobes with holes frame his face and tiny curls cover the head and conical ushnisha. The Buddha is covered by a torana, an arched gateway with decorative pillars. The arch is decorated with ornamental sprays and two makara faces lifting from the pillars. Garuda is rearing up in the center with arms and wings spread widely. Two adorants flank him and are covered by serpent heads. The back of the stone is flat.



359: LUDWIG KNAUS (1829 - 1919) MÄDCHEN IN BLUMENWIESE

EUR 400 - 600

Kupferstich handkoloriert signiert: unten links Knaus 1868 Maße: 34 cm x 24 cm



360: DZI BEAD

EUR 1,300 - 1,500

Agate Dimensions: Height 1,3 cm Width 3,1 cm Depth 1,3 cm Weight: 8,6 grams Dzi bead with geometric pattern and dot in the center.



361: STANDING ADORANT

EUR 600 - 800

Bronze Nepal , 18th century Dimensions: Height 14 cm Wide 7 cm Depth 4 cm without base Weight: 720 grams with base Female adorant standing on a slim surface attached to a base. She is wearing a pleated robe, her hands are joined in front of the chest in anjali mudra. She is wearing a necklace and circular floral ear pendants.



362: LION PAPERWEIGHT

EUR 200 - 400

Bronze China , 19th century Dimensions: Height 11 cm Wide 13 cm Depth 8 cm Weight: 1021 grams Paperweight in the shape of a lion seated on his hindlegs, the head turned towards the side with its mouth wide open. The lion has a curly red mane, the wide nose and eyes are large, the ears dropping down on the sides giving it a cute and joyful look. The tail is clinging to the back of the leg.



363: AVALOKITESHVARA

EUR 1,000 - 1,200

Bronze China or Tibet , 18th century Dimensions: Height 19 cm Width 12 cm Depth 7 cm Weight: 805 grams Eighteen armed Bodhisattva Avalokiteshvara seated on a throne with reserve at the front side with open work ornaments encasing a circular stone inlay. The Bodhisattva is seated cross-legged on a lotus flower above key fret base. Two main hands are joined in the front of the chest, two hands resting on the lap holding objects, another pair is raised forming mudras while the rest of the arms are fanning out in a circle with hands holding various attributes. The Bodhisattva has downcast eyes and is wearing a large crown with the Buddha Amithaba effigy in the center, he is backed by a flaming mandorla. The back of the throne is decorated with the Endless Knot.



364: ALEXANDER FRENZ (1861-1941)

EUR 3,000 - 4,000

Ä–l auf Leinwand Größe: 72 cm x 48 cm Signiert: links unten Literatur: Thieme-Becker , BÄ©nÄ©zit Motiv: RosenmÄ©dchen

Fine International Art Sale No. 18



365: THANGKA DEPICTING RARE FORM OF AVALOKITESHVARA

EUR 2,000 - 3,000

Distemper on cloth Tibet , 18th century Dimensions: Height 74 cm Width 61 cm The painting shows seated Avalokiteshvara with eight arms fanning out in a circle holding various attributes and showing mudras, his legs are crossed. He has multiple faces stacked in three levels, they are backed by a mandorla, his whole body is surrounded by an aureole. He is seated on a colourful lotus flower on a throne decorated with carpets. The Bodhisattva is framed in a circle by various other deities either seated on lotus thrones, backed by aureoles and forming mudras. The central figure is flanked by two standing adorants. Two dancing wrathful emanations are hovering in both top corners, shrouded by clouds.



366: HEAD OF BUDDHA

EUR 500 - 800

Grey Schist Gandhara , 4th century Dimensions: Height 20 cm Wide 15 cm Depth 15 cm without base Weight: 5673 grams with base Head of Buddha attached to metal base, a good example of Gandhara art with its influence from Greek art. The earlobes are partly missing. A curly moustache on the upper lip, an urna between the slim eyebrows and eyes downcast. The wavy hair is tightened into a bun like a lying eight-shape with a band in the front of the head, wavy hair tied around the band alongside the head.



367: DIE ALTE

EUR 150 - 300

signiert unten rechts datiert (19) 79 Holzschnitt Handabzug mit Stockflecken auf Pergament Maß: 60 cm x 40 cm gekauft von: Galerie Elfriede Wirtner , Baden Baden



368: JAIN SHRINE

EUR 600 - 800

Bronze with Silver India , 14th century (dated with inscription on the back) Dimensions: Height 18 cm Width 10 cm Depth 6 cm Weight: 781 grams Jain Shrine with open-work throne base with one central Jain and two smaller ones on the corner. The main Jain is seated on another open-work throne supported by two seated adorants and two lions. The Jain is seated in dhyanasana with his hands folded in his lap. His round face has a piercing gaze with silver inlay eyes, elongated earlobes and a small ushnisha. He is backed by an open-work gate filled with standing and sitting devotees paying their tribute. On top there are two elephants raising their trunks in worship. The top of the gate is decorated with the vase of great treasure. The Jain is covered by a circular canopy. The backside of the statue is flat with Sanskrit inscription all over.



369: CHAKRASAMVARA PAINTING

EUR 1,500 - 2,000

Nepal , 20th century Dimensions: 60 cm x 40 cm The blue-skinned figure with four faces and twelve arms holding various attributes, embracing Vajravahri as he strides over two prone figures on a lotus base, both backed by a flaming mandala Chakrasamvara is one of the most popular deities in Tantric Buddhism. In his primary hands he holds a vajra and bell, his topmost hands hold an elephant skin stretched out behind him, his proper right hands hold a drum, axe trident and curved knife, and his proper left hands hold a khatvanga staff, a lasso, a blood-filled skullcup and the four-faced head of Brahma. Each of his heads wears a skull crown, and he also is adorned with bone ornaments and a garland of freshly severed heads. Around his waist is tied a tiger-skin. Vajravahri also holds a curved knife, skullcap and a garland, this time of skulls, and wears a bone apron around her waist. At top left is Vajradhara in embrace, with the Indian Mahasiddha, Ghantapa, At bottom right is Shadbhuja Mahakala. Ghantapa was a monk at Nalanda monastery who was greatly praised for his learning. He eventually was initiated into the Chakrasamvara mandala practice and left the monastery to pursue further meditation in the jungles.



370: DRAGON

EUR 500 - 700

Bronze China , Ming Dynasty or earlier Dimensions: Height 16 cm Width 27 cm Depth 6 cm Weight: 1200 grams Bronze statue of a mystical dragon on its feet, one front leg stretched out to the front, the long neck rising up in a s-shape with mouth agape and bulging eyes.

Fine International Art Sale No. 18



371: QIAN SONG YAN (1899 - 1985)

EUR 200 - 400

Watercolour on paper China , 20th century Dimensions: 75 cm x 52 cm



372: SARA ANHAYA | 2004 CAMP OF DREAMS

EUR 200 - 300

Mischtechnik auf Leinwand signiert unten links: Anhaya MaÅe: 135 cm x 52 cm R¼ckseitig beschriftet: Sara Anhaya 2004 "Camp of Dreams"



373: STANDING BUDDHA

EUR 600 - 800

Bronze Cambodia , 12th century Dimensions: Height 24 cm Wide 10 cm Depth 5 cm without base Weight: 4831 grams with base Exquisite statue of a Khmer Buddha attached to a marbled, square base with expansive bottom. The Buddha is standing with both hands showing the abhaya mudra, gesture of fearlessness and protection. The Buddha is wearing a translucent robe with ornamental brim, an elaborate, broad belt fastened around the waist. The chest is adorned with a necklace of pointy pendants, bracelets and armlets and ear pendants further decorate the body. The face has large, distinctive features like fleshy lips and triangle-shaped eyes. A drop-shaped urna on the forehead. The Buddha is wearing a Cambodian headdress as crown, the braided hair can be seen at the back. Provenance: MuseÅ Chateaux Bourgone, Collection Label No. 397



374: STANDING GANESHA

EUR 200 - 400

Stone India 19th century Dimensions: Height 12 cm Width 6 cm Depth 4 cm without base Weight: 478 grams with base Stone statue attached to plinth. Ganesha, remover of obstacles, standing on a lotus flower, his right ankle crossing over his left leg and supporting on his toes. His body is creating an s-curve, making him look almost as if he is dancing. His vehicle, the mouse, is standing erected to his right, looking at him. The deity has four arms holding various attributes, his body is clothed in festive clothes and jewellery. He is reaching to his left hand, which is holding a cup of sweets., with his trunk. He has small ears and a circular aureole surrounds his head.



375: LARGE STANDING VISHNU ON GARUDA

EUR 2,000 - 3,000

Bronze gilt with stones Nepal , 17th century Dimensions: Height 31 cm Wide 12 cm Depth 10 cm Weight: 2584 grams Large statue of Vishnu, God of Preservation, standing on top of his mount Garuda, the King of Birds and Kites. Vishnu is standing with four arms, dressed in transparent robes and adorne with lots of jewellery with blue stone inlay. A beaded aureole surrounds him with an additional halo around his head. In his four hands he is holding a flower, a conch shell, the discus and sword. Garuda is depicted as a bird with the torso and head of a man with four arms. Two arms are joined in prayer position while two other arms are spread along his wings. He has bulging eyes, a serious expression and a red stone inlay urna, large circular pendants adorn his ears and his hair is done up in a bun.



376: DALI BUDDHA

EUR 600 - 800

Bronze China , 20th century Dimension: Height 26 cm Width 16 cm Depth 8 cm Weight: 2133 grams Standing wrathful Buddha with skull garland and skull necklace, four arms holding a vajra and a daruma hand drum, two hands forming mudras. The deity has fleshy lips, bulging eyes, a broad nose and a beard. A scarf is billowing around his head and torso and drooping down to the ground. During the reign of Dali Duan, the Azhalimi religion was very prosperous, and it was integrated with the local Bai nationality and other minorities in Yunnan, forming a strong local spirit system. The Great Black God has been revered by the Buddhist believers in Yunnan, because of his religious attributes.

Fine International Art Sale No. 18



377: JUN KILN TEA CUP

EUR 400 - 600

Glazed pottery China , 19th century Dimension: Height 5 cm Width 9 cm Depth 9 cm Weight: 120 grams Small tea cup in azure colour and nebulous glaze.



378: DZI BEAD

EUR 1,400 - 1,600

Agate Dimensions: Height 1 cm Wide 3,2 cm Depth 1 cm Weight: 8,1 grams Dzi beads are made of agate and this piece is thread on a leather string with two additional small golden pearls.



379: MANGER-SHAPED CENSER

EUR 500 - 600

Bronze with two ears and Xuande mark China , Qing Dynasty Dimensions: Height 6,5 cm Width 13 cm Depth 8 cm Weight: 929 grams Rectangular censer with two handles on the short sides. The Xuande mark can be found on the bottom.



380: FAN DEPICTING FROG ON LOTUS LEAF

EUR 250 - 500

Paper China Fan Dimension: 52,5 cm by 18,5 cm Fan painting depicting a frog leaping onto a petal floating on the water.



381: TWO GUANYIN BODHISATTVAS

EUR 1,500 - 2,000

White marble China Northern Qi 6th century Dimensions: Height 19 cm Width 18 cm Depth 8 cm Weight: 4257 grams Two seated Guanyin on a high throne with decoration in the center. They are both seated with legs crossed, the hands forming abhaya and varada mudra. Dressed in flowy robes. The aureole surrounding them is partly broken. There is an inscription on the back.



382: WOOD BOWL

EUR 50 - 70

wood carved Japan or China , 19th century Dimensions: Height 5 cm Diameter 13 cm Weight: 56 grams Small bowl with foot and carving on the outside showing characters, objects and symbols surrounded by decorative sprays.



383: LEATHER DRAGON

EUR 600 - 800

Leather painted Tibet 18th century Dimensions: Height 37 cm Width 28 cm Depth 0,5 cm without base Weight: 921 grams with stand Celestial dragon made from leather attached to a metal rod. The dragon is holding two balls in its claws, the body rising up and mouth agap with fiery, bulging eyes. The body is of red colour with black dots as scales.

Fine International Art Sale No. 18



384: BUDDHA

EUR 2,000 - 3,000

Bronze Swat Valley , 12th century Dimensions: Height 10 cm Wide cm Depth 6 cm Weight: 142 grams Another distinctive statue made in the Swat Valley style, showing Buddha seated cross-legged in a wide, flowy robe covering the whole body. The base is a rather large lotus flower with big petals. The hands are formed to varada mudra. The eyes are downcast, earlobes elongated and hair and ushnisha covered in small curls.



385: SHIVA & PARVATI

EUR 5,000 - 6,000

Bronze India 19th century Dimensions: Height 40 cm Wide 44 cm Depth 22 cm Weight: 25 Kg Bronze with Shiva and his consort Parvati seated casually with one leg pendant on a rectangular throne, side to side. Shiva has four arms, two holding a battle axe and a small deer, one showing abhaya mudra, one hovering above his left knee. He is wearing a short dhoti tied around his waist by a decorative belt. His chest and upper body are adorned with jewellery and the sacred thread. He is wearing circular ear pendants and a high conical headdress with ornaments. Parvati is dressed in a long, striped dhoti and her upper body is also adorned with jewellery. She is wearing ear pendants and a high headdress topped by diamond finial. At the back we see their strands of braided hair hanging down on their backs. The throne has four holes, two at the front and two at the back.



386: SEATED RAMA

EUR 400 - 600

Bronze India 16th century Dimensions: Height 9 cm Width 5 cm Depth 5 cm Weight: 214 grams Rama seated on a throne on a square lotus base with expansive foot, his left foot is resting on his right knee, dressed in a long dhoti. His right hand is raised showing a mudra, the other arm is resting on his knee in a relaxed manner. He is wearing a high, conical headdress with lotus bud finial.



387: SMALL CUP

EUR 400 - 600

Porcelain China , Qing Dynasty Dimensions: Height 6 cm Wide 8,5 cm Depth 8,5 cm Weight: 356 grams Delicate small cup with craquelure glaze in grey colour on small foot.



388: CHINESE SILKWORK

EUR 1,500 - 2,000

China , 18th century Dimensions: Height 91 cm x Wide 79 cm Silk work in picture frame with geometrical pattern as background interrupted by circular ornamental shapes with a geometrical design including two swastikas in the center.



389: BUDDHA

EUR 600 - 800

Bronze Nepal , 16th century Dimensions: Height 9,5 cm Width 7,5 cm Depth 5,5 cm Weight: 332 grams Buddha seated cross-legged on a lotus throne in open-work with beaded rims. He is gesturing the bhumispharsa mudra, his lower body dressed in a flowy robe wrapped around the waist. He is wearing bracelets and a jewellery. His oval face is framed by elongated earlobes, the expression welcoming and friendly with a smile, a drop-shaped urna on the forehead. His head is backed by a mandorla. The back of the statue is flat, a broken eyelet in the center.



390: SILVER POT

EUR 3,000 - 3,500

Silver Mongolia , 19th century Dimensions: Height 19 cm Wide 16 cm Depth 13 cm Weight: 747 grams Elaborate silver pot with bulbous body on slightly expansive round foot with handle in the shape of a dragon. The pot is decorated with ornamental sprays, mythical dragons stand in side view with a magic pearl in their center. The lid is secured by a chain.

Fine International Art Sale No. 18



391: PAUL MAGER

EUR 100 - 200

Signatur: signiert unten rechts und 6/75 Motiv: Godesberg GrÃ¶Ã¶e: 45 cm x 34 cm



392: BUDDHA VAJRADHARA

EUR 500 - 800

Bronze Tibet , 19th century Dimensions: Height 21 cm Width 14 cm Depth 10 cm Weight: 1241 grams Seated Vajradhara, the ultimate primordial Buddha, with legs crossed on a double-reverse lotus throne with beaded rims, dressed in a long robe with stone inlay decoration, the pleats fanning out underneath the ankles. Vajradhara is easily identified by the crossed hands holding a vajra and ghanta. His torso is decorated with bracelets, armbands and an opulent necklace, all highlighted with stone inlay of different colour. The solemn face with downcast eyes convey a meditative state. He is wearing a winged tiara and large, circular flower earrings. From the back his two-tiered high chignon is visible topped by a diamond finial. The statue is sealed.



393: STANDING PADMAPANI

EUR 2,000 - 3,000

Bronze Nepal , 18th century Dimensions: Height 38 cm by 11 cm without base Weight: 4648 grams with base Standing Lotus-Bearer in slight tribhanga pose, attached to wooden base. The lower body is dressed in a thin cloth tied around the waist by a belt and fastened around the legs by a shawl. The cloth shows a delicately incised pattern of ornamental sprays and flowers. The chest is adorned with a necklace and the sacred thread, a broad bracelet and decorative armband on the arms. The Bodhisattva's right hand lifted in abhaya mudra, the left holding the stem of the lotus flower. The face is calm and friendly-looking with downcast eyes and fine lips and nose. The curly hair is enclosed by a three-pointed tiara with small wings and an effigy of Buddha Amithaba at the center. From the back we can see the thin hairlines on the back of the head and the high chignon topped by diamond finial.



394: ROARING LION

EUR 800 - 1,000

Bronze China , Liao Dynasty Dimensions: Height 11,5 cm Width 6,5 cm Depth 6,5 cm Weight: 288 grams A lion seated on its hind legs in an imposing posture with its mouth agape, roaring. The tail is tucked up on its back. Such lions were often positioned in pairs at entrances or gates.



395: SILVER KAPALA WITH EIGHT AUSPICIOUS SYMBOLS

EUR 1,200 - 1,500

Silver with gilding Tibet , 19th century Dimensions: Height 22 cm Wide 17cm Depth 16 cm Weight: 838grams The skull cup is a ritual implement used in Buddhist as well as Hindu Tantra. Hindu deities are often depicted holding a kapala and a kartika, a crescent-shaped knife. This kapala has a triangular foot with beaded rim and ornamental sprays in relief. Three triangle-shaped petals extend from the base and support the egg-shaped lower bottom which has a smooth surface and a line of skulls and beads at the rim. The lid consists of a smaller egg-shaped dome with a flat lip decorated with incised floral sprays. The domed body is decorated with a key fret design at the bottom, floral ornaments surrounding the Eight Auspicious Symbols of Buddhism. A five-pronged vajra half stemming from a small lotus flower in the center of the lid forms the handle or knob. The object can be separated in three parts.



396: VAIROCANA

EUR 400 - 600

Bronze China , 8th century Dimensions: Height 9 cm Width 5 cm Depth 3,5 cm Weight: 148 grams Buddha seated on double reverse lotus base, the bottom petals larger than the top petals. Legs are crossed, the hands showing the vajra mudra. The whole body is draped in a flowy robe. The head is slightly tilted towards the sky, with a calm expression and slightly elongated earlobes. The head and ushnisha covered by tiny curls.

Fine International Art Sale No. 18



397: KANG XI WU CAI LARGE PLATE

EUR 1,900 - 2,500

Porcelain China Kang Xi (1661 - 1722) Dimensions: Height 7 cm Width 42 cm Depth 42 cm Weight: 2722 grams The plate is painted with a detailed scene underneath a pavilion at court. We see the emperor seated at his throne surrounded by servants, observing a dancer in front of him. Other spectators are gathered in the garden. The bottom reads " Great Qing Kangxi Year" and the plate's body is decorated with three flower tendrils.



398: PADMAPANI

EUR 700 - 900

Wood with cold gilding China , 18th century Dimensions: Height 20 cm Wide 12 cm Depth 11 cm Weight: 777 grams "He who holds a lotus flower", seated on a double reverse lotus flower with beaded rims, one leg drawn close to his thigh, the other stepping on a small lotus petal extending from the front of the throne. Dressed in elaborate garment with intricate ornamental details, adorned with jewellery and a scarf running over his shoulders and in between the elbow creases. One hand resting on the knee gesturing the varada mudra, the other raised in front of the chest with thumb touching ring finger. The face slightly turned to his right with eyes closed, gently smiling lips. The raised urna is between two arched eyebrows, the hair flattened by a tiara encircling a two-tiered chignon with diamond finial.



399: TRIPOD CENSER

EUR 600 - 800

Longquan Kiln Celadon China , Ming Dynasty Dimensions: Height 21 cm Width 16 cm Depth 16 cm Weight: 1052 grams Tripod censer in celadon glaze on three feet with shapes of faces, the lid decorated with a prostrate lion.



400: STANDING BUDDHA

EUR 800 - 1,000

Bronze Tibet 18th century Dimensions: Height 26 cm Width 9 cm Depth 8 cm Weight: 1639 grams Standing Buddha on a high double reverse lotus flower, his posture slightly crooked to the right. He is dressed in a long robe with ornamental pattern. His right hand is facing the front with the palm, index finger and thumb touching, his left hand reaching in front with something clasped in his fist. He is smiling welcomingly with downcast eyes. The head and ushnisha are covered in curls, topped by diamond finial.



401: BOWL

EUR 100 - 200

Pottery China or Japan , 18th century or earlier Dimensions: Height 10 cm Width 12 cm Depth 12 cm Weight: 484 grams Bulbous bowl expanding to the top with fat lip and two small nooses on the top.



402: GANDHARA RELIEF

EUR 400 - 600

Schist Gandhara , 4th century Dimensions: Height 28 cm Wide 10 cm Depth 5 cm without base Weight: 1912 grams with base Relief attached to a metal base on plinth showing Buddha standing in flowy, wide robes and a scarf billowing around his shoulders and neck. His face is oval with small facial features, the earlobes elongated and hair done up in a bun. Three large feathers extend to the sky from behind the Buddha.



403: STANDING WARRIOR

EUR 400 - 600

Bronze China , 18th century Qing Dynasty Dimensions: Height 28 cm Width 12 cm Depth 7 cm Weight: 1828 grams Chinese warrior standing on a two-stepped base with feet wearing armored with decorative bands and belts. The warrior is leaning to one side gazing towards the horizon and holding something in both his hands. A scarf is billowing around his torso.

Fine International Art Sale No. 18



404: MANFRED GRÄNERT - NACKTE FRAU

EUR 300 - 400

Bleistiftzeichnung signiert: unten rechtes, Manfred Gränert 1948 Maße: 48 cm 34 cm



405: ZHANG ZHI WAN (1811-1897)

EUR 200 - 400

Paper China , 19th century Dimensions with frame: 205 x 60 cm Painting: 130 x 47 cm This spring mountain picture depicts the beautiful scenery of green mountains, peach blossoms, boats and thatched houses.



406: SILVER COIN 1 YUAN

EUR 10 - 30

Silver China, Republic of China (1912 - 1949) Dimensions: 0,3 cm Diameter 4 cm Weight: 26,40 gr Bust of Yuan Shikai facing left with Chinese idiograms above and written 'Year 3 of the Republic of China'. Reverse showing two Chinese characters '1 yuan' within wreath.



407: TEMPLEFRAGMENT DEPICTING ELEPHANT

EUR 400 - 600

Copper repousse gilt Tibet , 18th century Dimensions: Height 24 cm Wide 17 cm Depth 2 cm without base Weight: 1179 grams with base A rectangular, flat fragment in open-work depicting an elephant in the landscape, standing on rocky grounds and surrounded by leaves and trees. The elephant is wearing a saddle with a lotus flower upon which he is carrying three flaming jewels symbolizing the three refuges of the Buddhist - the Buddha, the Dharma and the Sangha. The elephant's head and tail are turned towards each other. The right side of the fragment shows ornamental flames.



408: KUNSTDRUCK , IRIS UND PAPIER

EUR 80 - 100

Kunstdruck des Künstlers Ahrweiler Reproduktion im Offsetdruck mit Blattgold belegt signiert: unten rechts , ahrweiler Maße: 60 cm x 46 cm



409: YELLOW JAMBHALA

EUR 300 - 500

Achat Nepal , 18th century Dimensions: Height 5 cm Wide 4 cm Depth 2,5 cm Weight: 31 grams The pot-bellied deity of wealth seated on a double-lotus pedestal, holding a mongoose in his left hand, his right holding a fruit, adorned with beaded jewelry and crowned with a tiara.



410: BLUE AND WHITE VASE

EUR 900 - 1,100

Porcelain China , Qing Dynasty Dimension: Height 43,5 cm Width 14 cm Depth 14 cm Weight: 3849 grams Long circular vase growing wider at the top, then slightly smaller at the neck which is decorated with leaves on the top. The blue-white painting shows a lively scene of a nobleman and his followers chasing after a rider on a horse in a rocky landscape.

Fine International Art Sale No. 18



411: DANCING SHIVA

EUR 300 - 400

Bronze India , 18th century Dimensions: Height 14 cm Wide 10 cm Depth 4 cm Weight: 392 grams This depiction of dancing Shiva is called Nataraja. He is standing on a lotus flower, one foot balancing on prostrate dwarf demon Apasmara symbolizing evil and ignorance. Shiva is dancing in a circle of fires emerging from the mouths of two makaras and his arms and one leg are hovering in the air in an elegant posture. His hair is flowing out in strands symbolizing the holy river Ganga. He is holding the fire agni representing the forces of creation and destruction, and a hand drum standing for rhythm and time. Despite his energetic cosmic dance his face is calm and friendly. The statue is hollow.



412: PRAYER WHEEL

EUR 300 - 500

Leather and metal Tibet , 18th century Dimensions: Height 30 cm , Diameter 11 cm Weight: 258 grams Handle made of wood with metal mount with repousse key fret design. The upper part of the wood handle is decorated with painted black band. The circular body is wrapped with leather fastened tight by a metal clamp with two stone settings and one noose with a string and pendant running through it. The top is decorated with a circular metal piece, the outer edge with alternating extensions representing one or three diamonds, enclosing an ornamental pattern, the center topped with a stupa-shaped finial.



413: TSA TSA BUDDHA

EUR 200 - 300

Clay Tibet , 12th century Dimensions: Height 11 cm Wide 5,5 cm Depth 2,5 cm Weight: 187 grams Tsa Tsas are small religious votive offerings placed at sacred spaces or carried as talisman. This one shows Buddha seated on a small base showing the bhumispharsa mudra and surrounded by a flaming aureole.



414: UNBEKANNTER MALER , 19. JH.

EUR 200 - 400

Öl auf Leinwand Größe: 74 cm x 58 cm Motiv: Portrait eines Bayerischen



415: VAJRACHARYA PRIEST'S CROWN

EUR 300 - 500

Copper repousse Nepal , 18th century Dimensions: Height 24 cm Wide 20 cm Depth 20 cm without base Weight: 495 grams Crown resembling the hairstyle of a Buddha with high chignon topped by five-pronged vajra. A tiara with five tathagatas in mandorlas encloses the high chignon.



416: CUP

EUR 400 - 600

Enamel painted Porcelain China , 19th century Qing Dynasty Dimension: Height 4,5 cm Width 6,5 cm Depth 6,5 cm Weight: 39 grams Porcelain cup with enamel painting on the outside with green bamboo sticks and leaves with pink flowers and a Chinese poem or saying.

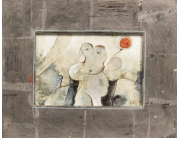


417: BOWL

EUR 100 - 200

Green Celadon China 12th century style Dimensions: Height 6 cm Diameter 16 cm Weight: 454 grams Ceramic ware of ochre colour, the inside smooth while the outside showing a petal or feather-shaped pattern.

Fine International Art Sale No. 18



418: HERBERT FINSTER (1930 - 2000)

EUR 600 - 800

signiert und datiert unten rechts: H. Finster (19) 85 Motiv: " Tanzendes Paar mit rotem Luftballon" MaßŸe: 20 cm x 14 cm



419: HEAD OF A SCULPTURE

EUR 400 - 600

Bronze Tibet , 13th century Dimensions: Height 10 cm Width 8 cm Depth 4 cm without base Weight: 362 grams with base Bronze Head attached to metal rod depicting a deity recognizable by the third eye on the forehead. The god has an oval face and is grinning widely with a long, slender nose, the eyes bulging. Two circular ear pendants are hanging down to the shoulders. The head is decorated with a tiara.



420: HEAD OF VISHNU

EUR 800 - 1,000

Sandstone Cambodia , Angkor Wat Dimensions: Height 18 cm Width 7 cm Depth 7 cm with base Weight: 765 grams with base Head of Vishnu with headdress distinctive for Cambodian style. The broad face is smiling and has a broader nose, attentive eyes and slightly elongated earlobes. Mounted on a black base.



421: JAPANESE BOWL

EUR 100 - 150

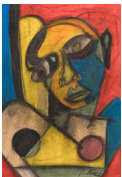
Bronze red lacquered Japan 19th century Meiji period (1868 - 1912) Dimensions: Height 13 cm Wide 18 cm Depth 18 cm Weight: 933 grams Bowl with foot, the body expanding to the top with heightened lip, decorated with relief of a celestial dragon.



422: SILVER STUPA

EUR 800 - 1,000

Silver Tibet 16th century Dimensions: Height 17 cm Width 7 cm Depth 7 cm Weight: 706 grams Archetypical stupa displaying the various levels, each with their own meaning. The top, for example, showing the jewel for enlightenment, then the sun for wisdom and the moon for the heart of awakening. Followed by thirteen discs representing the thirteen powers of Buddha.



423: PETER ROBERT KEIL (1942-)

EUR 300 - 400

Ä–I auf Leinwand , gerahmt Signiert unten rechts: P. Keil MaßŸe: 55 cm x 38 cm



424: RARE CHINESE BRONZE

EUR 600 - 800

Bronze China , 18th century Dimensions: Height 17 cm Wide 9 cm Depth 15 cm Weight: 1347 grams This bronze shows a rare depiction of a man with faun-like features sitting on the back of a mystical lion who is standing on a base with four splayed feet and a circular hole at the center. The lion is a classical foo dog with a cloud-shaped tail, a collar and bell around the neck, its mouth agape and bulging eyes. The rider is sitting on the back only wearing a short trouser or cloth and armlets, holding a vessel or vase in his hands. The person has a goat beard, a hook nose, bulging eyes and the hair is parting in the middle and curled to the sides.

Fine International Art Sale No. 18



425: GEORG WOLF (1882 - 1965)

EUR 100 - 150

Offset signiert unten rechts Größe: 24,5 x 18,5 cm Motiv: Hund



426: MONSTRANZ MIT ORIGINAL KISTE

EUR 1,000 - 1,200

Messik mit Versilberung in original Kiste Maße: Höhe 67 cm Breite 35 cm Tiefe 15 cm Gewicht: 4517 Gramm mit Kiste
